

SW-3, 28 NOV 2024 to 26 DEC 2024

SOCAL APP CON  
124.35 279.625  
KNZY ATIS \*  
317.8  
SAN-D-ATIS  
134.8

NOTE: Turbotojet aircraft only.  
NOTE: RADAR required.  
NOTE: When SAN arrivals are using Rwy 9, aircraft can expect to depart and re-enter the TCA southwest of PGY VORTAC.

TURBOJET VERTICAL NAVIGATION

PLANNING INFORMATION

TNP, EED and PKE transitions  
expect FL240 at SALTN  
expect 12000 at CARUL

OCEANSIDE  
115.3 OCN  
Chan 100

LOCALIZER  
I-SAN  
111.55  
Chan 52 (V)

MISSION BAY  
117.8 MZB  
Chan 125

LOCALIZER  
I-JBR  
110.9  
Chan 46

NEEDLES  
115.2 EED  
Chan 99

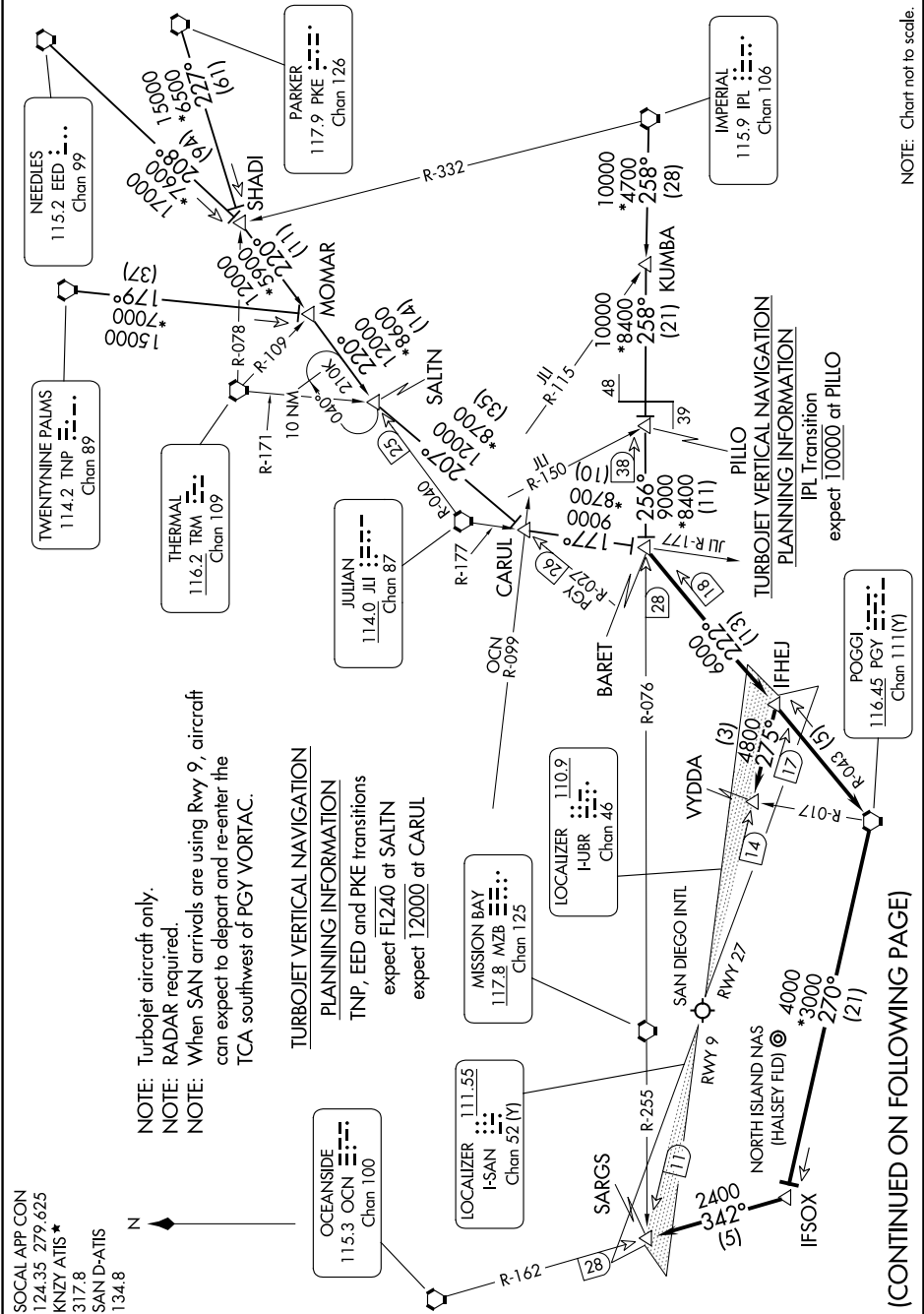
THERMAL  
116.2 TRM  
Chan 109

JULIAN  
114.0 JJI  
Chan 87

PARKER  
117.9 PKE  
Chan 126

IMPERIAL  
115.9 IPL  
Chan 106

POGGI  
116.45 PGI  
Chan 111(Y)



(CONTINUED ON FOLLOWING PAGE)

NOTE: Chart not to scale.

SW-3, 28 NOV 2024 to 26 DEC 2024