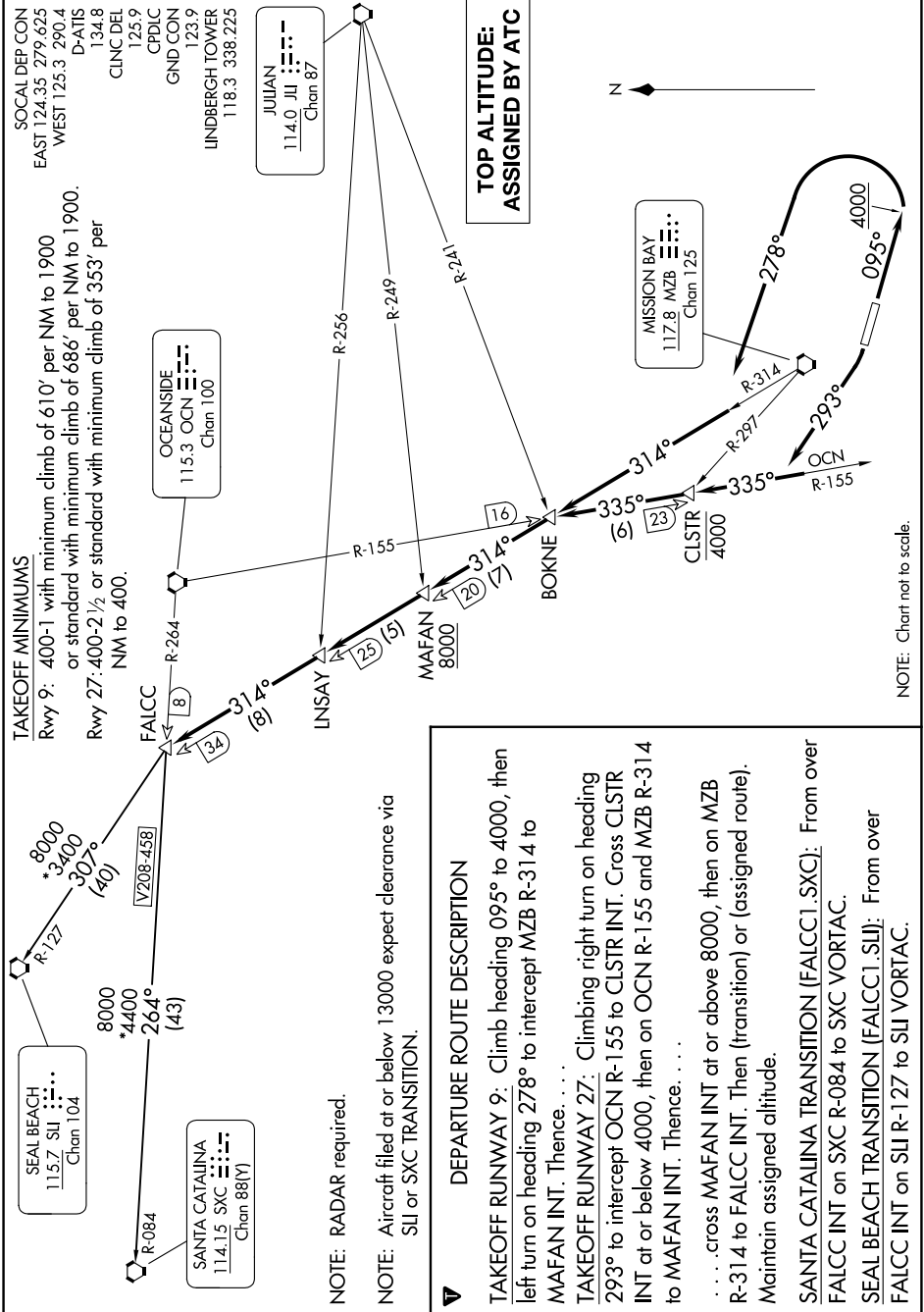


# FALCC ONE DEPARTURE

AL-373 (FAA)

SAN DIEGO INTL (SAN)  
SAN DIEGO, CALIFORNIA

SW-3, 28 NOV 2024 to 26 DEC 2024



SOCAL DEP CON  
EAST 124.35 279.625  
WEST 125.3 290.4  
D-ATIS  
134.8  
CLNC DEL  
125.9  
CPDIC  
GND CON  
123.9  
LINDBERGH TOWER  
118.3 338.225

JULIAN  
114.0 JII  
Chan 87

OCEANSIDE  
115.3 OCN  
Chan 100

MISSION BAY  
117.8 MZB  
Chan 125

**TOP ALTITUDE:  
ASSIGNED BY ATC**

NOTE: RADAR required.  
NOTE: Aircraft filed at or below 13000 expect clearance via  
SII or SXC TRANSITION.

**▼ DEPARTURE ROUTE DESCRIPTION**  
**TAKEOFF RUNWAY 9:** Climb heading 095° to 4000, then left turn on heading 278° to intercept MZB R-314 to MAFAN INT. Thence...  
**TAKEOFF RUNWAY 27:** Climbing right turn on heading 293° to intercept OCN R-155 to CLSTR INT. Cross CLSTR INT at or below 4000, then on OCN R-155 and MZB R-314 to MAFAN INT. Thence...  
 ... cross MAFAN INT at or above 8000, then on MZB R-314 to FALCC INT. Then (transition) or (assigned route). Maintain assigned altitude.  
**SANTA CATALINA TRANSITION (FALCC1.SXC):** From over FALCC INT on SXC R-084 to SXC VORTAC.  
**SEAL BEACH TRANSITION (FALCC1.SII):** From over FALCC INT on SII R-127 to SII VORTAC.

NOTE: Chart not to scale.

SW-3, 28 NOV 2024 to 26 DEC 2024

# FALCC ONE DEPARTURE