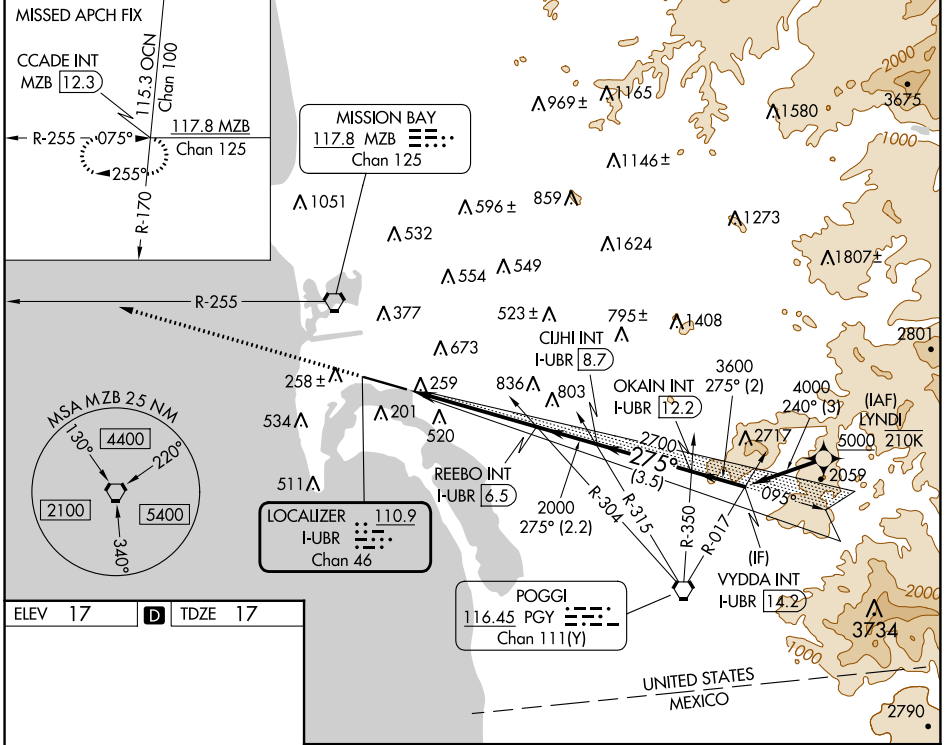


LOC/DME I-UBR <b>110.9</b> Chan <b>46</b>	APP CRS <b>275°</b>	Rwy Idg TDZE Apt Elev <b>7591</b> <b>17</b> <b>17</b>
-------------------------------------------------	------------------------	----------------------------------------------------------------------

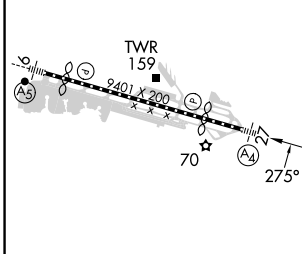
# LOC RWY 27

SAN DIEGO INTL (SAN)

From LYNDI: RNAV 1-DME/DME/IRU or GPS required.		MAIS ④	MISSED APPROACH: Climb to 2500 on heading 275° and on MZB VORTAC R-255 to CCADE INT/RMZB 12.3 DME and hold.		
RNAV 1-DME/DME/IRU or GPS required for procedure entry.					
<p>▼ Rwy 27 helicopter visibility reduction below 1 SM NA. Circling NA north of Rwy 9-27. Inop table does not apply to Cats A and B. For inop ALS, increase S-27 Cats C and D visibility to 1/8 SM.</p>					
D-ATIS <b>134.8</b>	SOCAL APP CON <b>119.6 363.1 (WEST)</b> <b>124.35 279.625 (EAST)</b>	LINDBERGH TOWER <b>118.3 338.225</b>	GND CON <b>123.9</b>	CLNC DEL <b>125.9</b>	CPDLC



ELEV 17	D	TDZE 17
---------	---	---------



TDZ/CL Rwy 9 and 27  
HIRL Rwy 9-27

FAF to MAP 5.2 NM

Knots	60	90	120	150	180
Min:Sec	5:12	3:28	2:36	2:05	1:44

CIRCLING

2500	MZB R-255	CCADE INT	OKAIN INT I-UBR 12.2	VYDDA INT I-UBR 14.2
hdg 275°				
	REEBO INT I-UBR 6.5	CJHI INT I-UBR 8.7		
	I-UBR 1.3		2700	4000
	≤ 3.50% TCH 65		3600	
	5.2 NM	2.2 NM	3.5 NM	2 NM
CATEGORY	A	B	C	D
S-27	680-1	663 (700-1)	680-1¾	663 (700-1¾)
<input checked="" type="checkbox"/> CIRCLING	820-1	803 (900-1)	840-2½	940-3
			823 (900-2½)	923 (1000-3)

SW-3, 28 NOV 2024 to 26 DEC 2024

SW-3, 28 NOV 2024 to 26 DEC 2024