

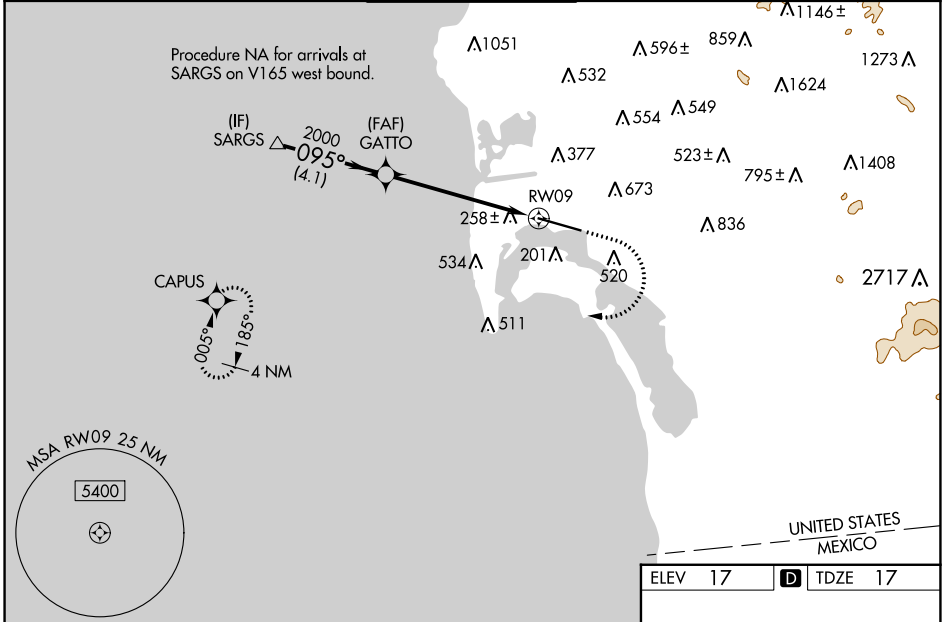
WAAS CH 49237 W09A	APP CRS 095°	Rwy Idg 7280 TDZE 17 Apt Elev 17
--	------------------------	---

RNAV (GPS) RWY 9

SAN DIEGO INTL (SAN)

RNP APCH.	<p>⚠ Circling NA north of Rwy 9-27. For uncompensated Baro-VNAV systems, LNAV/VNAV NA below 6°C or above 47°C. When Circling to Rwy 27 at night, operational VGSI required, remain on or above VGSI glidepath until threshold. Rwy 9 helicopter visibility reduction below RVR 4000 NA. Inop table does not apply to LPV all Cats. For inop ALS, increase LNAV Cats A/B visibility to RVR 5500.</p>	MALS R	MISSED APPROACH: Climb to 2000 then climbing right turn to 3000 direct CAPUS and hold.
-----------	--	--------	--

D-ATIS 134.8	SOCAL APP CON 119.6 363.1 (WEST) 124.35 279.625 (EAST)	LINDBERGH TOWER 118.3 338.225	GND CON 123.9	CLNC DEL 125.9	CPDLC
------------------------	--	---	-------------------------	--------------------------	-------



VGSI and RNAV glidepath not coincident (VGSI Angle 3.30/TCH 76). SARGS \rightarrow 2100 \rightarrow 095° \rightarrow 2000 \rightarrow GATTO \star \rightarrow 2000 \rightarrow RWY09 \rightarrow 70 GP 3.10° TCH 55 *1.6 NM to RWY09 *LNAV only. CAPUS \star																													
<table border="1"> <tr> <td>ELEV 17</td> <td>TDZE 17</td> </tr> </table>	ELEV 17	TDZE 17																											
ELEV 17	TDZE 17																												
<table border="1"> <thead> <tr> <th>CATEGORY</th> <th>A</th> <th>B</th> <th>C</th> <th>D</th> </tr> </thead> <tbody> <tr> <td>LPV DA</td> <td></td> <td>262/40</td> <td>245 (300-¾)</td> <td></td> </tr> <tr> <td>LNAV/VNAV DA</td> <td></td> <td>621-1½</td> <td>604 (700-1½)</td> <td></td> </tr> <tr> <td>LNAV MDA</td> <td>600/40</td> <td>583 (600-¾)</td> <td>600-1¼</td> <td>583 (600-1¼)</td> </tr> <tr> <td>CIRCLING</td> <td>800-1 783 (800-1)</td> <td>820-1 803 (900-1)</td> <td>820-2¼ 803 (900-2¼)</td> <td>940-3 923 (1000-3)</td> </tr> </tbody> </table>	CATEGORY	A	B	C	D	LPV DA		262/40	245 (300-¾)		LNAV/VNAV DA		621-1½	604 (700-1½)		LNAV MDA	600/40	583 (600-¾)	600-1¼	583 (600-1¼)	CIRCLING	800-1 783 (800-1)	820-1 803 (900-1)	820-2¼ 803 (900-2¼)	940-3 923 (1000-3)	TDZ/CL Rwys 9 and 27 HIRL Rwy 9-27			
CATEGORY	A	B	C	D																									
LPV DA		262/40	245 (300-¾)																										
LNAV/VNAV DA		621-1½	604 (700-1½)																										
LNAV MDA	600/40	583 (600-¾)	600-1¼	583 (600-1¼)																									
CIRCLING	800-1 783 (800-1)	820-1 803 (900-1)	820-2¼ 803 (900-2¼)	940-3 923 (1000-3)																									

SW-3, 28 NOV 2024 to 26 DEC 2024

SW-3, 28 NOV 2024 to 26 DEC 2024