

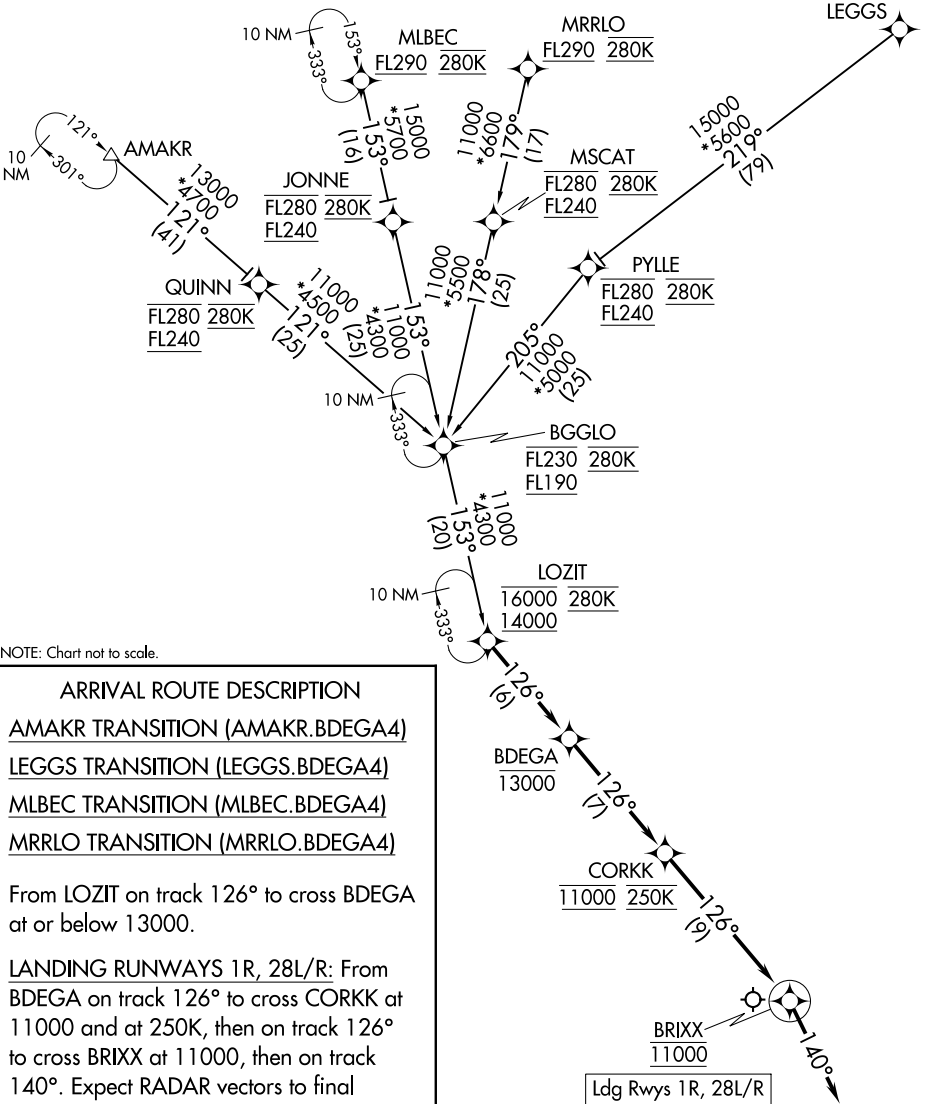
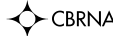
# BDEGA FOUR ARRIVAL (RNAV)

AL-375 (FAA)

SAN FRANCISCO INTL (SFO)  
SAN FRANCISCO, CALIFORNIA

OAKLAND CENTER  
125.85 323.0  
NORCAL APP CON  
133.95 317.6  
D-ATIS  
113.7 115.8 118.85  
GND CON  
121.8  
SAN FRANCISCO TOWER  
120.5 269.1

RNAV 1 - DME/DME/IRU or GPS.  
RADAR required.



SW-2, 28 NOV 2024 to 26 DEC 2024

SW-2, 28 NOV 2024 to 26 DEC 2024

NOTE: Chart not to scale.

### ARRIVAL ROUTE DESCRIPTION

AMAKR TRANSITION (AMAKR.BDEGA4)

LEGGS TRANSITION (LEGGS.BDEGA4)

MLBEC TRANSITION (MLBEC.BDEGA4)

MRRLO TRANSITION (MRRLO.BDEGA4)

From LOZIT on track 126° to cross BDEGA at or below 13000.

LANDING RUNWAYS 1R, 28L/R: From BDEGA on track 126° to cross CORKK at 11000 and at 250K, then on track 126° to cross BRIXX at 11000, then on track 140°. Expect RADAR vectors to final approach course.

Ldg Rwys 1R, 28L/R

# BDEGA FOUR ARRIVAL (RNAV)