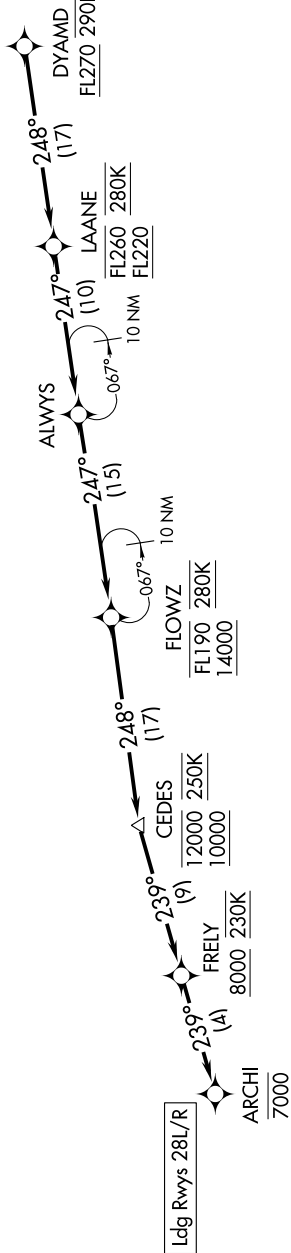


DYAMD FIVE ARRIVAL (RNAV)

Arrival Routes

SAN FRANCISCO, CALIFORNIA

OAKLAND CENTER
 134.37 281.5
 NORCAL APP CON
 128.325 254.3
 D-ATIS
 113.7 115.8 118.85
 SAN FRANCISCO TOWER
 120.5 269.1
 GND CON
 121.8



ARRIVAL ROUTE DESCRIPTION

From DYAMD on track 248° to cross LAANE between FL220 and FL260 and at 280K, then on track 247° to ALWAYS.

LANDING RUNWAYS 28L/R: From ALWAYS on track 247° to cross FLOWZ between 14000 and FL190 and at 280K, then on track 248° to cross CEDES between 10000 and 12000 and at 250K, then on track 239° to cross FRELY at or above 8000 and at 230K, then on track 239° to cross ARCHI at 7000. Expect assigned instrument approach procedure.

- NOTE: RNAV 1.
- NOTE: DME/DME/IRU or GPS required.
- NOTE: Expect to receive "descend via" clearance from Oakland Center. Northern California TRACON will assign landing runway.
- NOTE: RADAR required for non-GPS equipped aircraft.

NOTE: Chart not to scale.

DYAMD FIVE ARRIVAL (RNAV)

Arrival Routes