

WAAS CH 57945 W19D	APP CRS 194°	Rwy Idg TDZE Apt Elev	7650 11 13
--	------------------------	-----------------------------	---------------------------------------

RNAV (GPS) Z RWY 19R

SAN FRANCISCO INTL (SFO)

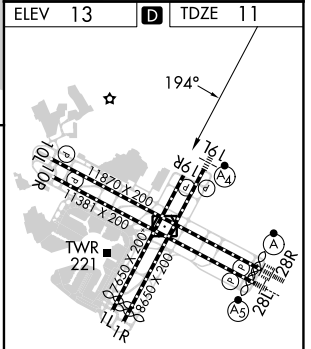
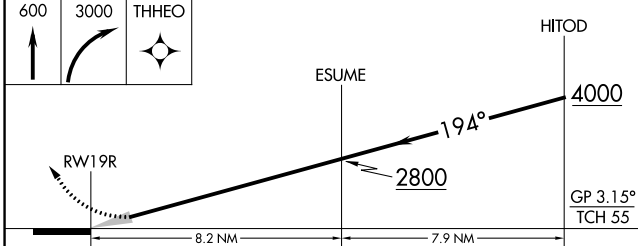
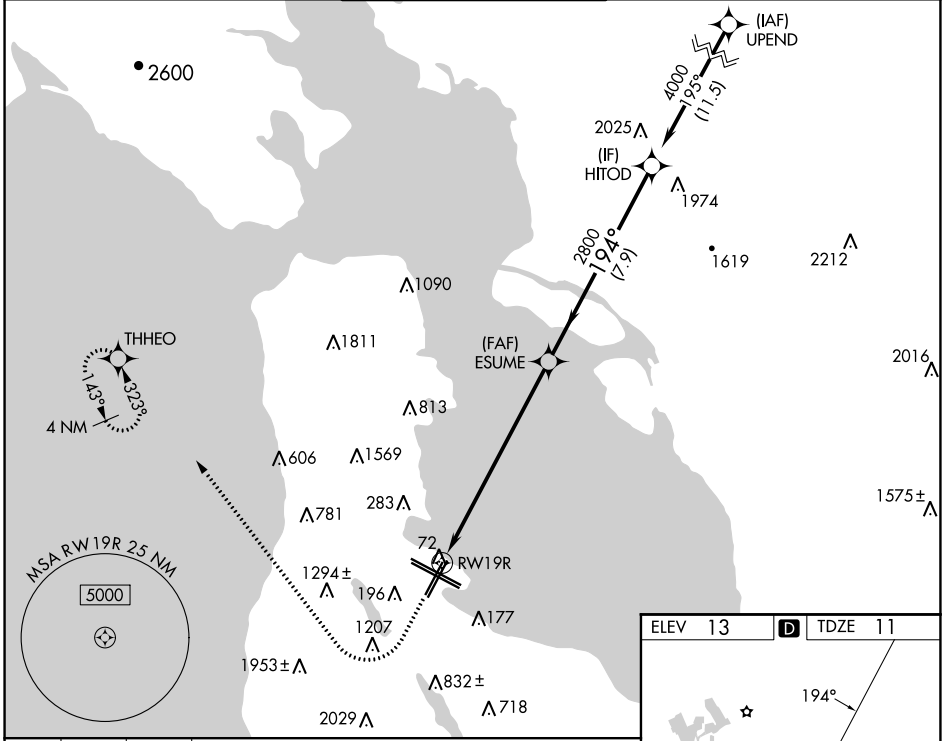
RNP APCH - GPS.

Simultaneous approach authorized. Simultaneous operations require use of vertical guidance; maintain last assigned altitude until established on glidepath. For uncompensated Baro-VNAV systems, LNAV/VNAV NA below 4°C or above 54°C. Simultaneous approach NA below 12°C (52°F).

MISSED APPROACH: Climb to 600 then climbing right turn to 3000 direct THHEO and hold.

*Missed approach requires minimum climb of 395 feet per NM to 2100; if unable to meet climb gradient, see RNAV (GPS) Y RWY 19R.

D-ATIS 113.7 115.8 118.85	NORCAL APP CON 134.5 338.2	SAN FRANCISCO TOWER 120.5 269.1	GND CON 121.8	CLNC DEL 118.2	CPDLC
---	--------------------------------------	---	-------------------------	--------------------------	-------



CATEGORY	A	B	C	D
LPV DA*		317/45	306 (400-7/8)	
LNAV/VNAV DA*		328/45	317 (400-7/8)	

GP 3.15°
TCH 55

TDZ/CL Rwys 19L and 28R
REIL Rwys 1L, 1R and 10L
HIRL all Rwys

SW-2, 28 NOV 2024 to 26 DEC 2024

SW-2, 28 NOV 2024 to 26 DEC 2024