

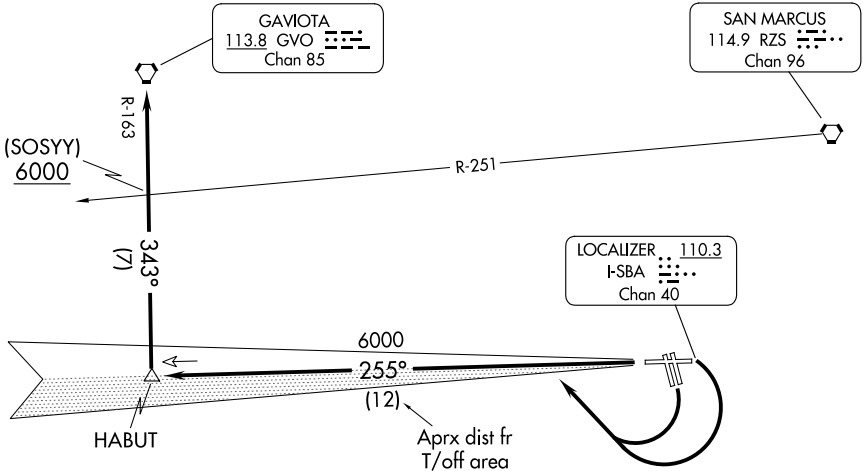
(HABUT4.GVO) 24025

# HABUT FOUR DEPARTURE

AL-378 (FAA)

SANTA BARBARA MUNI (SBA)  
SANTA BARBARA, CALIFORNIA

ATIS  
132.65  
CLNC DEL  
132.9  
GND CON  
121.7  
SANTA BARBARA TOWER ★  
119.7 (CTAF) 254.35  
SANTA BARBARA DEP CON  
120.55 319.15



SW-3, 28 NOV 2024 to 26 DEC 2024

SW-3, 28 NOV 2024 to 26 DEC 2024

NOTE: IFR departure Rwy 33L/R not authorized.

NOTE: Minimum (ATC) climb of 385' per NM to 6000.

NOTE: Chart not to scale.



## DEPARTURE ROUTE DESCRIPTION

TAKEOFF RUNWAYS 7 and 15L/R: Turn right, intercept I-SBA west course to HABUT INT, thence via GVO R-163 to GVO VORTAC. Cross RZS R-251 at or above 6000'.

TAKEOFF RUNWAY 25: Intercept I-SBA west course to HABUT INT, thence via GVO R-163 to GVO VORTAC. Cross RZS R-251 at or above 6000'.

HABUT FOUR DEPARTURE  
(HABUT4.GVO) 04SEP03

SANTA BARBARA, CALIFORNIA  
SANTA BARBARA MUNI (SBA)