

SIOUX FALLS, SOUTH DAKOTA

# HI-ILS or LOC RWY 21

LOC I-JOU <b>111.1</b>	APCH CRS <b>210°</b>	Rwy ldg <b>8999</b> TDZE <b>1430</b> Arprt Elev <b>1430</b>
---------------------------	-------------------------	---

AL-396 [USAF]

JOE FOSS FLD (KFSD)

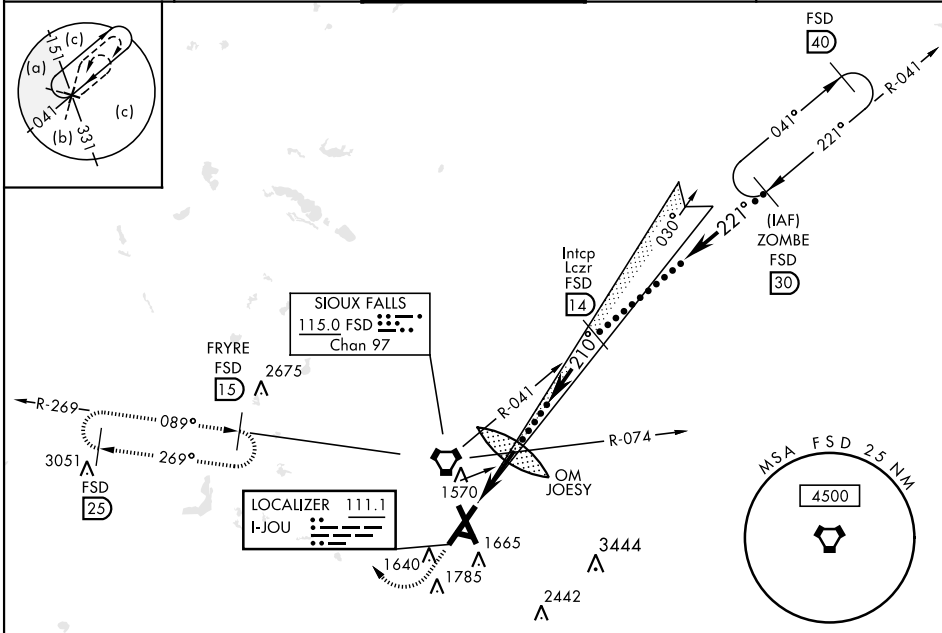
DME required. RADAR required for procedure entry.



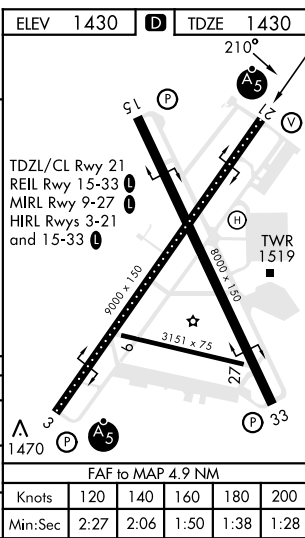
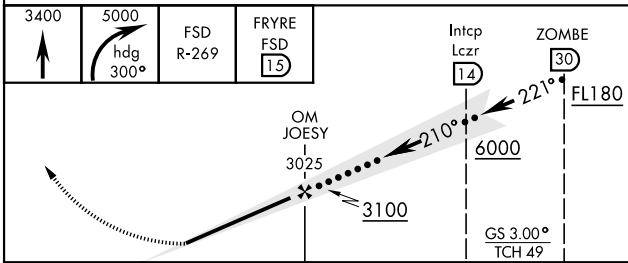
MISSED APPROACH: Climb to 3400 then climbing right turn to 5000 on heading 300° and FSD R-269 to FRYRE 15 DME and hold.

When ALS inop, increase RVR to 40 and vis to 3/4 miles.  
When ALS inop, increase CAT CDE vis to 1 1/8 miles.

ATIS <b>126.6</b>	SIOUX FALLS APP CON <b>125.8 306.2</b>	SIOUX FALLS TOWER ★ <b>118.3(CTAF) 257.8</b>	GND CON <b>121.9 348.6</b>	ASR
----------------------	---	---	-------------------------------	-----



EMERG SAFE ALT 100 NM 4600



SIOUX FALLS, SOUTH DAKOTA

43° 35' N - 96° 45' W

JOE FOSS FLD (KFSD)

Amdt 6C 04NOV21

# HI-ILS or LOC RWY 21

NC-1, 28 NOV 2024 to 26 DEC 2024

NC-1, 28 NOV 2024 to 26 DEC 2024