

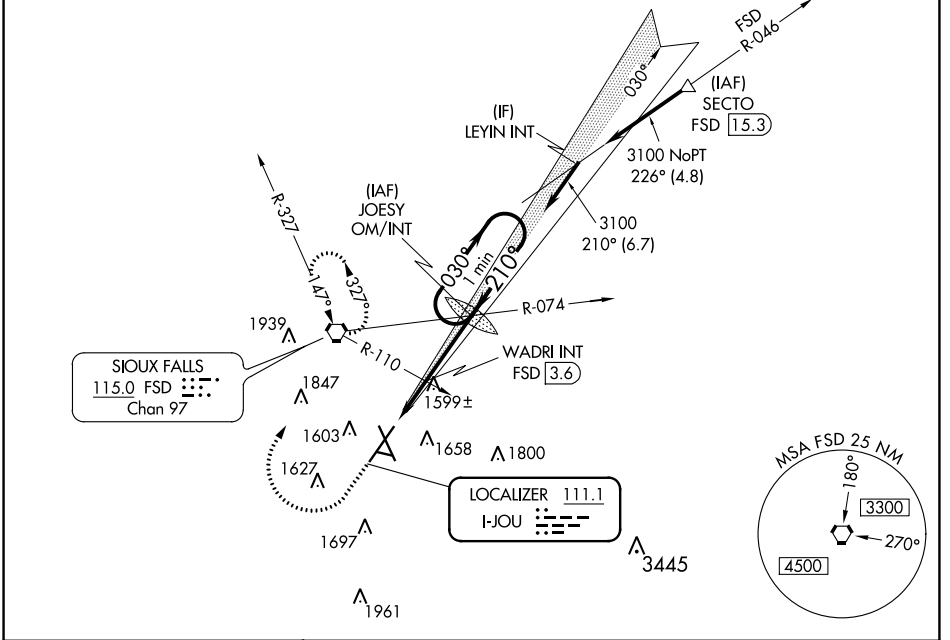
LOC I-JOU 111.1	APP CRS 210°	Rwy Idg 8999 TDZE 1430 Apt Elev 1430
---------------------------	------------------------	---

ILS or LOC RWY 21

JOE FOSS FLD (FSD)

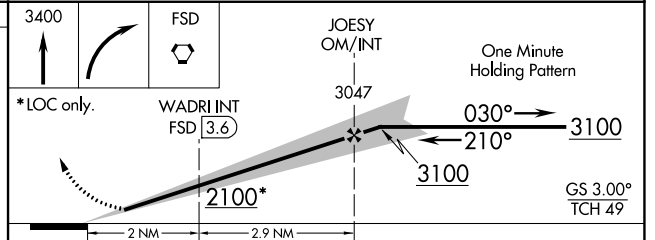
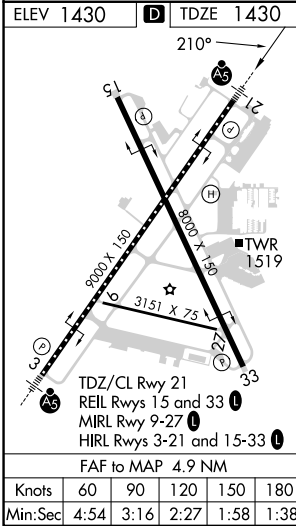
 	For inoperative MALSRS increase S-ILS all Cats visibility to 3/4 mile, increase S-LOC 21 Cat C/D visibility to 1 1/8 mile. When using WADRI FIX minimums, increase S-LOC 21 Cat C/D visibility to 1 mile.		 MISSED APPROACH: Climb to 3400 then right turn direct FSD VORTAC and hold.
	ATIS 126.6		UNICOM 122.95

SIoux FALLS APP CON * 125.8 306.2	SIoux FALLS TOWER * 118.3 (CTAF) 0 257.8	GND CON 121.9 348.6
---	--	-------------------------------



NC-1, 28 NOV 2024 to 26 DEC 2024

NC-1, 28 NOV 2024 to 26 DEC 2024



CATEGORY	A	B	C	D
S-ILS 21	1630/18 200 (200-1/2)			
S-LOC 21	2100/24	670 (700-1/2)	2100-1 1/2	670 (700-1 1/2)
C CIRCLING	2100-1	670 (700-1)	2100-1 3/4	2200-2 1/2
WADRI FIX MINIMUMS				
S-LOC 21	1800/24	370 (400-1/2)	1800/35	370 (400-3/8)
C CIRCLING	1960-1	1980-1	2060-1 3/4	2200-2 1/2
	530 (600-1)	550 (600-1)	630 (700-1 3/4)	770 (800-2 1/2)