

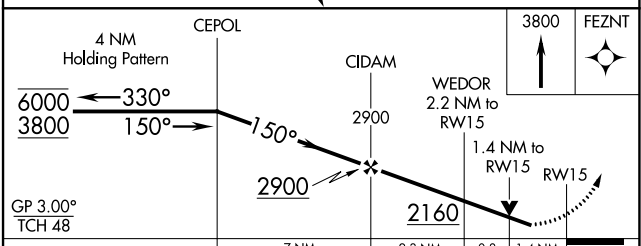
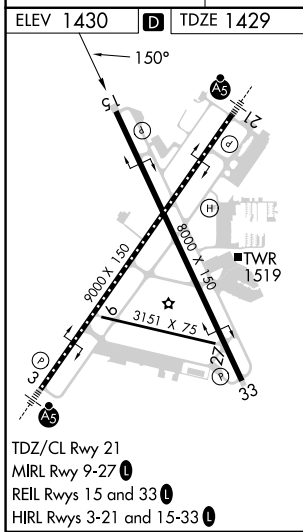
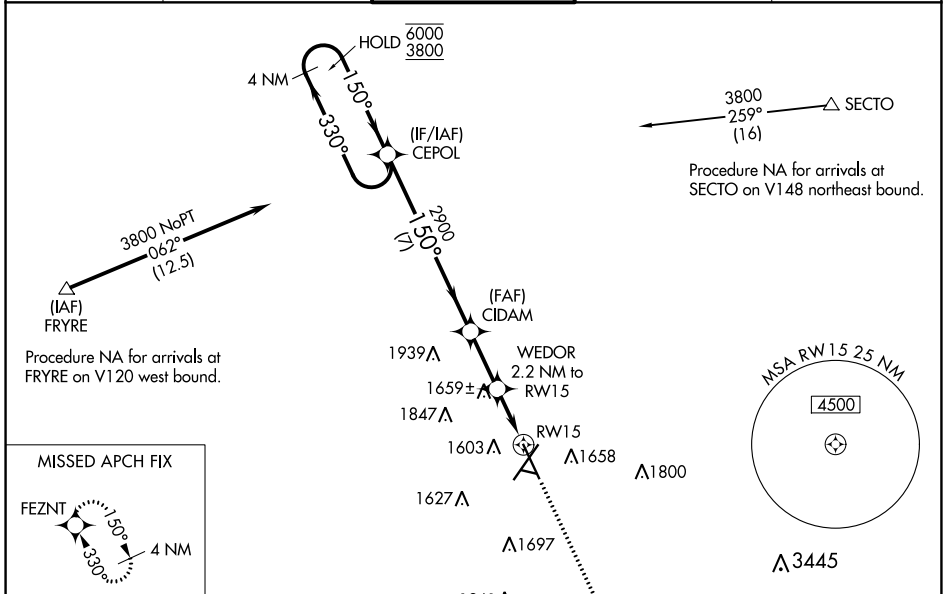
WAAS CH 90235 W15A	APP CRS 150°	Rwy Idg TDZE Apt Elev	8000 1429 1430
--	------------------------	-----------------------------	---

RNAV (GPS) RWY 15

JOE FOSS FLD (FSD)

RNP APCH-GPS.		MISSED APPROACH: Climb to 3800 direct FEZNT and hold.
<p>ASR Rwy 15 helicopter visibility reduction below 3/4 SM NA. For uncompensated Baro-VNAV systems, LNAV/VNAV NA below -21°C or above 54°C.</p> <p>ASR -31°C</p>		

ATIS 126.6	SIoux FALLS APP CON* 125.8 306.2	SIoux FALLS TOWER* 118.3 (CTAF) 257.8	GND CON 121.9 348.6	UNICOM 122.95
----------------------	--	--	-------------------------------	-------------------------



CATEGORY	A	B	C	D
LPV DA	1839-1 1/8		410 (500-1 1/8)	
LNAV/VNAV DA	1909-1 3/8		480 (500-1 3/8)	
LNAV MDA	1920-1 491 (500-1)		1920-1 3/8 491 (500-1 3/8)	
C CIRCLING	1960-1 530 (600-1)	1980-1 550 (600-1)	2060-1 3/4 630 (700-1 3/4)	2200-2 1/2 770 (800-2 1/2)

NC-1, 28 NOV 2024 to 26 DEC 2024

NC-1, 28 NOV 2024 to 26 DEC 2024