

WAAS CH <b>40135</b> <b>W33A</b>	APP CRS <b>330°</b>	Rwy Idg TDZE <b>1424</b> Apt Elev <b>1430</b>	<b>8000</b>
--	------------------------	---	-------------

# RNAV (GPS) RWY 33

JOE FOSS FLD (F'SD)

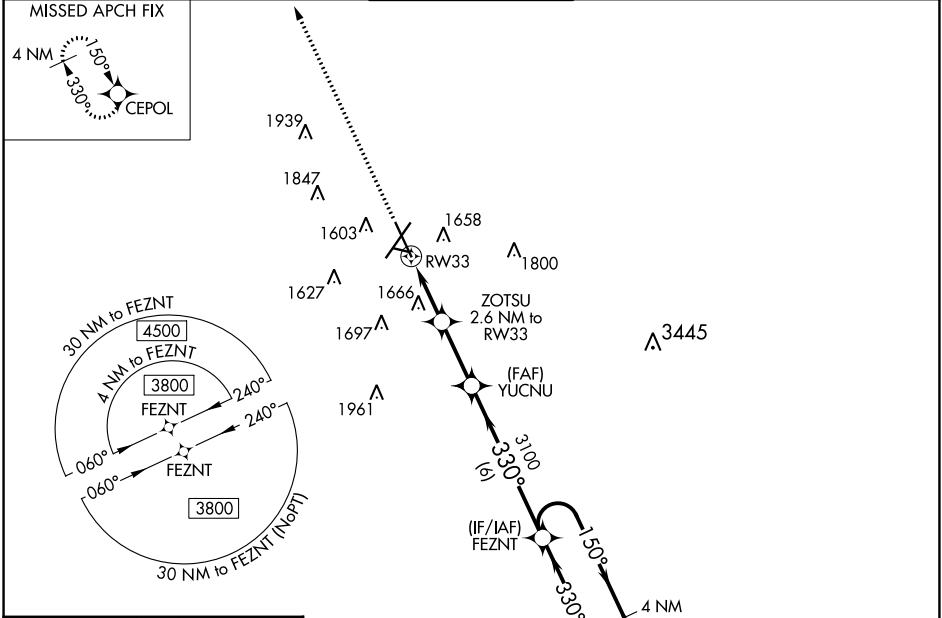
RNP APCH-GPS.

**⚠** Rwy 33 helicopter visibility reduction below 3/4 SM NA. For uncompensated Baro-VNAV systems, procedure NA below -22°C or above 54°C.

**ASR** -31°C

MISSED APPROACH:  
Climb to 3800 direct  
CEPOL and hold.

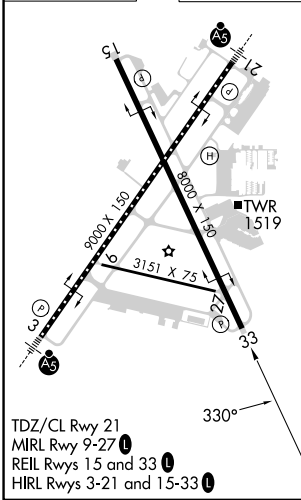
ATIS <b>126.6</b>	SIoux FALLS APP CON* <b>125.8 306.2</b>	SIoux FALLS TOWER* <b>118.3(CTAF) 257.8</b>	GND CON <b>121.9 348.6</b>	UNICOM <b>122.95</b>
----------------------	--	--	-------------------------------	-------------------------



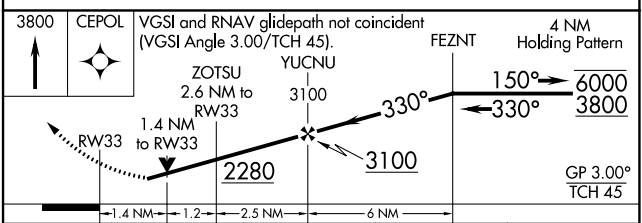
NC-1, 28 NOV 2024 to 26 DEC 2024

NC-1, 28 NOV 2024 to 26 DEC 2024

ELEV 1430 **D** TDZE 1424



TDZ/CL Rwy 21  
MIRL Rwy 9-27  
REIL Rwys 15 and 33  
HIRL Rwys 3-21 and 15-33



CATEGORY	A	B	C	D
LPV DA		1729-7/8	305 (300-7/8)	
LNAV/VNAV DA		1974-1 1/8	550 (600-1 1/8)	
LNAV MDA	1920-1	496 (500-1)	1920-1 3/8	496 (500-1 3/8)
<b>C</b> CIRCLING	1960-1 530 (600-1)	1980-1 550 (600-1)	2060-1 3/4 630 (700-1 3/4)	2200-2 1/2 770 (800-2 1/2)