

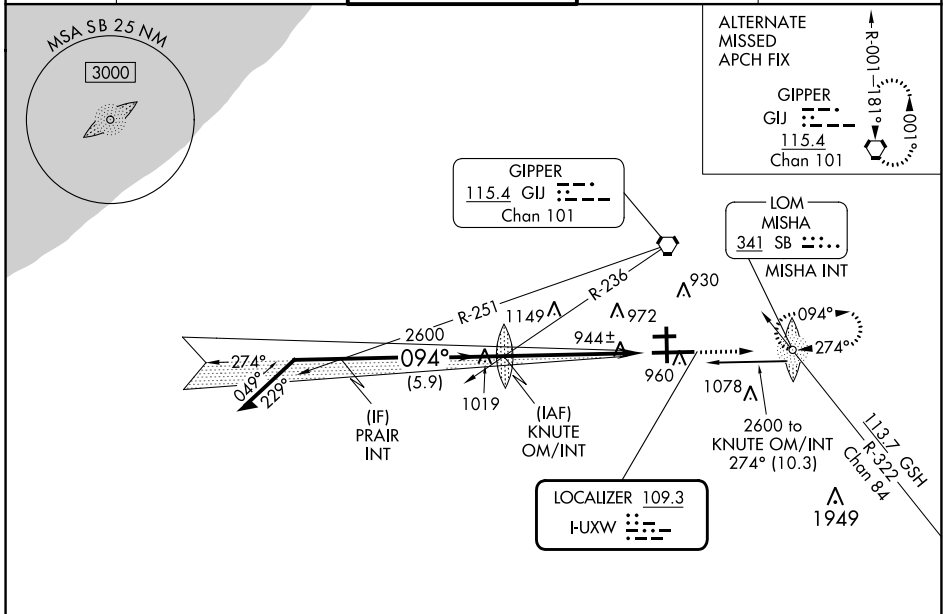
LOC I-UXW <b>109.3</b>	APP CRS <b>094°</b>	Rwy Idg <b>8412</b> TDZE <b>790</b> Apt Elev <b>798</b>
---------------------------	------------------------	---

# ILS or LOC RWY 9R

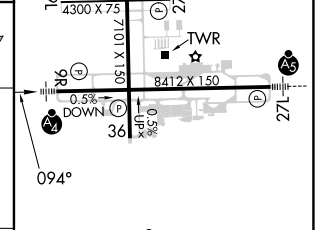
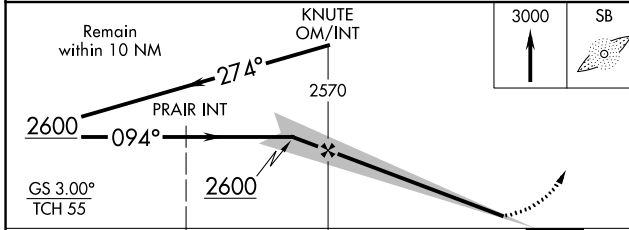
SOUTH BEND INTL (SBN)

ADF required. ▼ Rwy 9R helicopter visibility reduction below 3/4 SM NA. ▲ For inop ALS, increase S-ILS 9R visibility all Cats to RVR 5500, increase S-LOC 9R Cats C/D visibility to RVR 6000. Circling Rwy 27R NA at night.	MALSF 	MISSED APPROACH: Climb to 3000 direct MISHA LOM/INT and hold, continue climb-in-hold to 3000.
---	-----------	---

ATIS <b>120.675</b>	SOUTH BEND APP CON* <b>118.55 257.8</b>	SOUTH BEND TOWER* <b>135.675 (CTAF) 257.8</b>	GND CON <b>121.7</b>	CLNC DEL <b>121.9</b>
------------------------	--	--	-------------------------	--------------------------



ELEV 798	TDZE 790
----------	----------



CATEGORY	A	B	C	D	
S-ILS 9R	1135/40 345 (400-3/4)				
S-LOC 9R	1200/40	410 (500-3/4)	1200/50	410 (500-1)	
CIRCLING	1280-1 482 (500-1)		1440-1 3/4 642 (700-1 3/4)	1500-2 1/4 702 (800-2 1/4)	
FAF to MAP 5.3 NM					
Knots	60	90	120	150	180
Min:Sec	5:18	3:32	2:39	2:07	1:46