

WAAS CH <b>50108</b> <b>W27A</b>	APP CRS <b>274°</b>	Rwy Idg TDZE <b>774</b> Apt Elev <b>798</b>
--	------------------------	---

# RNAV (GPS) RWY 27L

SOUTH BEND INTL (SBN)

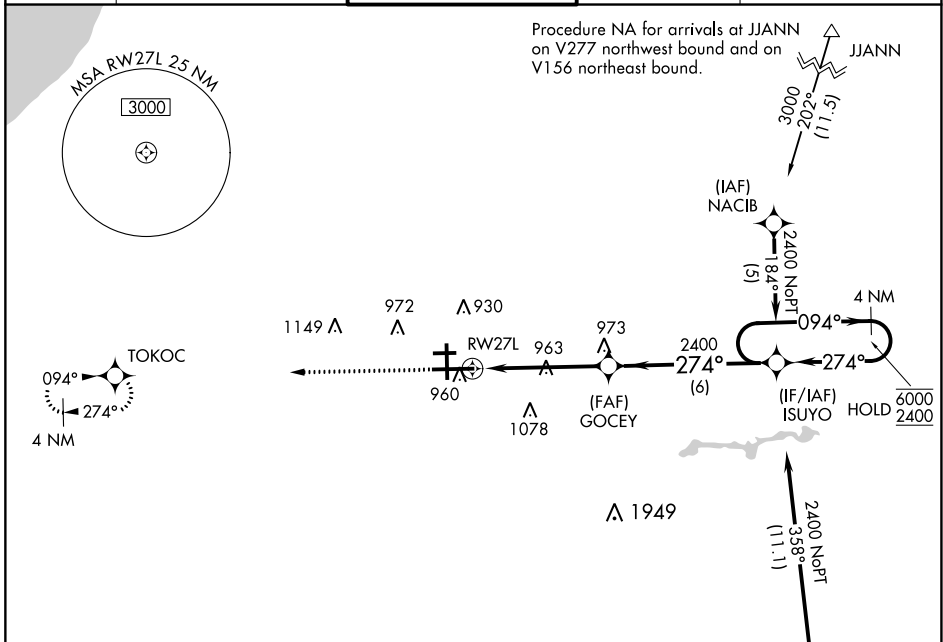
RNP APCH - GPS

**⚠** For uncompensated Baro-VNAV systems, LNAV/VNAV NA below -19°C or above 54°C. For inop ALS, increase LNAV Cat C/D visibility to 1½ SM. Circling Rwy 27R NA at night.

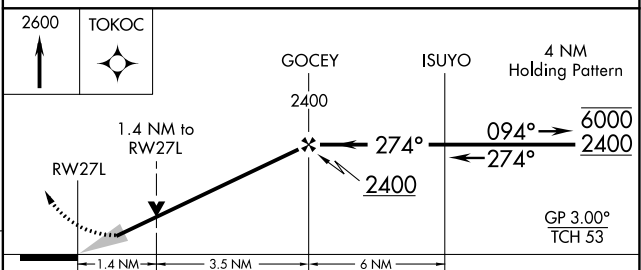
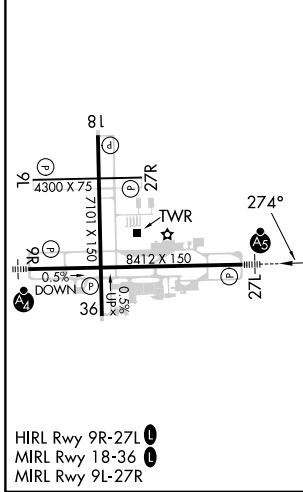


MISSED APPROACH: Climb to 2600 direct TOKOC and hold.

ATIS <b>120.675</b>	SOUTH BEND APP CON* <b>118.55 257.8</b>	SOUTH BEND TOWER* <b>135.675 (CTAF) 0 257.8</b>	GND CON <b>121.7</b>	CLNC DEL <b>121.9</b>
------------------------	--	--	-------------------------	--------------------------



ELEV <b>798</b>	<b>D</b>	TDZE <b>774</b>
-----------------	----------	-----------------



CATEGORY	A	B	C	D
LPV DA		1030/24	256 (300-½)	
LNAV/VNAV DA		1160/40	386 (400-¾)	
LNAV MDA	1260/24	486 (500-½)	1260/50	486 (500-1)
<b>C</b> CIRCLING	1280-1	482 (500-1)	1440-1¾ 642 (700-1¼)	1500-2¼ 702 (800-2¼)

EC-2, 28 NOV 2024 to 26 DEC 2024

EC-2, 28 NOV 2024 to 26 DEC 2024