

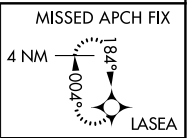
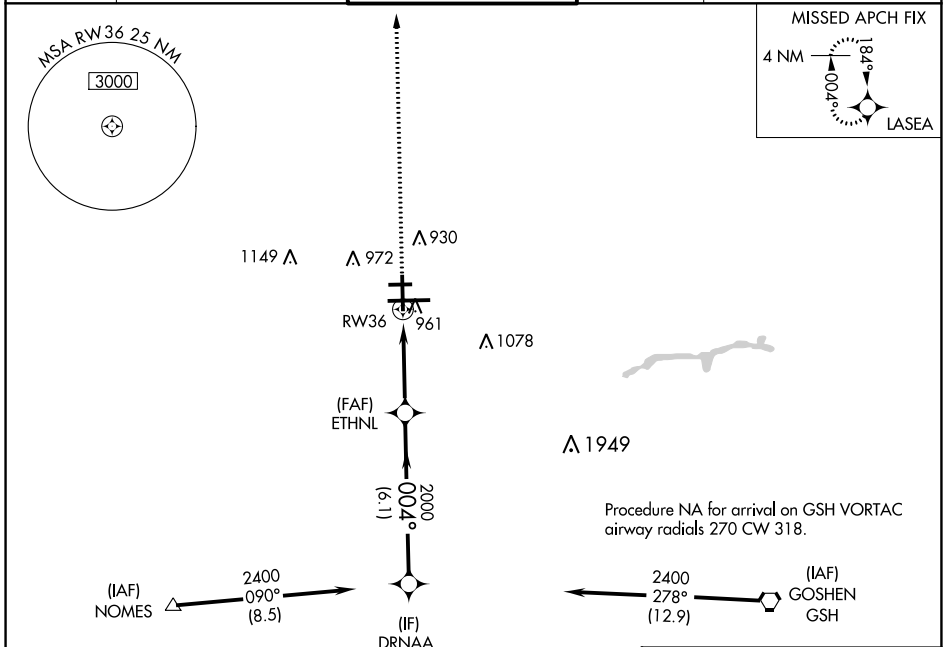
WAAS CH 69514 W36A	APP CRS 004°	Rwy Idg 7101 TDZE 778 Apt Elev 798
--	------------------------	---

RNAV (GPS) RWY 36

SOUTH BEND INTL (SBN)

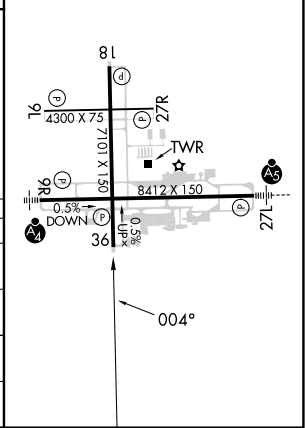
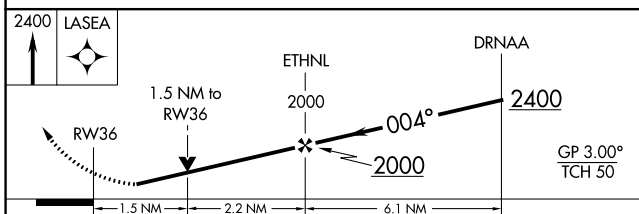
RNP APCH - GPS.		MISSED APPROACH: Climb to 2400 direct LASEA and hold.	
<p>▼ Circling Rwy 27R NA at night. Rwy 36 helicopter visibility reduction below 3/4 SM NA. ▲ For uncompensated Baro-VNAV systems, LNAV/VNAV NA below -22°C or above 54°C.</p>			

ATIS 120.675	SOUTH BEND APP CON * 118.55 257.8	SOUTH BEND TOWER * 135.675 (CTAF) 0 257.8	GND CON 121.7	CLNC DEL 121.9
------------------------	---	---	-------------------------	--------------------------



ELEV 798	D	TDZE 778
----------	----------	----------

HIRL Rwy 9R-27L **1**
MIRL Rwy 18-36 **1**
MIRL Rwy 9L-27R **1**



CATEGORY	A	B	C	D
LPV DA		1051-7/8	273 (300-7/8)	
LNAV/DA		1230-13/8	452 (500-13/8)	
LNAV MDA	1280-1	502 (500-1)	1280-13/8	502 (500-13/8)
C CIRCLING	1280-1	482 (500-1)	1440-13/4 642 (700-13/4)	1500-21/4 702 (800-21/4)

EC-2, 28 NOV 2024 to 26 DEC 2024

EC-2, 28 NOV 2024 to 26 DEC 2024