

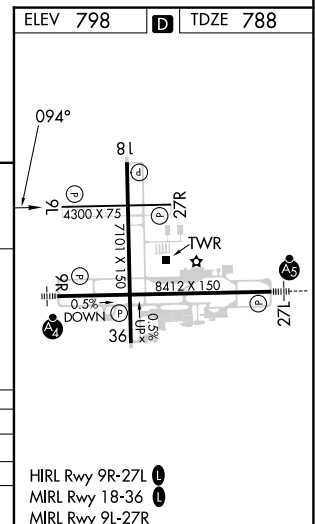
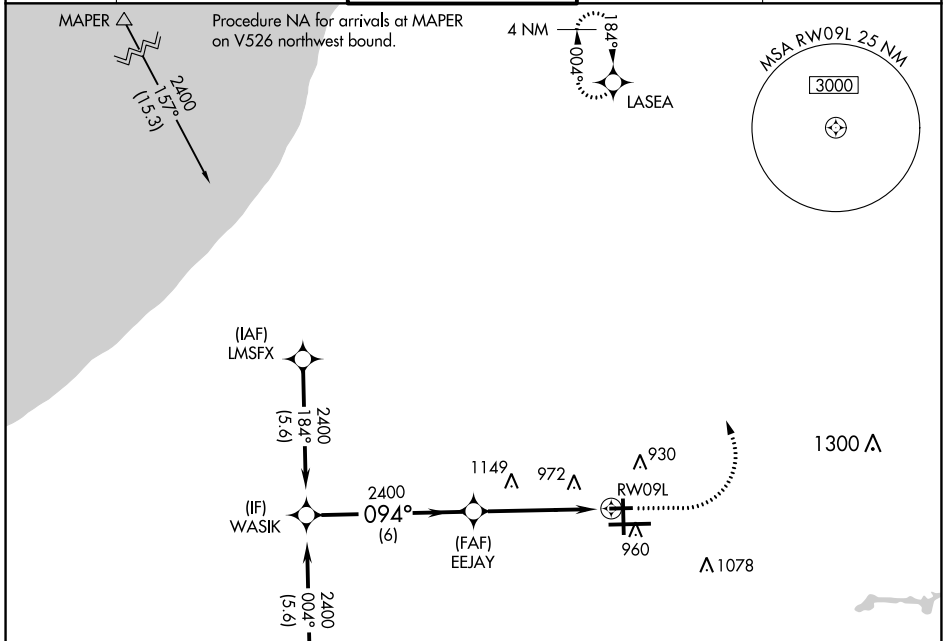
WAAS CH <b>70542</b> <b>W09A</b>	APP CRS <b>094°</b>	Rwy Idg TDZE <b>788</b> Apt Elev <b>798</b>	<b>4300</b> <b>788</b> <b>798</b>
--	------------------------	---	---

# RNAV (GPS) RWY 9L

SOUTH BEND INTL (SBN)

RNP APCH - GPS.	MISSED APPROACH: Climb to 2000 then climbing left turn to 2400 direct LASEA and hold.
Rwy 9L helicopter visibility reduction below 3/4 SM NA. Circling Rwy 27R NA at night.	

ATIS <b>120.675</b>	SOUTH BEND APP CON * <b>118.55 257.8</b>	SOUTH BEND TOWER * <b>135.675 (CTAF) 0 257.8</b>	GND CON <b>121.7</b>	CLNC DEL <b>121.9</b>
------------------------	---	---	-------------------------	--------------------------



CATEGORY	A	B	C	D
LP MDA	1240-1	452 (500-1)	1240-1 3/8	452 (500-1 3/8)
LNAV MDA	1240-1	452 (500-1)	1240-1 3/8	452 (500-1 3/8)
CIRCLING	1280-1	482 (500-1)	1440-1 3/4	1500-2 1/4
			642 (700-1 3/4)	702 (800-2 1/4)

EC-2, 28 NOV 2024 to 26 DEC 2024

EC-2, 28 NOV 2024 to 26 DEC 2024