

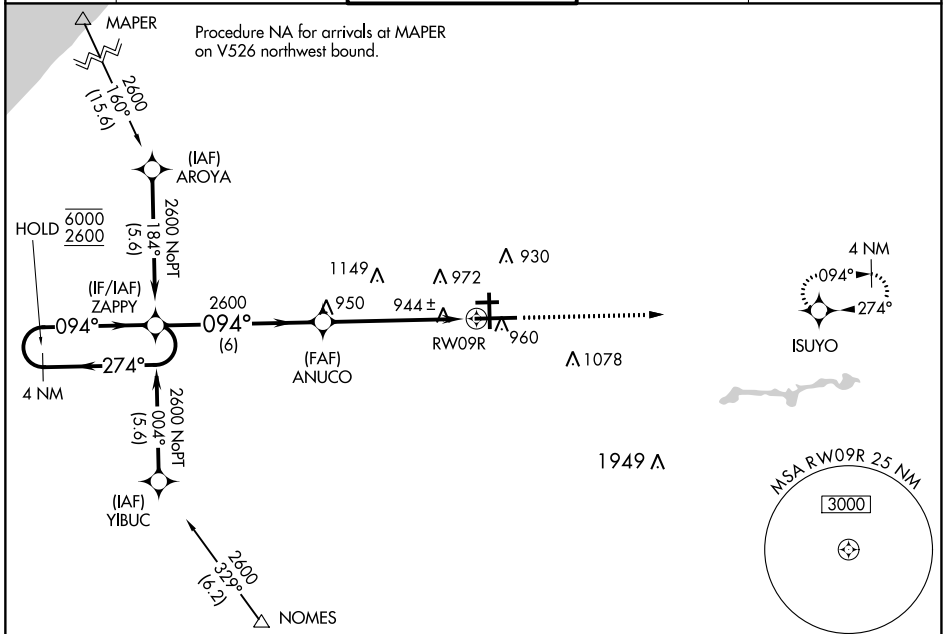
WAAS CH 60908 W09B	APP CRS 094°	Rwy Idg TDZE 790 Apt Elev 798
----------------------------------------	------------------------	---------------------------------------------------

RNAV (GPS) RWY 9R

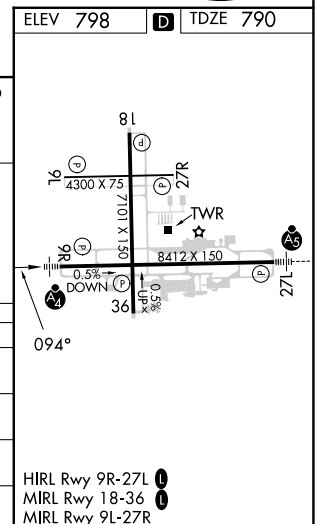
SOUTH BEND INTL (SBN)

RNP APCH - GPS.		MALSF	MISSED APPROACH: Climb to 2600 direct ISUYO and hold.
⚠ For uncompensated Baro-VNAV systems, LNAV/VNAV NA below -1°C or above 54°C. ⚠ Circling Rwy 27R NA at night. Rwy 9R helicopter visibility reduction below RVR 4000 NA. ⚠ For inop ALS, increase LPV all Cats visibility to RVR 5500 and LNAV Cat C/D to RVR 6000.			

ATIS 120.675	SOUTH BEND APP CON ★ 118.55 257.8	SOUTH BEND TOWER ★ 135.675 (CTAF) 257.8	GND CON 121.7	CLNC DEL 121.9
------------------------	---------------------------------------------	---------------------------------------------------	-------------------------	--------------------------



4 NM Holding Pattern		ZAPPY	ANUCO	2600	ISUYO
6000 2600		← 274°	→ 094°	1.1 NM to RWY09R	
GP 3.00° TCH 55			2600		
		6 NM	4.4 NM	1.1 NM	
CATEGORY	A	B	C	D	
LPV DA		1135/40	345 (400-3/4)		
LNAV/VNAV DA		1222/50	432 (500-1)		
LNAV MDA	1200/40	410 (500-3/4)	1200/50	410 (500-1)	
CIRCLING	1280-1	482 (500-1)	1440-1 3/4 642 (700-1 3/4)	1500-2 1/4 702 (800-2 1/4)	



EC-2, 28 NOV 2024 to 26 DEC 2024

EC-2, 28 NOV 2024 to 26 DEC 2024