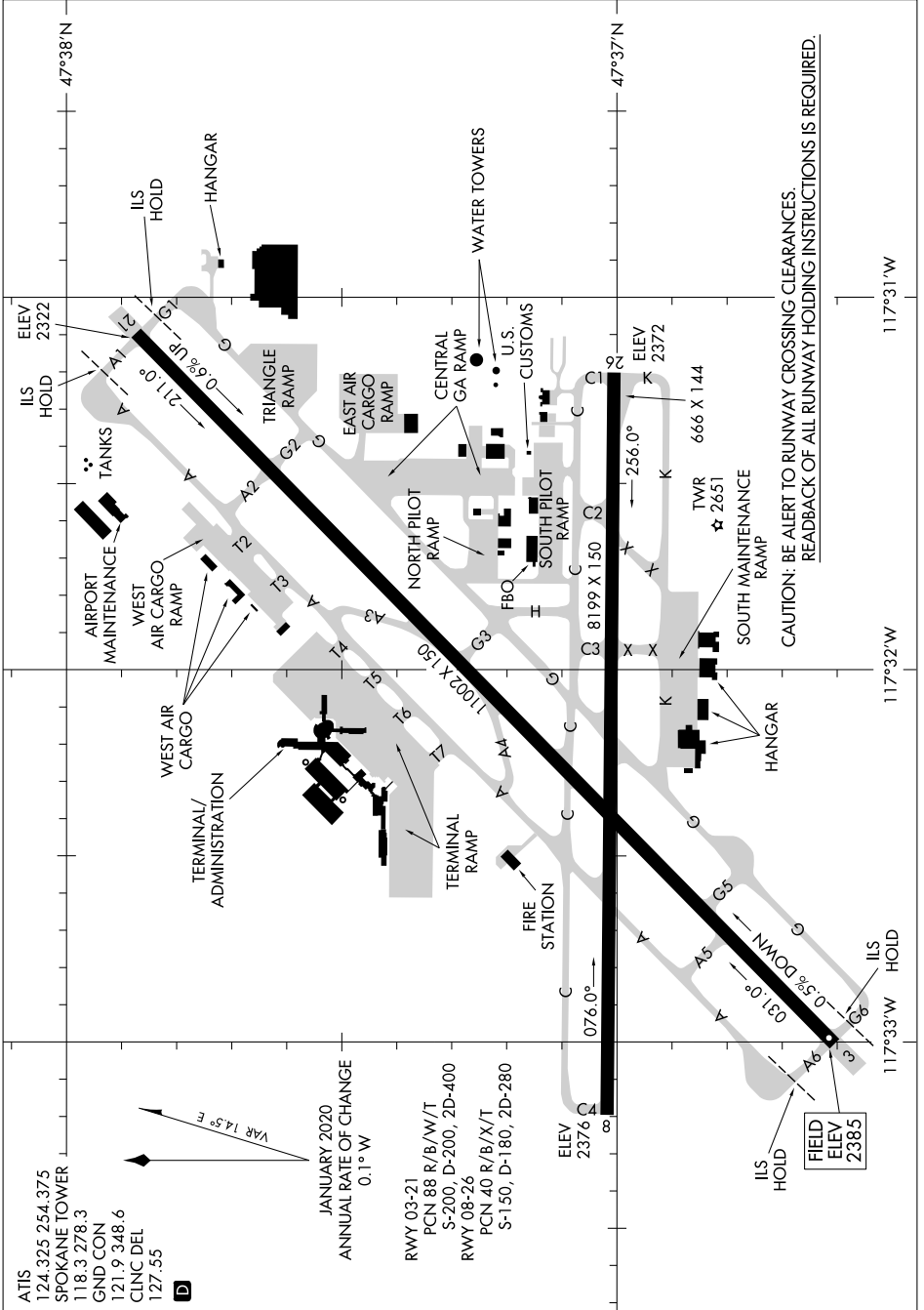


# AIRPORT DIAGRAM

AL-403 (FAA)

SPOKANE INTL (GEG)  
SPOKANE, WASHINGTON

NW-1, 28 NOV 2024 to 26 DEC 2024



CAUTION: BE ALERT TO RUNWAY CROSSING CLEARANCES.  
REARBACK OF ALL RUNWAY HOLDING INSTRUCTIONS IS REQUIRED.

# AIRPORT DIAGRAM

SPOKANE, WASHINGTON  
SPOKANE INTL (GEG)

NW-1, 28 NOV 2024 to 26 DEC 2024

ATIS 124.325 254.375  
 SPOKANE TOWER 118.3 278.3  
 GND CON 121.9 348.6  
 CLNC DEL 127.55

**D**

VAR 14.5° E

JANUARY 2020  
 ANNUAL RATE OF CHANGE  
 0.1° W

RWY 03-21  
 PCN 88 R/B/W/T  
 S-200, D-200, 2D-400

RWY 08-26  
 PCN 40 R/B/X/T  
 S-150, D-180, 2D-280

ELEV 2376

076.0°

ELEV 2385