

APP CRS	Rwy Idg	<b>8199</b>
<b>076°</b>	TDZE	<b>2376</b>
	Apt Elev	<b>2385</b>

# RNAV (RNP) Z RWY 8

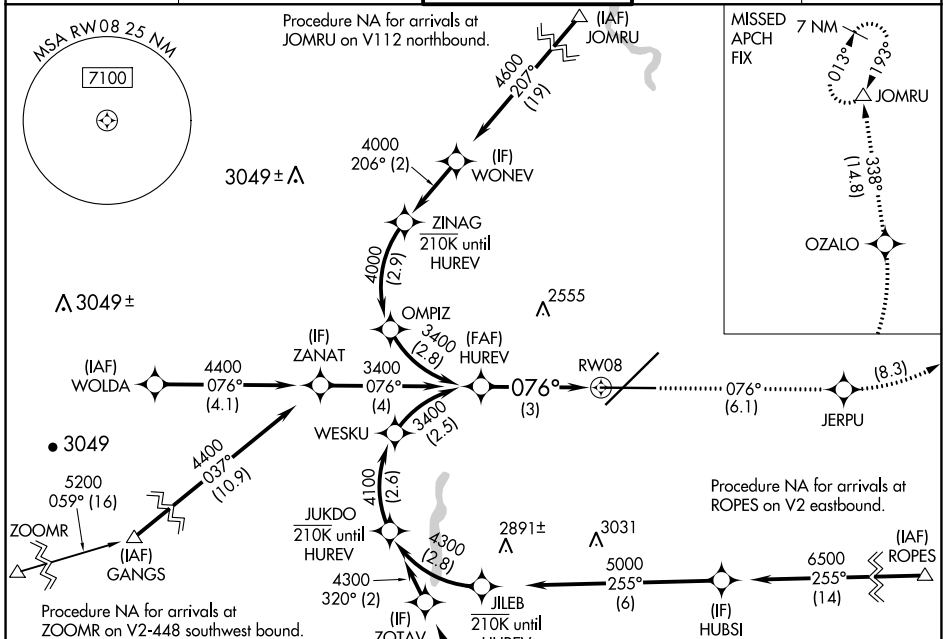
SPOKANE INTL (GEG)

RNP AR APCH. RF required.

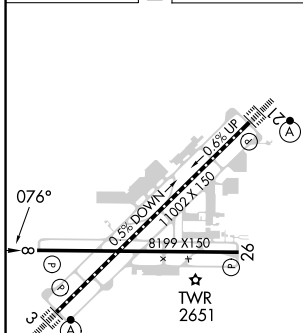
▼ For uncompensated Baro-VNAV systems, procedure NA below -18°C or above 53°C.

MISSED APPROACH: Climb to 7000 on track 076° to JERPU, left turn to OZALO, and on track 338° to JOMRU and hold.

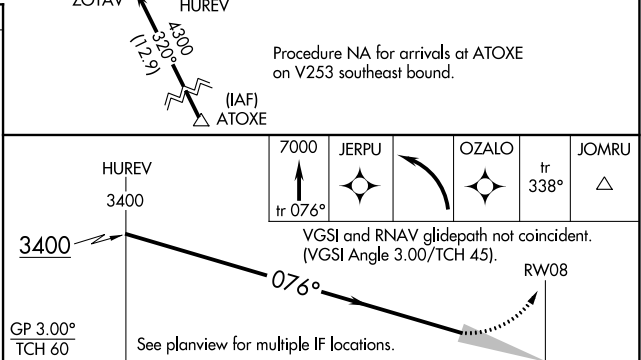
ATIS	SPOKANE APP CON	SPOKANE TOWER	GND CON	CLNC DEL
<b>124.325 254.375</b>	<b>123.75 282.25</b> (205°-025°) <b>133.35 263.0</b> (026°-204°)	<b>118.3 278.3</b>	<b>121.9 348.6</b>	<b>127.55</b>



ELEV 2385	<b>D</b>	TDZE 2376
-----------	----------	-----------



TDZ/CL Rwy 3 and 21	REIL Rwy 8 and 26	HIRL Rwy 3-21	MIRL Rwy 8-26
---------------------	-------------------	---------------	---------------



CATEGORY	A	B	C	D
RNP 0.11 DA		2665-7/8	289 (300-7/8)	
RNP 0.30 DA		2869-1 3/8	493 (500-1 3/8)	

**AUTHORIZATION REQUIRED**

NW-1, 28 NOV 2024 to 26 DEC 2024

NW-1, 28 NOV 2024 to 26 DEC 2024