

FORT LEWIS, WASHINGTON

RNAV (GPS) RWY 15

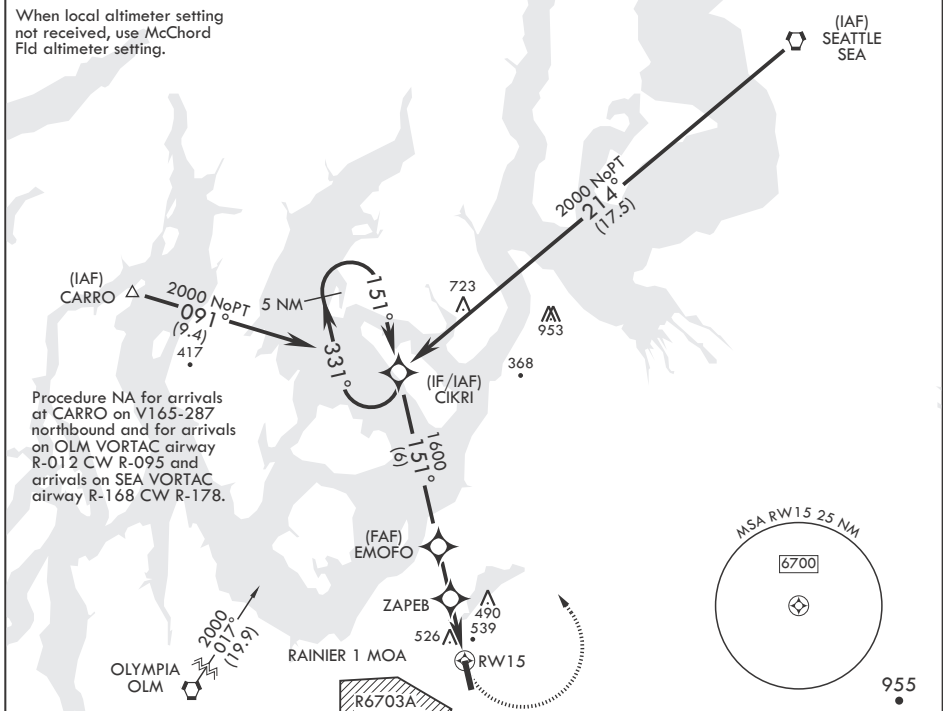
APCH CRS	Rwy Idg	6124
151°	TDZE	300
	Arprt Elev	301

-(USA)

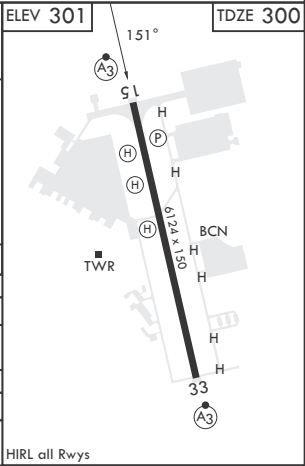
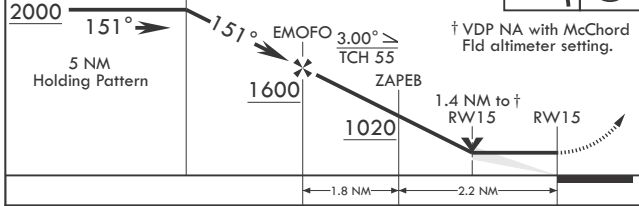
GRAY AAF (JOINT BASE LEWIS MCCHORD) (KGRF)

RNP APCH	SSALR	MISSED APPROACH: Climbing left turn to 2000 direct CIKRI and hold.
▼ * Circling not authorized W of Rwy 15-33.		

ATIS 124.65 306.2	SEATTLE APP CON/DEP CON 120.1 290.9	TOWER * 119.325 (CTAF) 256.8	GND CON 121.9 290.2	CLNC DEL 121.9 290.2
-----------------------------	---	--	-------------------------------	--------------------------------



2000	CIKRI	VGSI and descent angles not coincident.	2000	CIKRI	ELEV 301	TDZE 300
------	-------	---	------	-------	----------	----------



CATEGORY	A	B	C	D
LNAV MDA	800/24	500 (500-½)	800/50	500 (500-1)
CIRCLING*	840-1	539 (600-1)	840-1½ 539 (600-1½)	920-2 619 (700-2)
MC CHORD FLD ALTIMETER SETTING MINIMUMS				
LNAV MDA	820/24		520 (600-½)	
CIRCLING*	860-1	559 (600-1)	860-1½ 559 (600-1½)	940-2 639 (700-2)

FORT LEWIS, WASHINGTON

47°05'N - 122°35'W GRAY AAF (JOINT BASE LEWIS MCCHORD) (KGRF)

Amdt 3 10AUG23

RNAV (GPS) RWY 15

NW-1, 28 NOV 2024 to 26 DEC 2024

NW-1, 28 NOV 2024 to 26 DEC 2024