

DADES ONE ARRIVAL (RNAV) Transition Routes

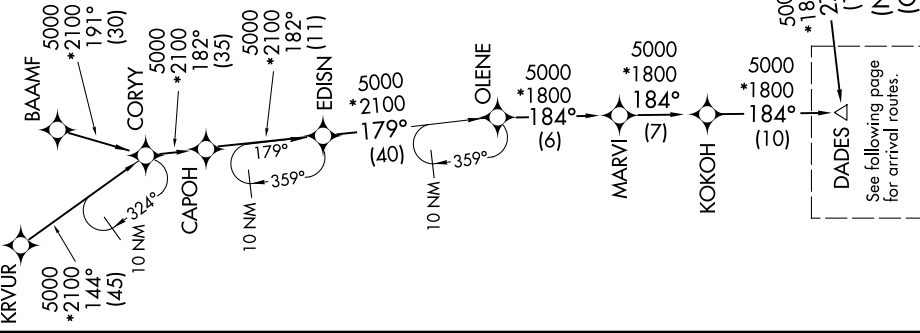
TAMPA, FLORIDA

TAMPA APP CON
135.5 279.6
KMCF ATIS
133.825 270.1
PIE ATIS
134.5
TPA D-ATIS
126.45
VDF AWOS-3
121.125



RNAV 1- DME/DME/IRU or GPS.
RADAR required.

NOTE: Jet and turboprop aircraft only.
NOTE: Do not file KRVR, EDISN, BEAUX and NICCK
Transitions - To be assigned by ATC.



DADES Δ
See following page
for arrival routes.

- BAAMF TRANSITION (BAAMF.DADES1)
- BEAUX TRANSITION (BEAUX.DADES1)
- EDISN TRANSITION (EDISN.DADES1)
- HIBAC TRANSITION (HIBAC.DADES1)
- KRVUR TRANSITION (KRVUR.DADES1)
- NICCK TRANSITION (NICCK.DADES1)

(NARRATIVE ON FOLLOWING PAGE)
(CONTINUED IN FOLLOWING PAGE)

NOTE: Chart not to scale.

DADES ONE ARRIVAL (RNAV) Transition Routes

TAMPA, FLORIDA