

LOC/DME I-JRT 108.5 Chan 22	APP CRS 187°	Rwy Idg 11002 TDZE 21 Apt Elev 26
--	------------------------	--

ILS or LOC RWY 19R

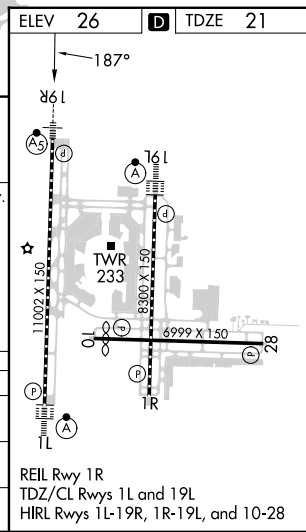
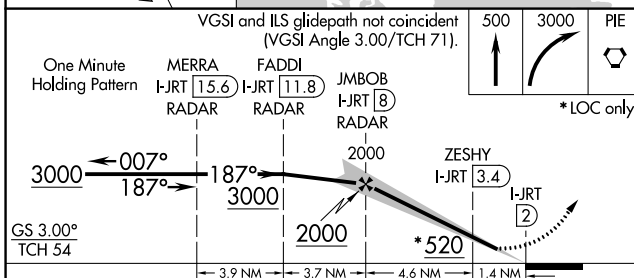
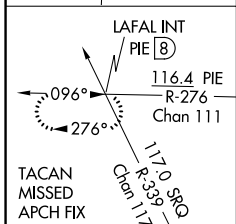
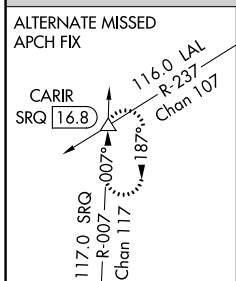
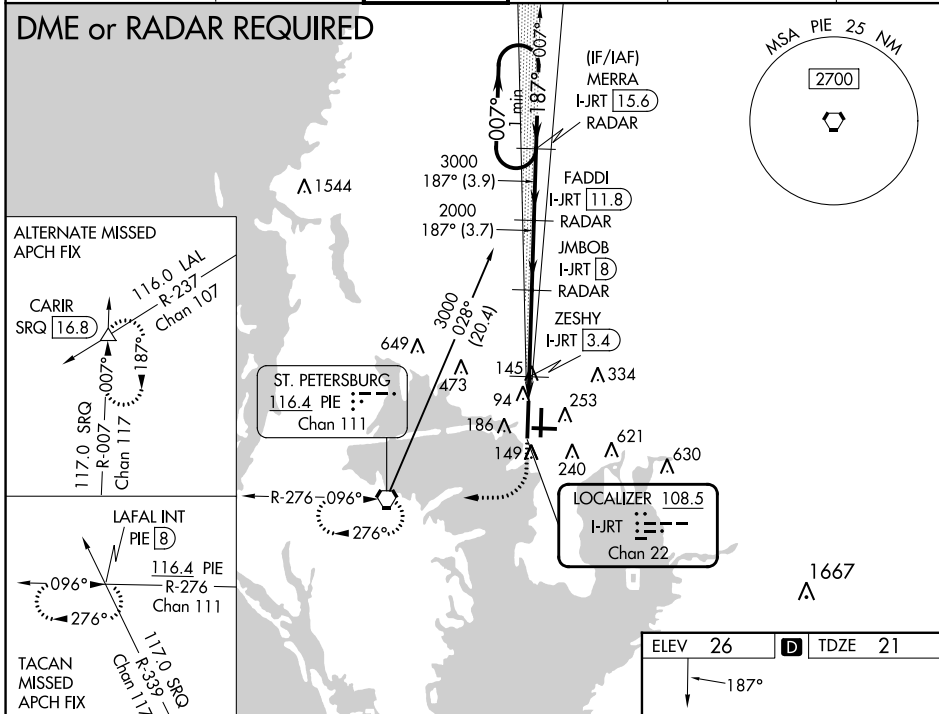
TAMPA INTL (TPA)

∇ DME required. Simultaneous approach authorized.
▲ For inop ALS, increase S-ILS 19R Cat E visibility to RVR 4000 and S-LOC 19R Cats C/D/E visibility to RVR 5500.
 #RVR 1800 authorized with use of FD or AP or HUD to DA.

MALS (IF/IAF) MERRA I-JRT **15.6** RADAR

MISSED APPROACH: Climb to 500 then climbing right turn to 3000 direct PIE VORTAC and hold, continue climb-in-hold to 3000 (TACAN aircraft climb to 500 then climbing right turn to 4000 direct PIE VORTAC then on PIE VORTAC R-276 to LAFAL/PIE 8 DME and hold W, 096° inbound.)

ARR 126.45	D-ATIS 128.475	DEP 118.5 307.175	TAMPA APP CON 119.5 269.4	TAMPA TOWER 121.7 269.4	GND CON 121.7 269.4	CLNC DEL 133.6	CPDLC
-------------------	-----------------------	--------------------------	----------------------------------	--------------------------------	----------------------------	-----------------------	-------



CATEGORY	A	B	C	D	E
S-ILS 19R#	221/24 200 (200-½)				
S-LOC 19R	400/24 379 (400-½)	400/35 379 (400-¾)			
C CIRCLING	560-1 534 (600-1)	680-1¾ 654 (700-1¾)	980-3 954 (1000-3)		

SE-3, 28 NOV 2024 to 26 DEC 2024

SE-3, 28 NOV 2024 to 26 DEC 2024