

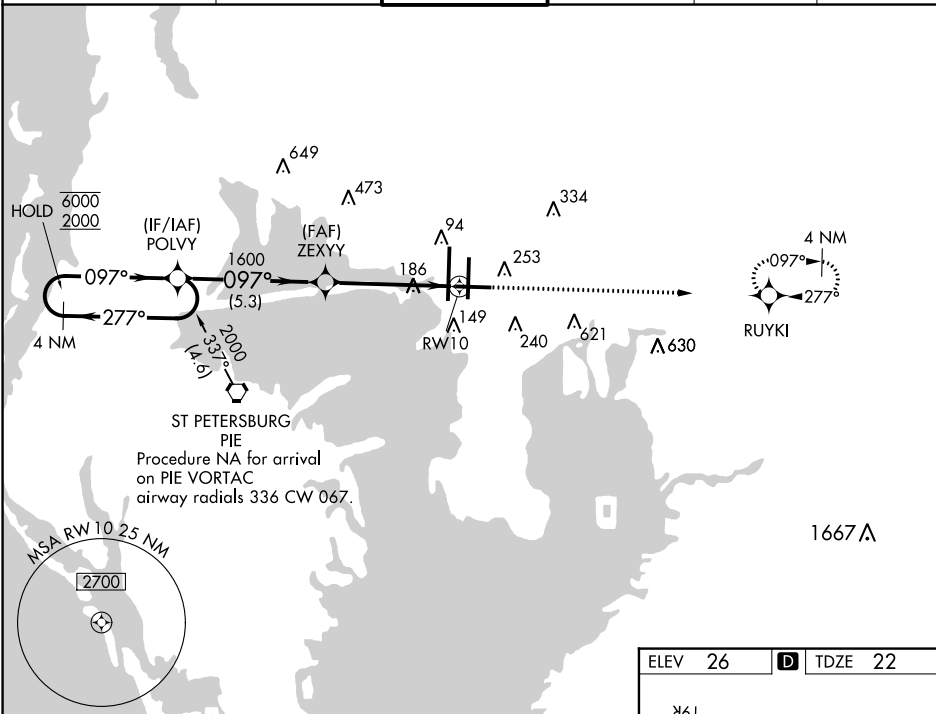
WAAS CH <b>77720</b> <b>W10A</b>	APP CRS <b>097°</b>	Rwy Idg TDZE <b>22</b> Apt Elev <b>26</b>	<b>6501</b>
--	------------------------	---	-------------

# RNAV (GPS) RWY 10

TAMPA INTL (TPA)

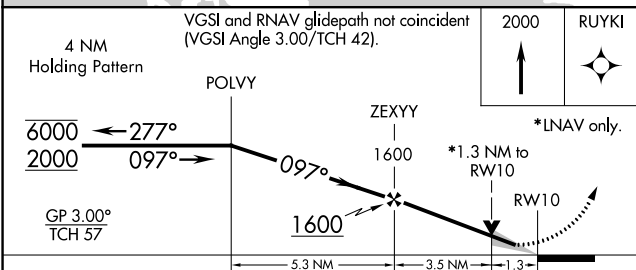
RNP APCH.	MISSED APPROACH: Climb to 2000 direct RUYKI and hold.
▼ For uncompensated Baro-VNAV systems, LNAV/VNAV NA below 2°C or above 54°C.	

ARR	D-ATIS	DEP	TAMPA APP CON	TAMPA TOWER	GND CON	CLNC DEL	CPDLC
<b>126.45</b>		<b>128.475</b>	<b>118.5 307.175</b>	<b>119.5 269.4</b>	<b>121.7 269.4</b>	<b>133.6</b>	

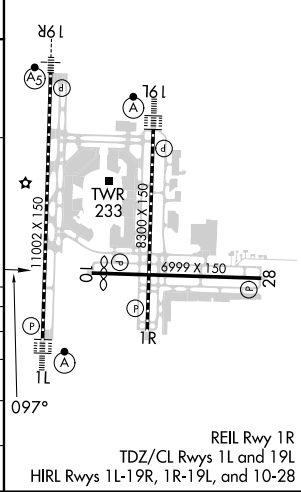


SE-3, 28 NOV 2024 to 26 DEC 2024

SE-3, 28 NOV 2024 to 26 DEC 2024



ELEV 26	<b>D</b> TDZE 22
---------	------------------



CATEGORY	A	B	C	D
LPV DA		272-1	250 (300-1)	
LNAV/VNAV DA		436-1 $\frac{3}{8}$	414 (500-1 $\frac{3}{8}$ )	
LNAV MDA	480-1 458 (500-1)		480-1 $\frac{3}{8}$ 458 (500-1 $\frac{3}{8}$ )	
<b>C</b> CIRCLING	560-1 534 (600-1)		680-1 $\frac{3}{4}$ 654 (700-1 $\frac{3}{4}$ )	980-3 954 (1000-3)

REIL Rwy 1R  
TDZ/CL Rwy 1L and 19L  
HIRL Rwy 1L-19R, 1R-19L, and 10-28