

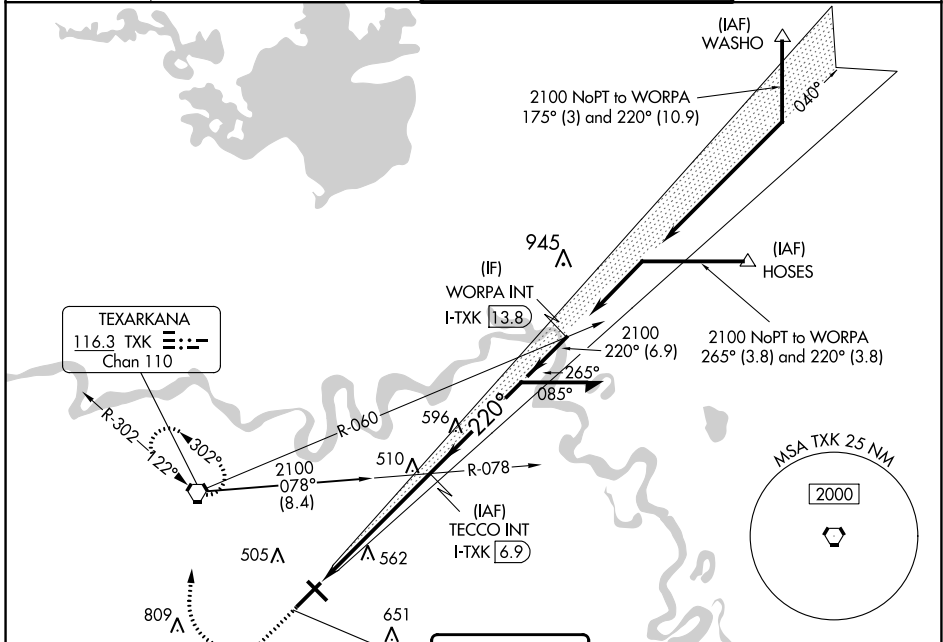
LOC/DME I-TXK <b>111.9</b> Chan <b>56</b>	APP CRS <b>220°</b>	Rwy ldg <b>6602</b> TDZE <b>384</b> Apt Elev <b>390</b>
---	------------------------	---

# ILS or LOC RWY 22

TEXARKANA RGNL-WEBB FLD (TXK)

<p>For inop ALS, increase S-LOC 22 Cats C/D visibility to 1 SM.</p>	<p>MALSR</p>	<p>MISSED APPROACH: Climb to 900 then climbing right turn to 2000 direct TXK VORTAC and hold, continue climb-in-hold to 2000.</p>
---	--------------	---

ATIS <b>120.2</b>	FORT WORTH CENTER <b>123.925 269.475</b>	TEXARKANA TOWER* <b>123.875 (CTAF) 0 235.625</b>	GND CON <b>119.225</b>
----------------------	---	---	---------------------------

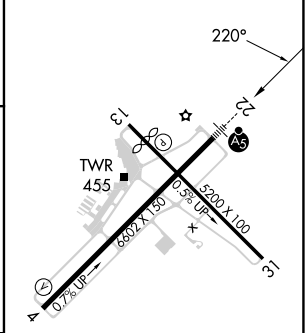
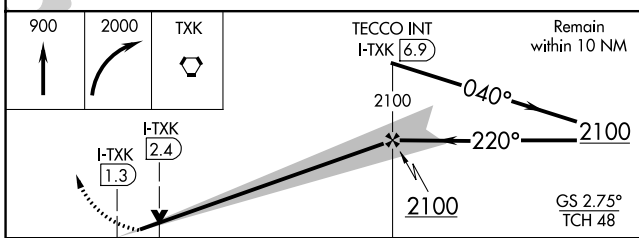


SC-1, 28 NOV 2024 to 26 DEC 2024

SC-1, 28 NOV 2024 to 26 DEC 2024

<p>TEXARKANA 116.3 TXK Chan 110</p> <p>R-302-122°</p> <p>302°</p>	<p>LOCALIZER 111.9 I-TXK Chan 56</p>
---	--

ELEV 390	TDZE 384
----------	----------



CATEGORY	A	B	C	D
S-ILS 22		584-1/2	200 (200-1/2)	
S-LOC 22	760-1/2	376 (400-1/2)	760-5/8	376 (400-5/8)
CIRCLING	820-1 430 (500-1)	900-1 510 (600-1)	1000-1 3/4 610 (700-1 3/4)	1080-2 1/4 690 (700-2 1/4)

MIRL Rwy 13-31	
HIRL Rwy 4-22	
FAF to MAP 5.6 NM	
Knots	60 90 120 150 180
Min:Sec	5:36 3:44 2:48 2:14 1:52