

LOC/DME I-TYK 110.7 Chan 44	APP CRS 099°	Rwy ldg TDZE Apt Elev 7016 624 624
---	------------------------	--


ILS or LOC RWY 10

CHERRY CAPITAL (TVC)

RNP APCH - GPS. From BABBE, or IROTO, or FEPEX, or CUBKO.
DME required.

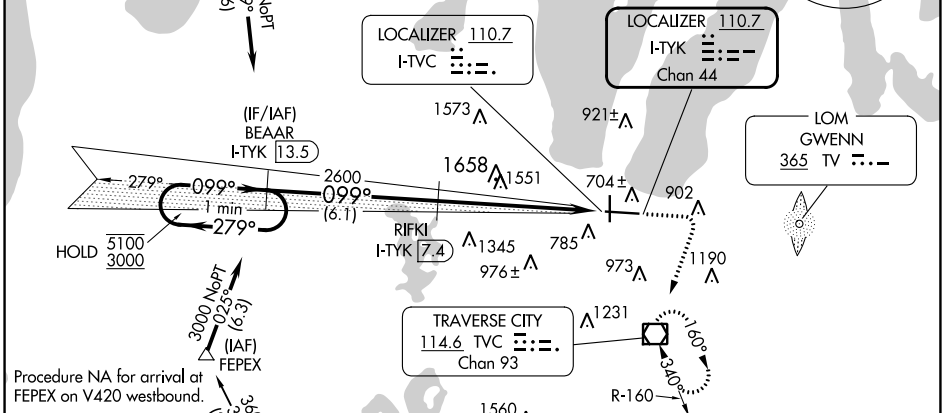
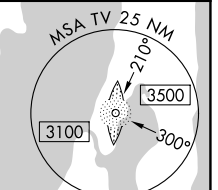
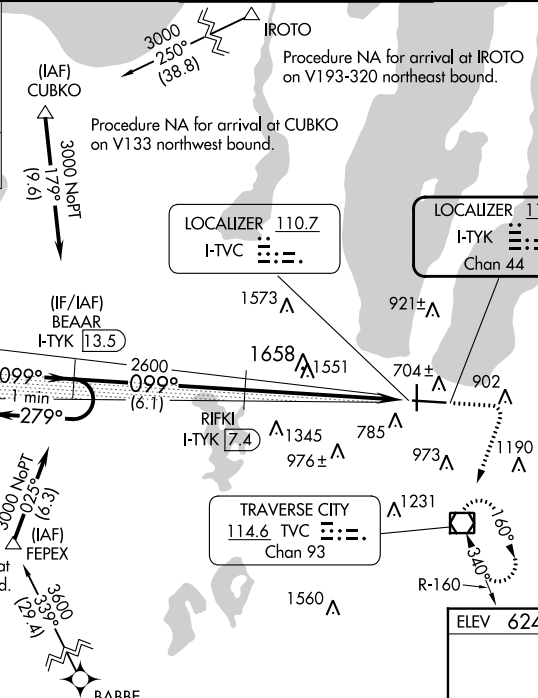
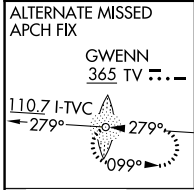
▼ Rwy 10 helicopter visibility reduction below 3/4 SM NA.
▲ For inop ALS, increase S-ILS 10 all Cats visibility to 3/8 SM.

MALSR

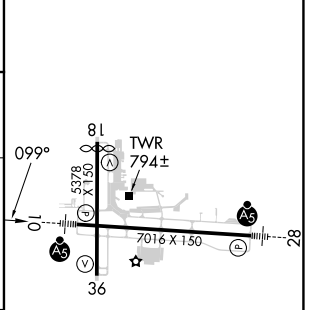
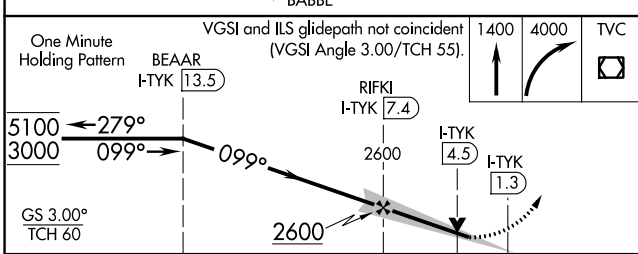


MISSED APPROACH: Climb to 1400 then climbing right turn to 4000 direct TVC VOR/DME and hold, continue climb-in-hold to 4000.

ATIS 119.175	MINNEAPOLIS CENTER 132.9 338.3	TRAVERSE CITY TOWER* 124.2 (CTAF) 0 348.6	GND CON 121.8 348.6	UNICOM 122.95
------------------------	--	---	-------------------------------	-------------------------



ELEV 624	D TDZE 624
----------	-------------------



CATEGORY	A	B	C	D
S-ILS 10	917-3/4 293 (300-3/4)			
S-LOC 10	1700-3/4 1076 (1100-3/4)	1700-1 1076 (1100-1)	1700-2 1/2 1076 (1100-2 1/2)	
C CIRCLING	1700-1 1/4 1076 (1100-1 1/4)	1700-1 1/2 1076 (1100-1 1/2)	1700-3 1076 (1100-3)	1720-3 1096 (1100-3)

- HIRL Rwy 10-28 **1**
- MIRL Rwy 18-36 **1**
- REIL Rwy 36 **1**

EC-1, 28 NOV 2024 to 26 DEC 2024

EC-1, 28 NOV 2024 to 26 DEC 2024