

WAAS CH 65726 W05A	APP CRS 050°	Rwy Idg TDZE Apt Elev	8000 1498 1519
--	------------------------	-----------------------------	---

RNAV (GPS) RWY 5

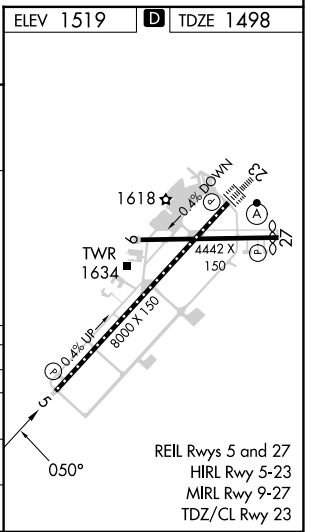
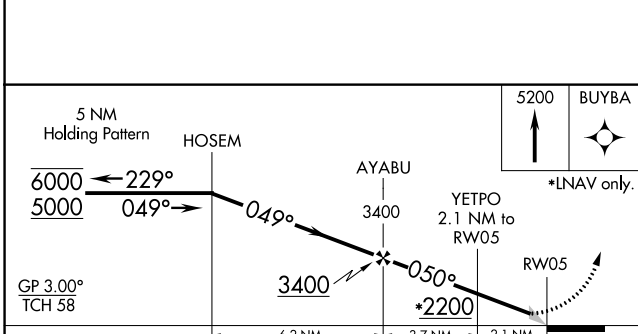
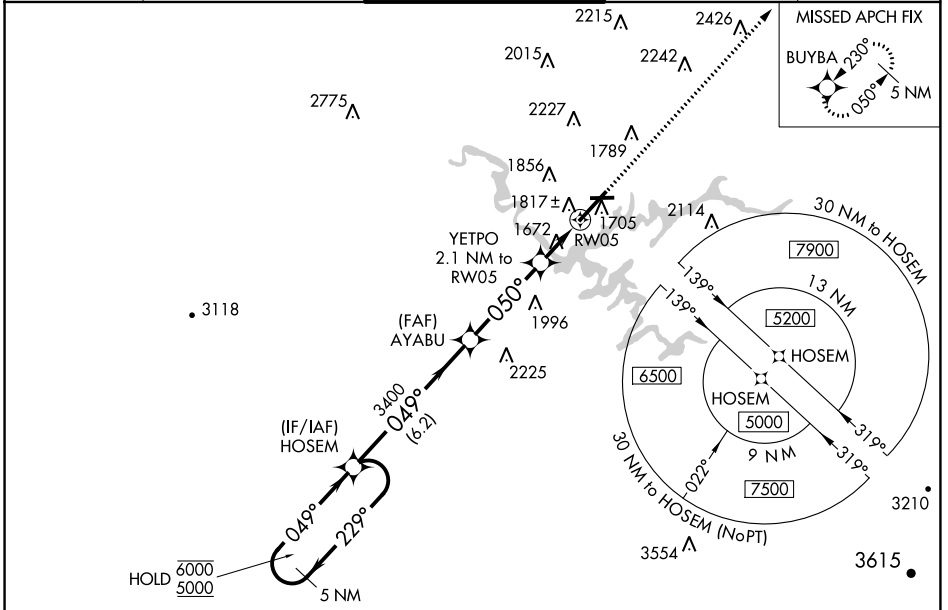
TRI-CITIES (TRI)

RNP APCH.

⚠ Circling to Rwy 9 NA at night. Circling NA northwest of Rwys 9 and 23.
⚠ For uncompensated Baro-VNAV systems, LNAV/VNAV NA below -13°C or above 34°C.

MISSED APPROACH: Climb to 5200 direct BUYBA and hold.

ATIS 118.25	TRI-CITY APP CON * 134.425 349.0	TRI-CITY TOWER * 119.5 (CTAF) 257.8	GND CON 121.7 348.6	UNICOM 122.95
-----------------------	--	---	-------------------------------	-------------------------



CATEGORY	A	B	C	D
LPV DA		1698/40	200 (200-¾)	
LNAV/VNAV DA		1998-1¾	500 (500-1¾)	
LNAV MDA	2080/55	582 (600-1)	2080-1¾	582 (600-1¾)
C CIRCLING	2120-1 601 (700-1)	2180-1 661 (700-1)	2320-2¼ 801 (900-2¼)	2500-3 981 (1000-3)

SE-1, 28 NOV 2024 to 26 DEC 2024

SE-1, 28 NOV 2024 to 26 DEC 2024