

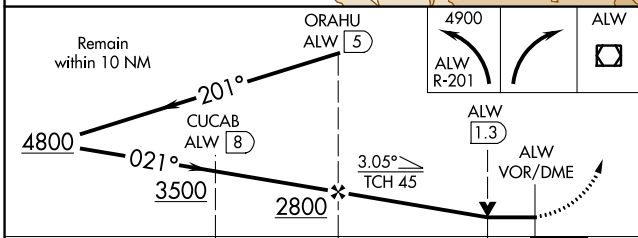
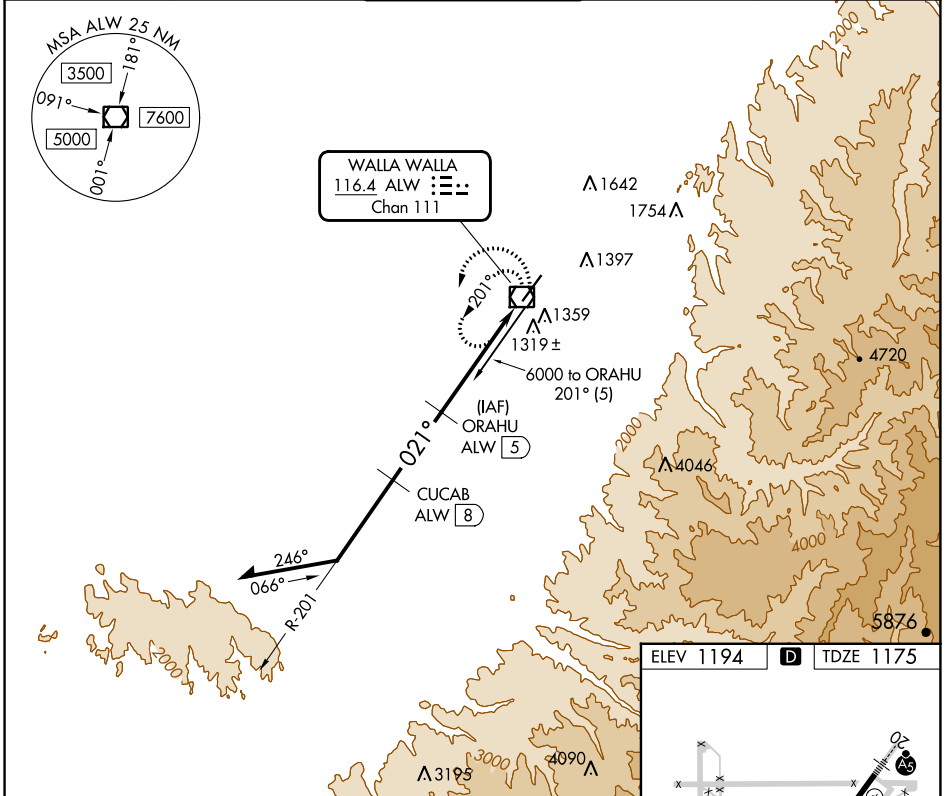
VOR/DME ALW 116.4 Chan 111	APP CRS 021°	Rwy Idg 6527 TDZE 1175 Apt Elev 1194
--	------------------------	---

VOR RWY 2

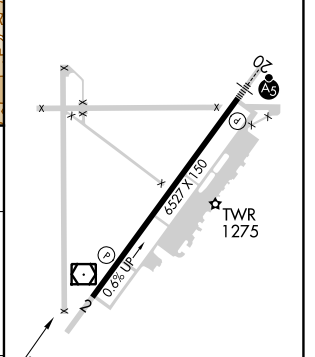
WALLA WALLA RGNL (ALW)

DME required.	MISSED APPROACH: Climbing left turn to 4900 on ALW VOR/DME R-201 within 10 DME then right turn direct ALW VOR/DME and hold, continue climb-in-hold to 4900.
Rwy 2 helicopter visibility reduction below 3/4 SM NA.	

ASOS 135.875	SPOKANE APP CON ★ 133.15 379.15	WALLA WALLA TOWER ★ 118.5 (CTAF) 289.4	GND CON 121.6 289.4	UNICOM 122.95
------------------------	---	--	-------------------------------	-------------------------



ELEV 1194	D	TDZE 1175
-----------	----------	-----------



CATEGORY	A	B	C	D
S-2	1580-1	405 (400-1)	1580-1 1/8	405 (400-1 1/8)
CIRCLING	1760-1 566 (600-1)	1820-1 626 (700-1)	2120-2 3/4 926 (1000-2 3/4)	2300-3 1106 (1200-3)

REL Rwy 2	HIRL Rwy 2-20
-----------	---------------

NW-1, 28 NOV 2024 to 26 DEC 2024

NW-1, 28 NOV 2024 to 26 DEC 2024