

WAAS CH <b>65925</b> <b>W18A</b>	APP CRS <b>179°</b>	Rwy Idg TDZE Apt Elev	<b>5001</b> <b>275</b> <b>279</b>
--	------------------------	-----------------------------	---

# RNAV (GPS) RWY 18

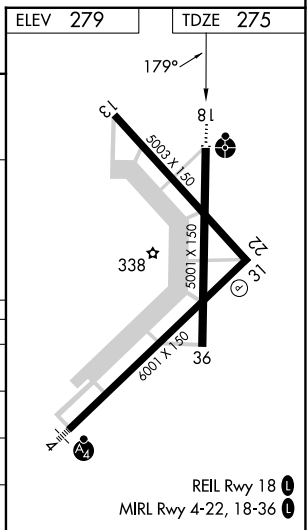
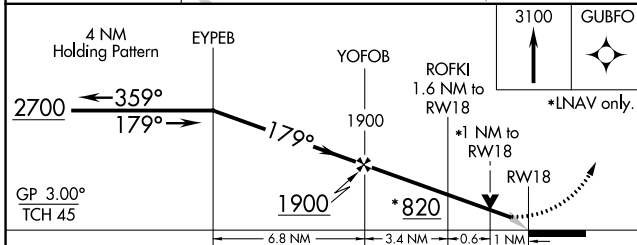
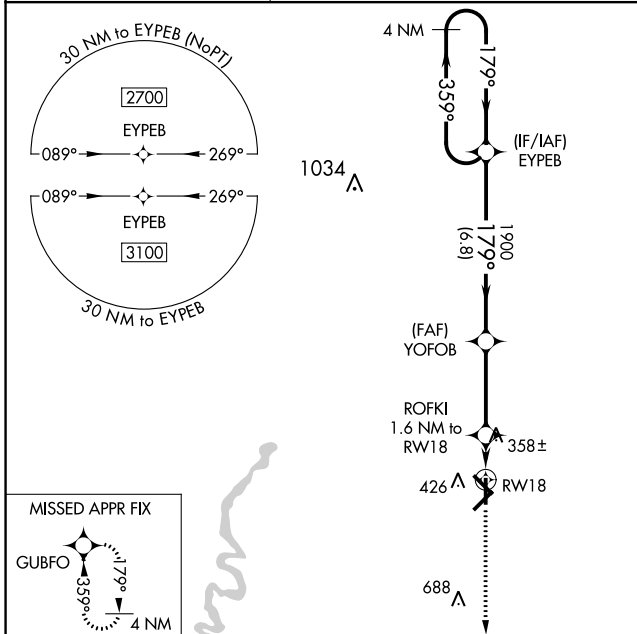
WALNUT RIDGE RGNL (A.R.G)

**⚠** For uncompensated Baro-VNAV systems, LNAV/VNAV NA below -15°C (5°F) or above 42°C (107°F). DME/DME RNP-0.3 NA. When local altimeter setting not received, use Jonesboro altimeter setting and increase LPV DA to 529 feet, LNAV/VNAV DA to 579 feet, and all MDAs 60 feet; increase Circling Cat D visibility ¼ SM. For inoperative ODALS, increase LPV all Cats and LNAV/VNAV all Cats visibility to ¾ mile and LNAV Cat C and D visibility to 1 mile. Baro-VNAV and VDP NA with Jonesboro altimeter setting.



MISSED APPROACH:  
Climb to 3100 direct  
GUBFO and hold.

AWOS-3PT <b>126.525</b>	MEMPHIS CENTER <b>120.075 289.4</b>	UNICOM <b>122.8</b> (CTAF) <b>0</b>
----------------------------	--	--



CATEGORY	A	B	C	D
LPV DA		475-¾	200 (200-¾)	
LNAV/VNAV DA		525-¾	250 (300-¾)	
LNAV MDA	620-¾	345 (400-¾)	620-⅞	345 (400-⅞)
CIRCLING	760-1	481 (500-1)	800-1½ 521 (600-1½)	1000-2¼ 721 (800-2¼)

SC-1, 28 NOV 2024 to 26 DEC 2024

SC-1, 28 NOV 2024 to 26 DEC 2024