

WARNER ROBINS, GEORGIA

RNAV (GPS) RWY 15

APCH CRS	Rwy Idg	12,001
146°	TDZE	294
	Arprt Elev	294

- (USAF)

ROBINS AFB (KWRB)

* When ALS inop, increase CAT AB RVR to 55, vis to 1 mile, CAT CDE vis to 1 5/8 miles.
 ** Circling NA SW of Rwy 15-33.

ALSF-1

MISSED APPROACH: Climb to 2700 direct LETIC and hold.

ATIS 119.475 273.475	ATLANTA APP CON/DEP CON 124.2 279.6	TOWER 133.225 257.975	GND CON 121.85 275.8
-------------------------	--	--------------------------	-------------------------

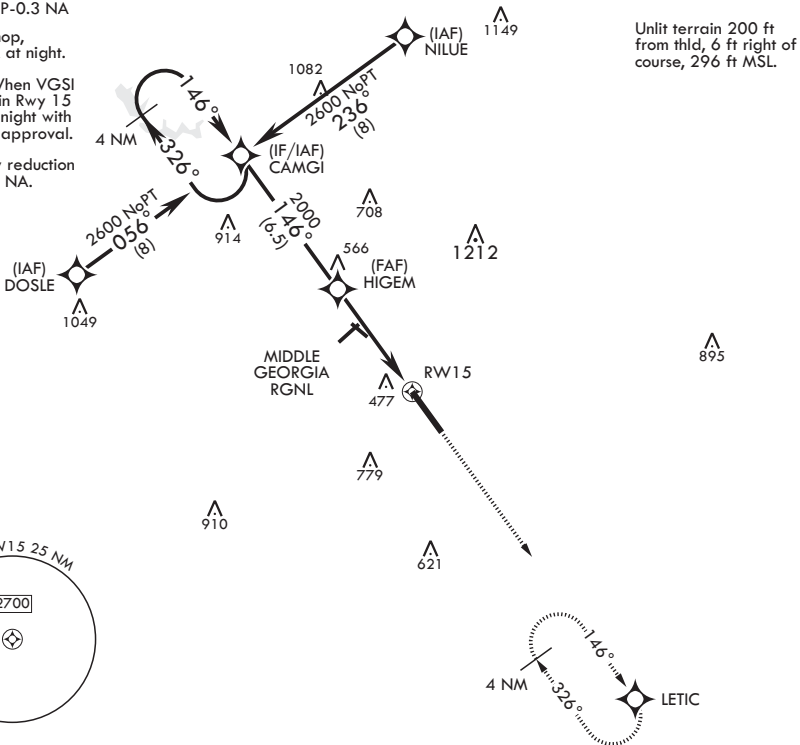
DME/DME RNP-0.3 NA

When VGSi inop, procedure NA at night.

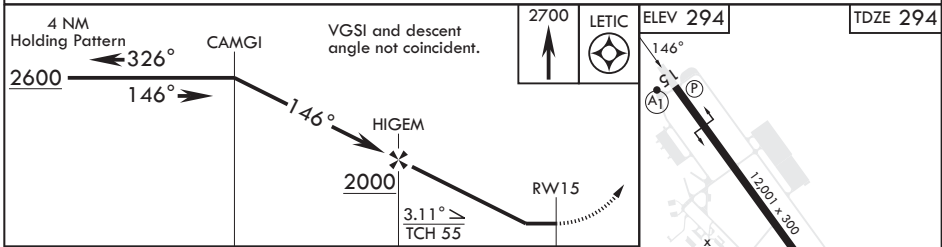
USAF Only: When VGSi inop, straight-in Rwy 15 authorized at night with MAJCOM A3 approval.

RNAV visibility reduction by helicopters NA.

729



EMERG SAFE ALT 100 NM 3700



CATEGORY	A	B	C	D	E
LNVA MDA*	860/50	566 (600-1)	860-1¼	566	(600-1¼)
CIRCLING**	860-1	567 (600-1)	860-1½ 567 (600-1½)	960-2 667 (700-2)	1100-2¾ 807 (900-2¾)

WARNER ROBINS, GEORGIA

32°38'N - 83°36'W

ROBINS AFB (KWRB)

Amdt 4 31JAN19

RNAV (GPS) RWY 15

SE-4, 28 NOV 2024 to 26 DEC 2024

SE-4, 28 NOV 2024 to 26 DEC 2024