

DOCTR FIVE DEPARTURE (RNAV)

AL-443 (FAA)

WASHINGTON, DC

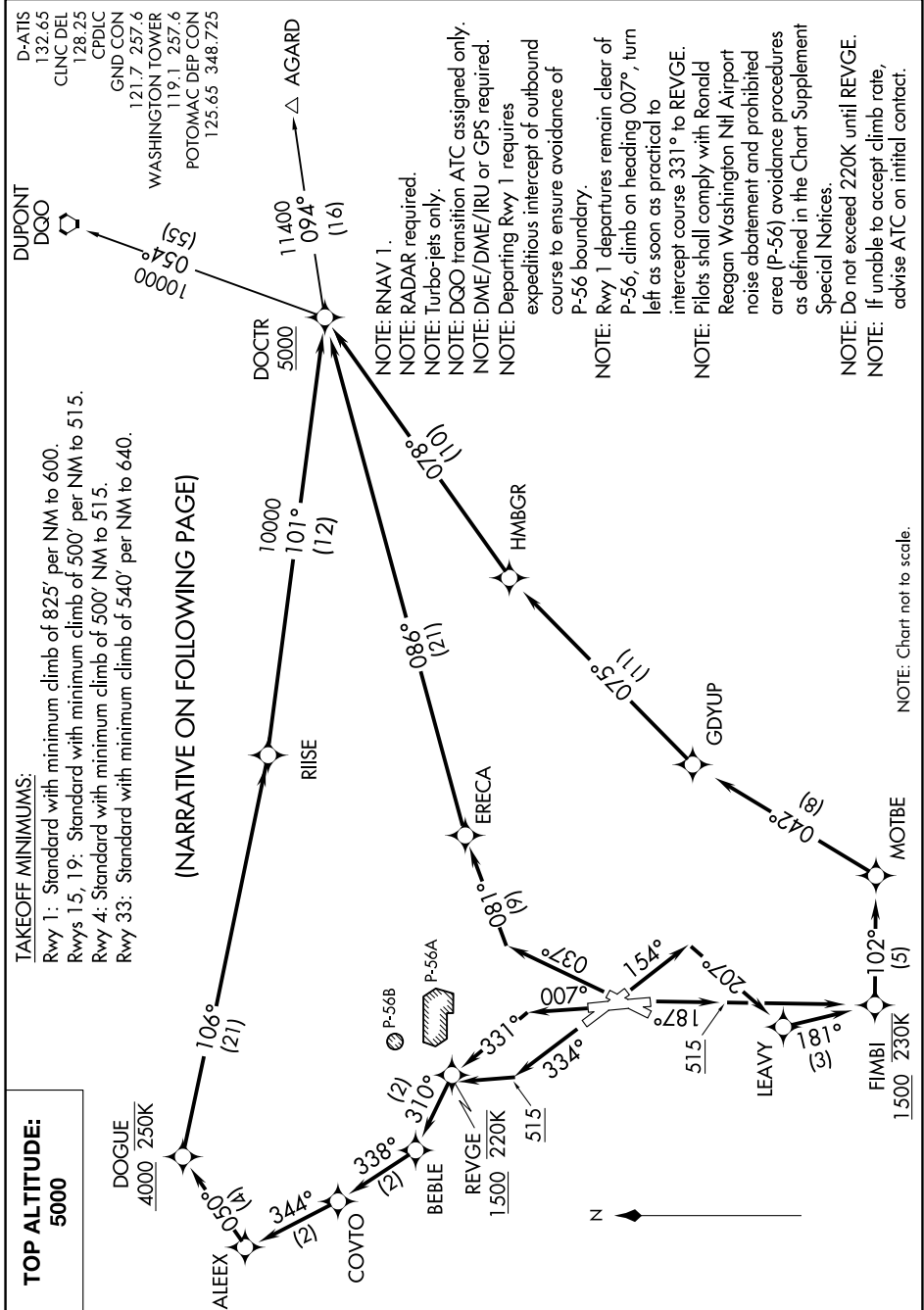
NE-3, 28 NOV 2024 to 26 DEC 2024

TAKEOFF MINIMUMS:

- Rwy 1: Standard with minimum climb of 825' per NM to 600.
- Rwys 15, 19: Standard with minimum climb of 500' per NM to 515.
- Rwy 4: Standard with minimum climb of 500' NM to 515.
- Rwy 33: Standard with minimum climb of 540' per NM to 640.

TOP ALTITUDE: 5000

(NARRATIVE ON FOLLOWING PAGE)



NOTE: Chart not to scale.

NE-3, 28 NOV 2024 to 26 DEC 2024

DOCTR FIVE DEPARTURE (RNAV)