

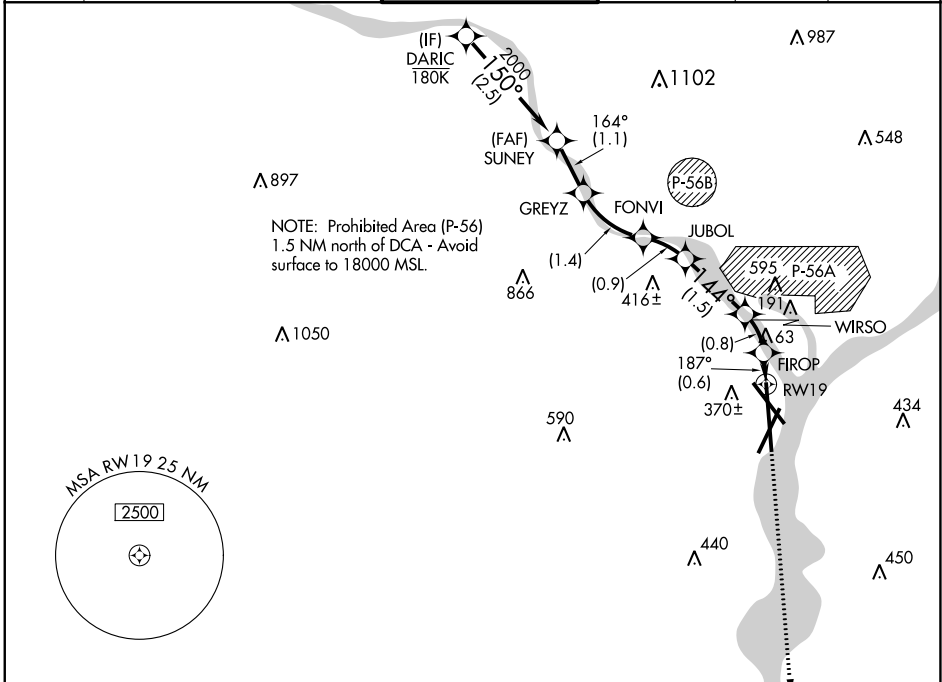
APP CRS	Rwy Idg	6869
187°	TDZE	13
	Apt Elev	14

RNAV (RNP) Z RWY 19

RONALD REAGAN WASHINGTON NTL (DCA)

RNP AR APCH - GPS.	MALSF	MISSED APPROACH: Climb to 3000 on the final approach track to RW19 then direct BADDN and hold, continue climb-in-hold to 3000.			
Inop table does not apply. For uncompensated Baro-VNAV systems, procedure NA below -8°C or above 54°C.					

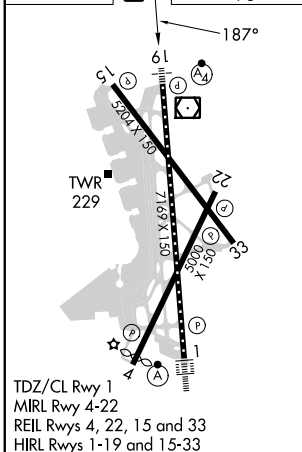
D-ATIS	POTOMAC APP CON	WASHINGTON TOWER	GND CON	CLNC DEL	CPDLC
132.65	119.85 239.25 (WEST/SOUTH) 124.2 360.8 (EAST)	119.1 257.6	121.7 257.6	128.25	



NE-3, 28 NOV 2024 to 26 DEC 2024

NE-3, 28 NOV 2024 to 26 DEC 2024

ELEV	14	D	TDZE	13
------	----	----------	------	----



DARIC	SUNEY	GREYZ	FONVI	JUBOL	WIRSO	FIROP	BADDN
2700	2000	1700	1226	954	492	241	
GP 3.00°	TCH 50	3000	Final App Tr to RW19				
← 2.5 NM		← 1.1 NM		← 1.4 NM		← 0.9 NM	
← 1.5 NM		← 0.8 NM		← 0.6 NM			
CATEGORY	A	B	C	D			
RNP 0.11 DA	491/60		478 (500-1¼)				
RNP 0.30 DA	550-1½		537 (600-1½)				
AUTHORIZATION REQUIRED							