

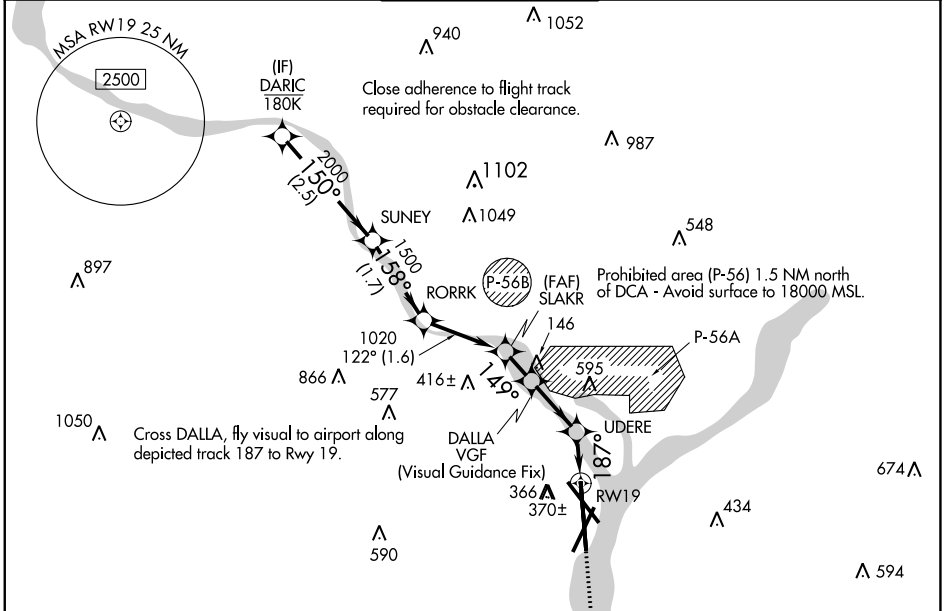
APP CRS	Rwy Idg	6869
187°	TDZE	13
	Apt Elev	14

RNAV (GPS) Y RWY 19

RONALD REAGAN WASHINGTON NTL (DCA)

RNP APCH - GPS.	MALSF A4	MISSED APPROACH: (Do not exceed 165K until Rwy 19) Climb to 3000 on FMS lateral path to Rwy 19, then direct BADDN and hold, continue climb-in-hold to 3000. If unable to follow the FMS lateral path, climb to 3000 and turn to heading 187° direct BADDN and hold, continue climb-in-hold to 3000.
RADAR required.		
<p>▼</p> <p>▲ Rwy 19 helicopter visibility reduction below ¾ SM NA. Inop table does not apply.</p>		

D-ATIS	POTOMAC APP CON	WASHINGTON TOWER	GND CON	CLNC DEL	CPDLC
132.65	119.85 239.25 (WEST/SOUTH) 124.2 360.8 (EAST)	119.1 257.6	121.7 257.6	128.25	



NE-3, 28 NOV 2024 to 26 DEC 2024

NE-3, 28 NOV 2024 to 26 DEC 2024

