

SCRAM SIX DEPARTURE (RNAV)

NE-3, 28 NOV 2024 to 26 DEC 2024

**TOP ALTITUDE:
5000**

D-ATIS
132.65
CLINC DEL
128.25
GPBLC

GND CON
121.7 257.6

WASHINGTON TOWER

119.1 257.6

POTOMAC DEP CON

118.95 257.2

TAKEOFF MINIMUMS

Rwy 1: Standard with minimum climb of 825' per NM to 600.

Rwys 15, 19: Standard with minimum climb of 500' per NM to 515.

Rwy 33: Standard with minimum climb of 540' per NM to 640.

If unable to accept climb rate, advise ATC on initial contact.

NOTE: RNAV 1.

NOTE: RADAR required.

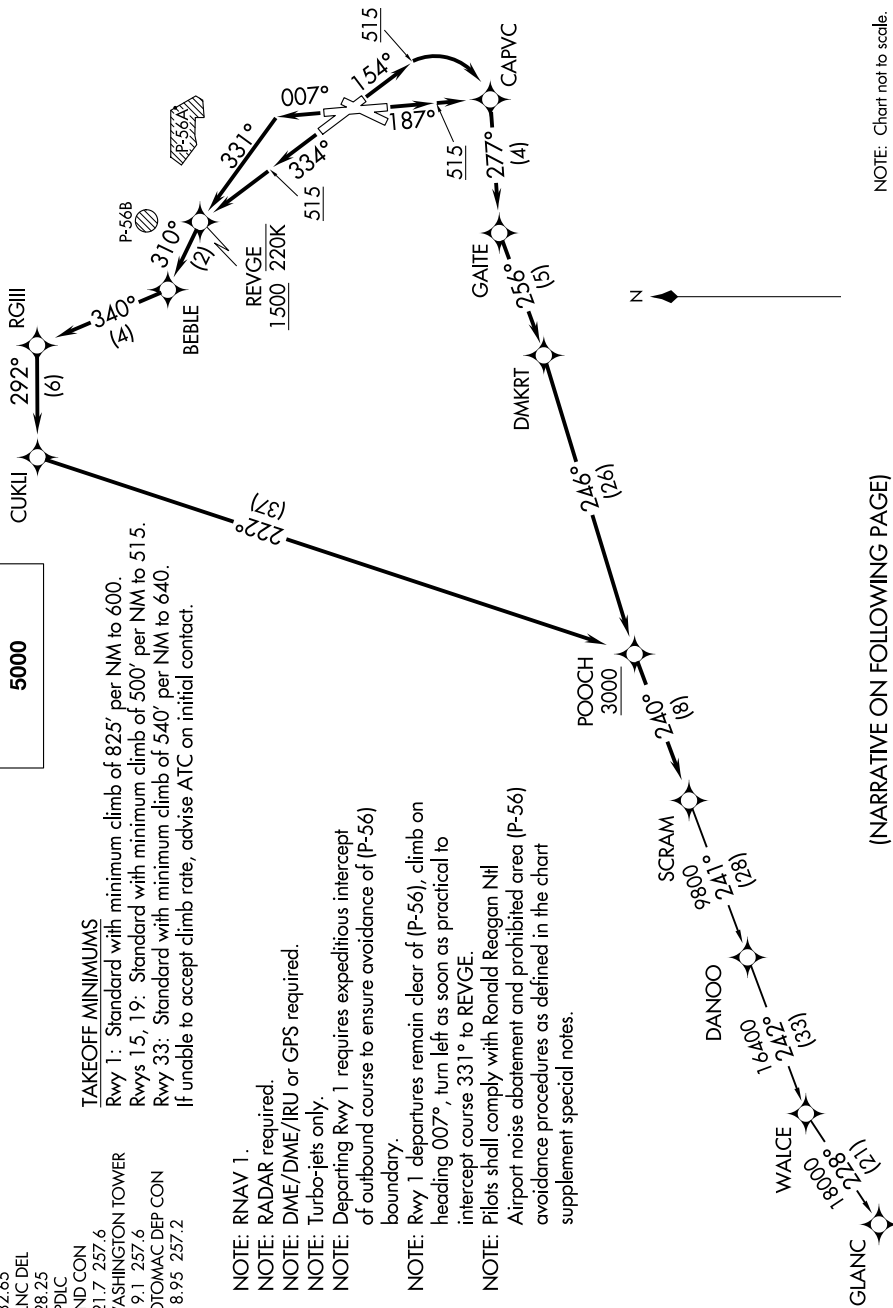
NOTE: DME/DME/IRU or GPS required.

NOTE: Turbo-jets only.

NOTE: Departing Rwy 1 requires expeditious intercept of outbound course to ensure avoidance of (P-56) boundary.

NOTE: Rwy 1 departures remain clear of (P-56), climb on heading 007°, turn left as soon as practical to intercept course 331° to REVEGE.

NOTE: Pilots shall comply with Ronald Reagan NII Airport noise abatement and prohibited area (P-56) avoidance procedures as defined in the chart supplement special notes.



NOTE: Chart not to scale.

(NARRATIVE ON FOLLOWING PAGE)

NE-3, 28 NOV 2024 to 26 DEC 2024

SCRAM SIX DEPARTURE (RNAV)