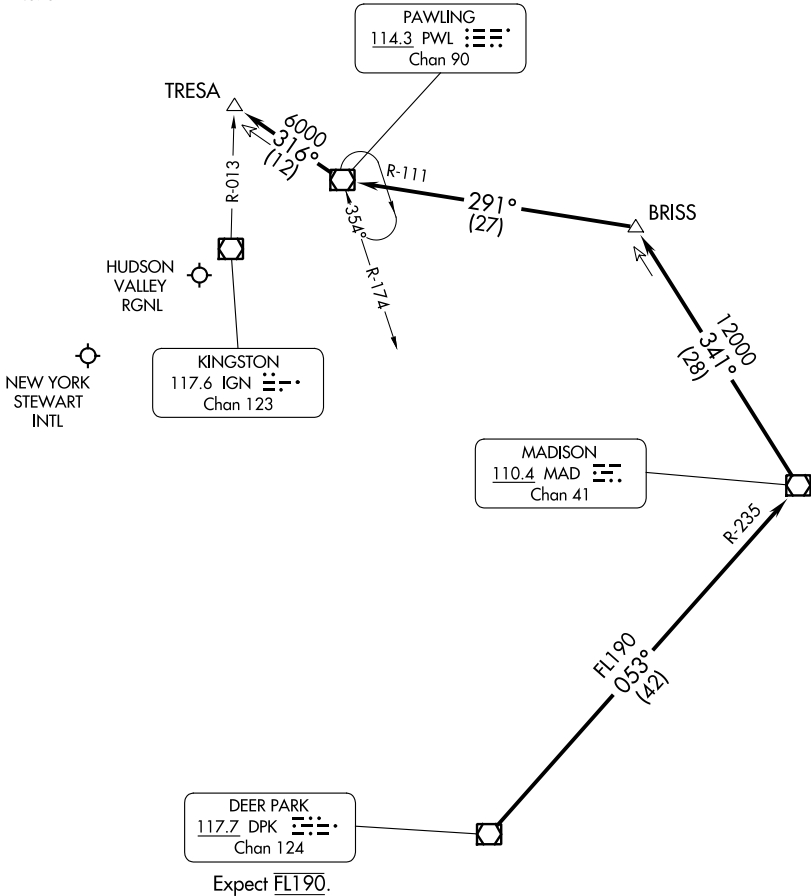


# HUDSON FOUR ARRIVAL

NEW YORK APP CON  
132.75 363.1  
POU ATIS  
126.75  
SWF ATIS  
124.575



NE-2, 28 NOV 2024 to 26 DEC 2024

NE-2, 28 NOV 2024 to 26 DEC 2024

NOTE: RADAR required.

NOTE: Chart not to scale.

### ARRIVAL ROUTE DESCRIPTION

From over DPK VOR/DME on DPK R-053 and MAD R-235 to MAD VOR/DME, then on MAD R-341 to BRISS, then on PWL R-111 to PWL VOR/DME, then on PWL R-316 to TRESA. Expect RADAR vectors to final approach course.

# HUDSON FOUR ARRIVAL