

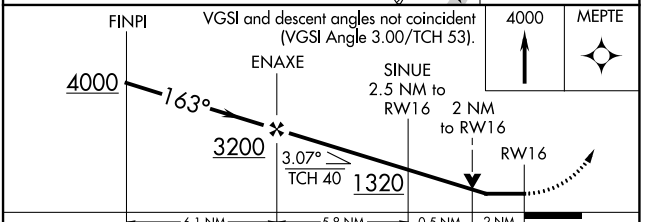
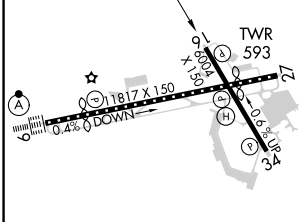
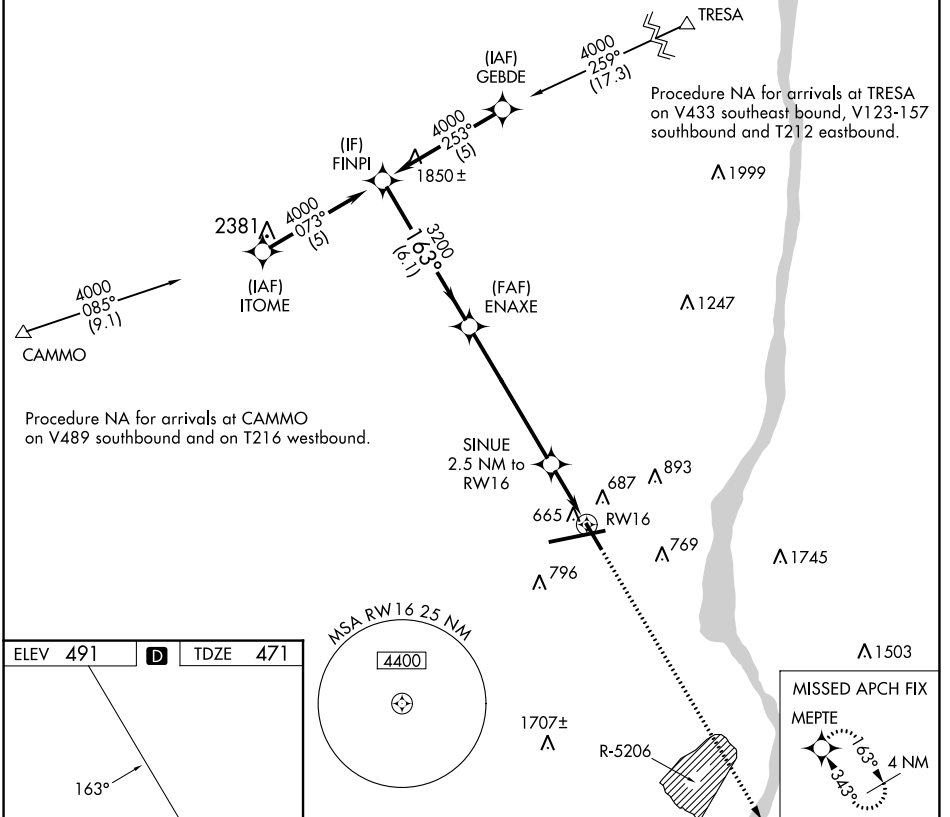
APP CRS	Rwy Idg	6004
163°	TDZE	471
	Apt Elev	491

RNAV (GPS) RWY 16

NEW YORK STEWART INTL (SWF)

RNP APCH-GPS.	MISSED APPROACH: Climb to 4000 direct MEPT E and hold, continue climb-in-hold to 4000.
<p>▼ Rwy 16 helicopter visibility reduction below 3/4 SM AN.</p> <p>▲ Procedure NA when restricted area R-5206 is active.</p>	

ATIS 124.575	NEW YORK APP CON 132.75 363.1	STEWART TOWER 121.0 254.4	GND CON 121.9
------------------------	---	-------------------------------------	-------------------------



CATEGORY	A	B	C	D
LNAV MDA	1140-1	669 (700-1)	1140-1 7/8	669 (700-1 7/8)
C CIRCLING	1200-1	709 (800-1)	1200-2 709 (800-2)	1200-2 1/4 709 (800-2 1/4)

TDZ/CL Rwy 9
HIRL Rws 9-27 and 16-34
REIL Rws 16, 27 and 34

NE-2, 28 NOV 2024 to 26 DEC 2024

NE-2, 28 NOV 2024 to 26 DEC 2024