

# HI-TACAN Z RWY 32

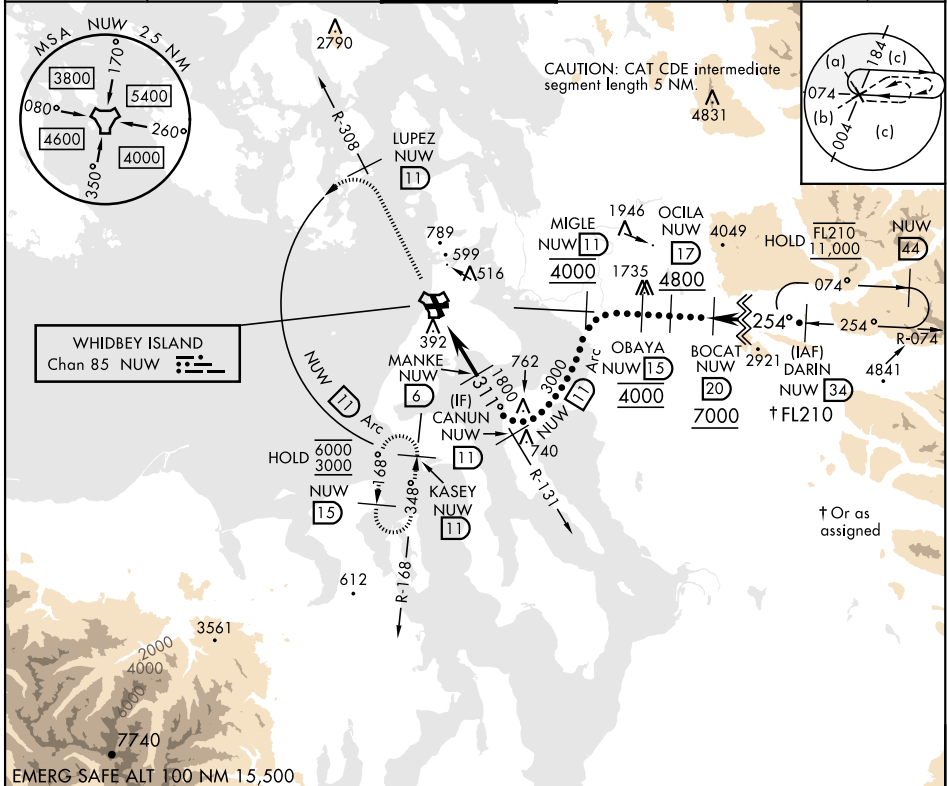
TACAN Chan <b>85</b>	APCH CRS <b>311°</b>	Rwy ldg TDZE Arpt Elev	<b>8000</b> <b>47</b> <b>47</b>
-------------------------	-------------------------	------------------------------	---------------------------------------

[USN]

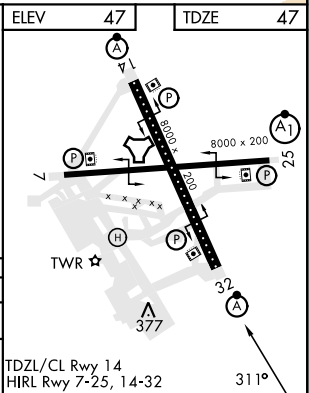
WHIDBEY ISLAND NAS (AULT FLD) (KNUW)

▼ \*When ALS inop, increase CAT CDE vis to 1 3/4 miles.
 ⚠ ALSF-2
 MISSED APPROACH: Climb to 3000 via NUW TACAN R-308 to LUPEZ, then arc W of NUW via 11 DME Arc to KASEY and hold.

ATIS <b>134.15 281.5</b>	WHIDBEY APP CON <b>120.7 270.8 (EAST)</b> <b>118.2 285.65 (WEST)</b>	WHIDBEY TOWER <b>127.9 340.2</b>	GND CON <b>121.75 336.4</b>	CLNC DEL <b>135.1 379.9</b>	ASR/PAR
-----------------------------	--	-------------------------------------	--------------------------------	--------------------------------	---------



3000 ↑ NUW R-308	LUPEZ NUW 11	NUW Arc 11	
NUW TACAN	NUW NAVOE 1.8	NUW 2.8	
4.2 NM		MANKE NUW 6	
3.20° TCH 38		3000	
CATEGORY	C	D	E
S-32*	680-1 3/8	633 (700-1%)	
CIRCLING	860-2 1/2 813 (900-2 1/2)	900-2 3/4 853 (900-234)	1200-3 1153 (1200-3)



# HI-TACAN Z RWY 32

NW-1, 28 NOV 2024 to 26 DEC 2024

NW-1, 28 NOV 2024 to 26 DEC 2024