

OAK HARBOR, WASHINGTON

TACAN Y RWY 7

TACAN Chan 85	APCH CRS 058°	Rwy ldg TDZE 25 Arprt Elev 47
-------------------------	-------------------------	---------------------------------------------------

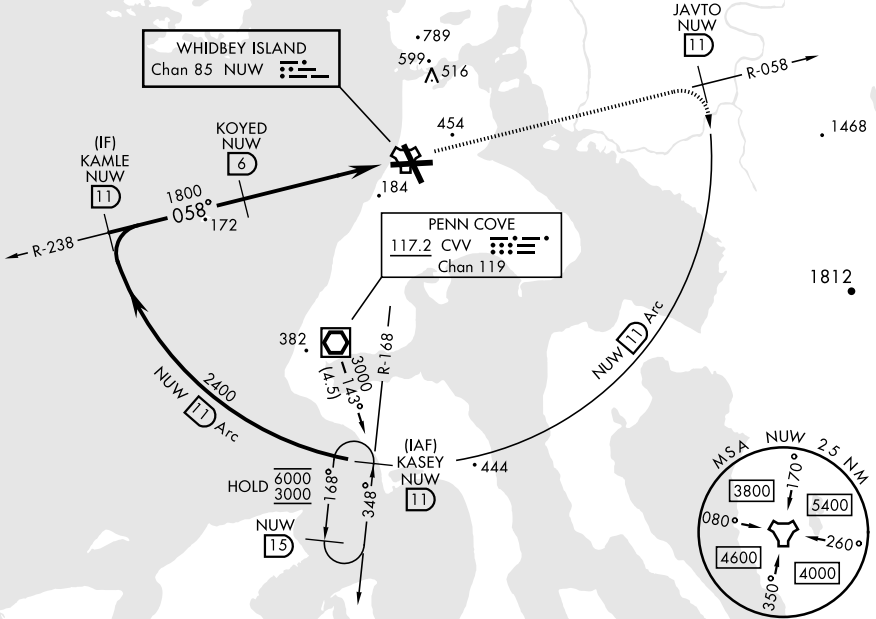
[USN]

WHIDBEY ISLAND NAS (AULT FLD) (KNUW)

▼ MISSED APPROACH: Climb to 3000 via NUW TACAN R-058 to JAVTO, then arc SE of NUW via 11 DME Arc to KASEY and hold.

ATIS 134.15 281.5	WHIDBEY APP CON 120.7 270.8 (E) 118.2 285.65 (W)	WHIDBEY TOWER 127.9 340.2	GND CON 121.75 336.4	CLNC DEL 135.1 379.9	ASR/PAR
-----------------------------	----------------------------------------------------------------------	-------------------------------------	--------------------------------	--------------------------------	---------

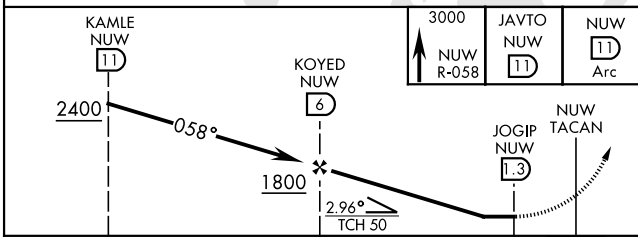
CAUTION: CAT CDE intmed seg length 5 NM



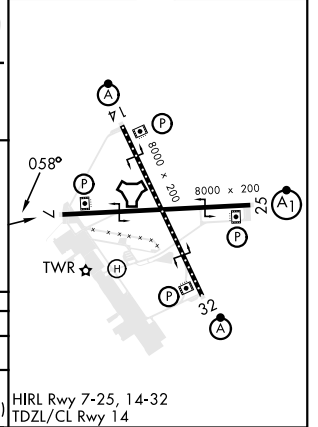
NW-1, 28 NOV 2024 to 26 DEC 2024

NW-1, 28 NOV 2024 to 26 DEC 2024

EMERG SAFE ALT 100 NM 15,500



ELEV	47	TDZE	25
------	----	------	----



CATEGORY	A	B	C	D	E
S-7	440/55	415 (400-1)	440/60	415 (400-1½)	
CIRCLING	760-1	713 (800-1)	860-2½ 813 (900-2½)	900-2¾ 853 (900-2¾)	1200-3 1153 (1200-3)

HIRL Rwy 7-25, 14-32
TDZL/CL Rwy 14

OAK HARBOR, WASHINGTON

48°21'N-122°39'W

WHIDBEY ISLAND NAS (AULT FLD) (KNUW)

Amdt 4 31OCT24

TACAN Y RWY 7