

# TACAN RWY 19R

TACAN IAB Chan <b>112</b>	APCH CRS <b>186°</b>	Rwy Idg <b>12,000</b> TDZE <b>1372</b> Arprt Elev <b>1372</b>
------------------------------	-------------------------	---------------------------------------------------------------------

[USAF]

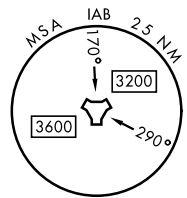
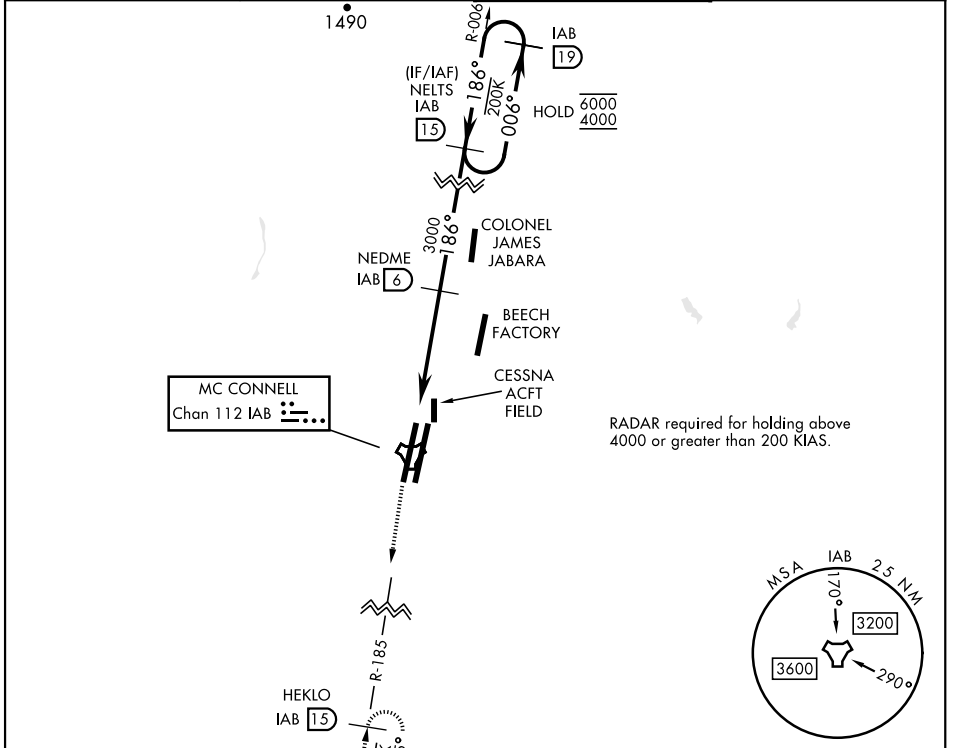
MC CONNELL AFB (KIAB)

▼ \* When ALS inop, increase CAT AB RVR to 55 and vis to 1 mile, CAT CDE vis to 1 3/8 miles.  
 \*\* Circling not authorized W of Rwy 1L-19R.

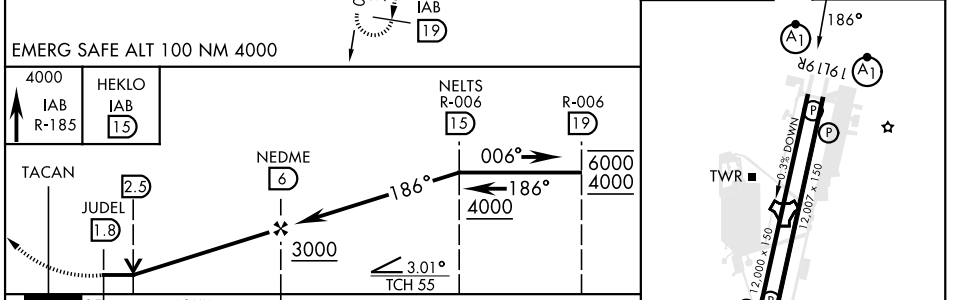


MISSED APPROACH: Climb to 4000 via IAB TACAN R-185 to 15 DME (HEKLO) and hold as published. Expect further clearance from ATC.

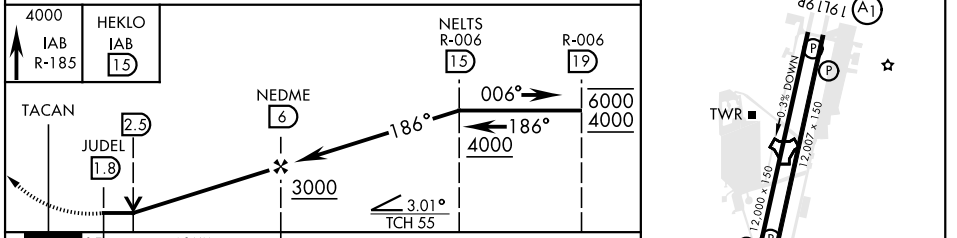
D-ATIS <b>124.65 269.9</b>	WICHITA APP CON <b>134.8 269.1</b>	TOWER <b>127.25 291.775</b>	GND CON <b>118.0 275.8</b>
-------------------------------	---------------------------------------	--------------------------------	-------------------------------



ELEV 1372	TDZE 1372
-----------	-----------



EMERG SAFE ALT 100 NM 4000



CATEGORY	A	B	C	D	E
S-19R*	1880/24	508 (600-1/2)	1880/55	508 (600-1)	
CIRCLING**	1900-1	528 (600-1)	1940-1 1/2 568 (600-1/2)	1940-2 568 (600-2)	2400-3 1028 (600-3)



WICHITA, KANSAS 37°37'N-97°16'W MC CONNELL AFB (KIAB)

# TACAN RWY 19R

NC-2, 28 NOV 2024 to 26 DEC 2024

NC-2, 28 NOV 2024 to 26 DEC 2024