

WICHITA FALLS, TEXAS

HI-ILS or LOC/DME Z RWY 33L

SHEPPARD AFB/
WICHITA FALLS MUNI (KSPS)

LOC I-SPS 109.7	APCH CRS 333°	Rwy Idg 33L TDZE 33L Arprt Elev 13,100 1000 1019	33C 10,003 989
---------------------------	-------------------------	--	------------------------------------

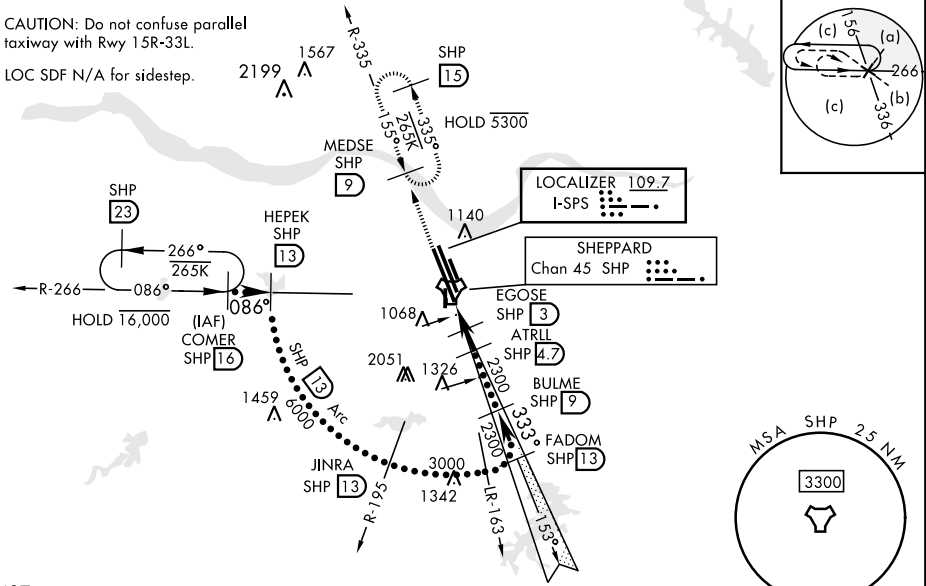
[USAF]

DME required * When ALS inop, increase CAT CDE vis to 3/4 mile. ** When ALS inop, increase CAT CDE vis to 1 mile. *** Circling not authorized W of Rwy 15R-33L.	Rwy 33L MALSR 	Rwy 33C ALSF-1 	MISSED APPROACH: Climb and maintain 3300, intercept SHP TACAN R-335 to SHP R-335/9 DME (MEDSE) and hold.
--	----------------------	-----------------------	--

ATIS * 132.05 269.9	APP CON 118.2 269.025	TOWER * 119.750 279.525 (CTAF)	GND CON 125.5 289.4	CLNC DEL 121.2 282.225	ASR
-------------------------------	---------------------------------	--	-------------------------------	----------------------------------	-----

CAUTION: Do not confuse parallel taxiway with Rwy 15R-33L.

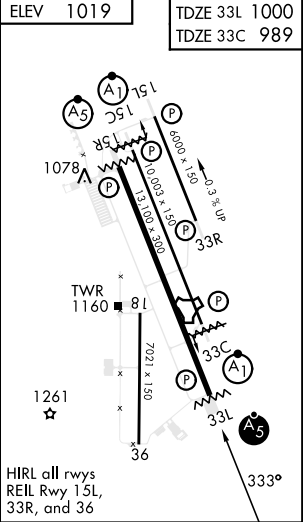
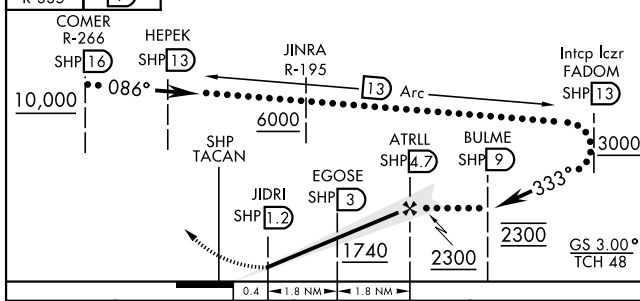
LOC SDF N/A for sidestep.



1407
EMERG SAFE ALT 100 NM 4600

3300 Intcp SHP R-335	MEDSE SHP R-335	EGOSE SHP 3	ELEV 1019	TDZE 33L 1000	TDZE 33C 989
----------------------	-----------------	-------------	-----------	---------------	--------------

VGSI and ILS glidepath not coincident (VGSI Angle 3.00/TCH 56).



CATEGORY	C	D	E
S-ILS 33L *	1200-1/2	200 (200-1/2)	
S-LOC 33L **	1340-1/2	340 (400-1/2)	
SIDESTEP ** 33C	1440-7/8	451 (500-7/8)	
*** CIRCLING	1480-1 1/2 461 (500-1 1/2)	2020-3 1001 (1100-3)	2080-3 1061 (1100-3)

HIRL all rwy's
REL Rwy 15L,
33R, and 36

WICHITA FALLS, TEXAS

33°59'N-98°30'W

SHEPPARD AFB/WICHITA FALLS MUNI (KSPS)

Amdt 8 14JUL22

HI-ILS or LOC/DME Z RWY 33L

SC-2, 28 NOV 2024 TO 26 DEC 2024

SC-2, 28 NOV 2024 TO 26 DEC 2024