

WICHITA FALLS, TEXAS

# ILS or LOC/DME Y RWY 33L

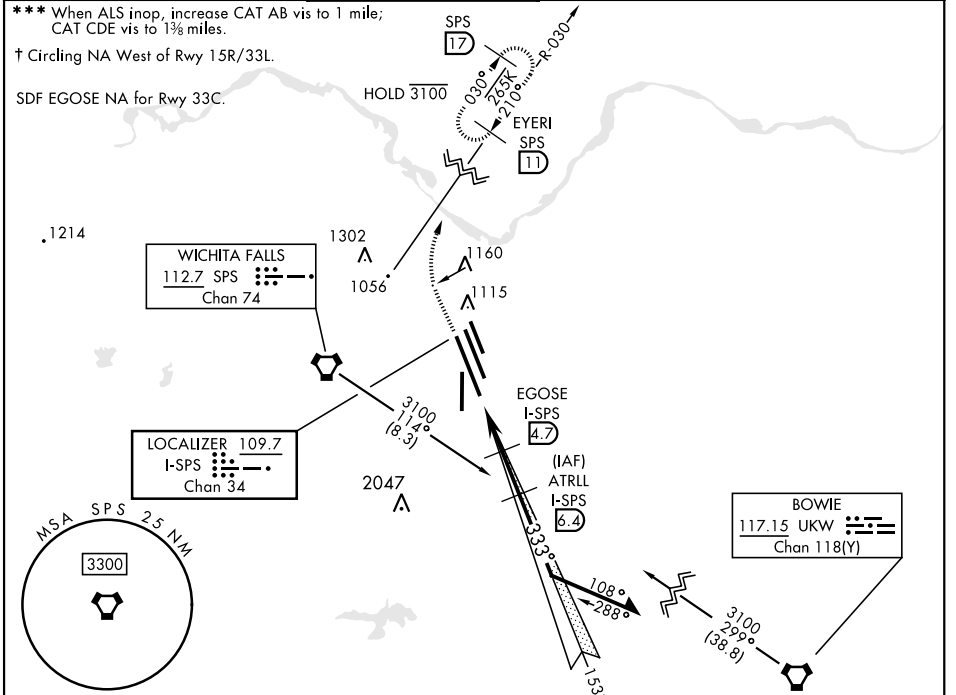
LOC/DME I-SPS <b>109.7</b> Chan <b>34</b>	APCH CRS <b>333°</b>	Rwy ldg 33L <b>13.100</b> 33C <b>10.003</b> TDZE 33L <b>1000</b> 33C <b>989</b> Arprt Elev <b>1019</b>
---	-------------------------	--

[USAF]

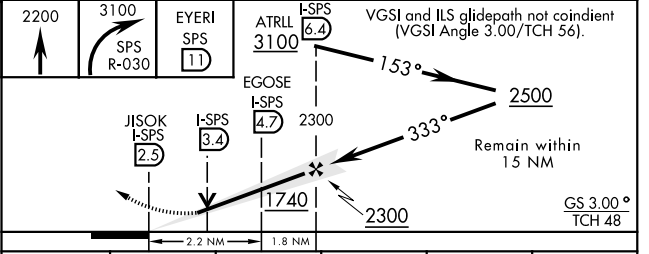
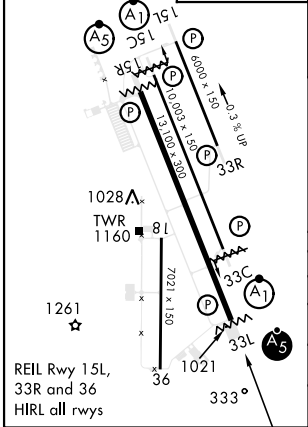
SHEPPARD AFB/  
WICHITA FALLS MUNI (KSPS)

▼ <b>* When ALS inop, increase vis to ¾ mile.</b> <b>** When ALS inop, increase vis to 1 mile.</b>	MALSR <b>A5</b>	ALSF-1 <b>A1</b>	MISSED APPROACH: Climb to 2200, then climbing right turn to 3100 via SPS VORTAC R-030 to EYERI (SPS R-030/11) and hold.		
---	--------------------	---------------------	---	--	--

ATIS ★ <b>132.05 269.9</b>	APP CON <b>118.2 269.025</b>	TOWER ★ <b>119.75 279.525 (CTAF)</b>	GND CON <b>125.5 289.4</b>	CLNC DEL <b>121.2 282.225</b>	ASR
-------------------------------	---------------------------------	---	-------------------------------	----------------------------------	-----



ELEV <b>1019</b>	TDZE 33L <b>1000</b> TDZE 33C <b>989</b>
------------------	---



CATEGORY	A	B	C	D	E
S-ILS 33L *	1200-½ 200 (200-½)				
S-LOC/ ** DME 33L	1340-½ 340 (400-½)				
SIDESTEP 33C ***	1440-½ 451 (500-½)	1440-7/8 451 (500-7/8)			
◻ CIRCLING†	1440-1 421 (500-1)	1480-1 461 (500-1)	1480-1½ 461 (500-1½)	2020-3 1001(1100-3)	2080-3 1061(1100-3)

WICHITA FALLS, TEXAS 33°59'N-98°30'W  
Amdt 7 14JUL22

SHEPPARD AFB/WICHITA FALLS MUNI (KSPS)

# ILS or LOC/DME Y RWY 33L

SC-2, 28 NOV 2024 to 26 DEC 2024

SC-2, 28 NOV 2024 to 26 DEC 2024