

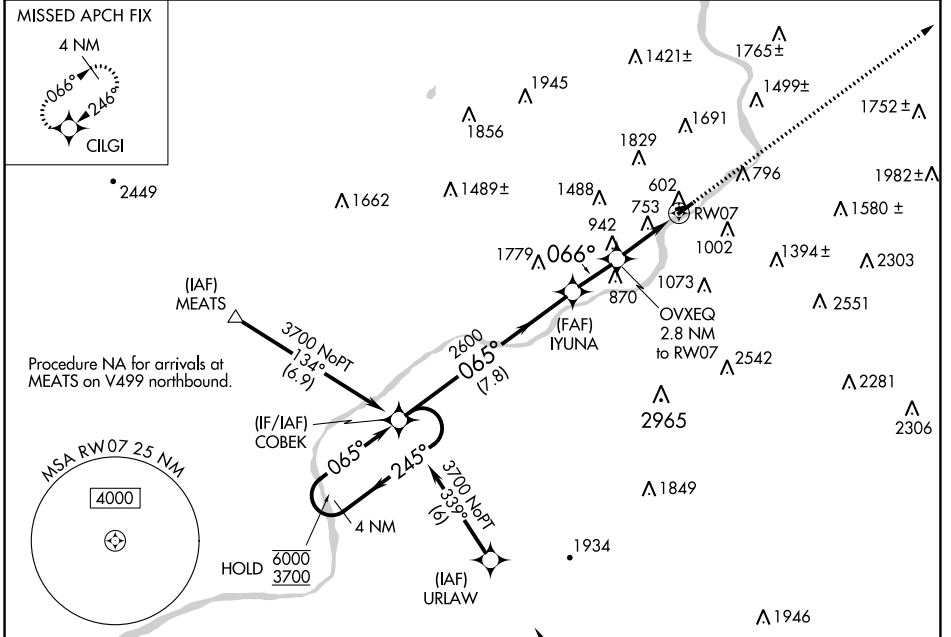
WAAS CH <b>86624</b> <b>W07A</b>	APP CRS <b>066°</b>	Rwy Idg TDZE <b>544</b> Apt Elev <b>544</b>	<b>3375</b> <b>544</b> <b>544</b>
--	------------------------	---	---

# RNAV (GPS) RWY 7

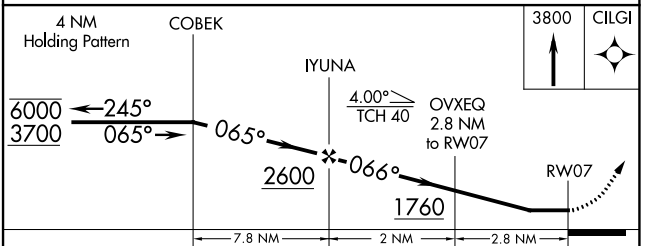
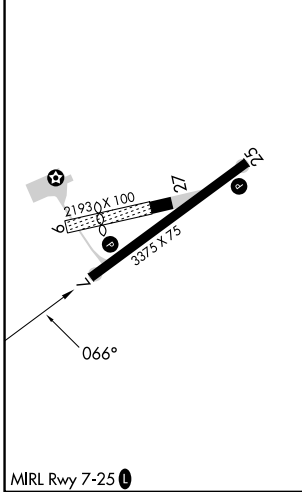
WILKES-BARRE WYOMING VALLEY (WBW)

RNP APCH - GPS.	Rwy 7 helicopter visibility reduction below 3/4 SM NA. Circling NA to Rwys 9 and 27. Use AVP altimeter setting. Circling NA northwest of Rwy 7-25.	MISSED APPROACH: Climb to 3800 direct CILGI and hold, continue climb-in-hold to 3800.
-----------------	--	---

AVP ASOS <b>135.75</b>	WILKES-BARRE APP CON <b>126.3 256.7</b>	UNICOM <b>122.8 (CTAF)</b>
---------------------------	--	-------------------------------



ELEV 544	TDZE 544
----------	----------



CATEGORY	A	B	C	D
LP MDA	1160-1	616 (700-1)		NA
LNAV MDA	1300-1 756 (800-1)	1300-1¼ 756 (800-1¼)		NA
CIRCLING	1320-1 776 (800-1)	1380-1¼ 836 (900-1¼)		NA

NE-4, 28 NOV 2024 to 26 DEC 2024

NE-4, 28 NOV 2024 to 26 DEC 2024