

WAAS CH <b>49015</b> <b>W09A</b>	APP CRS <b>088°</b>	Rwy Idg <b>7000</b> TDZE <b>80</b> Apt Elev <b>80</b>
--	------------------------	---

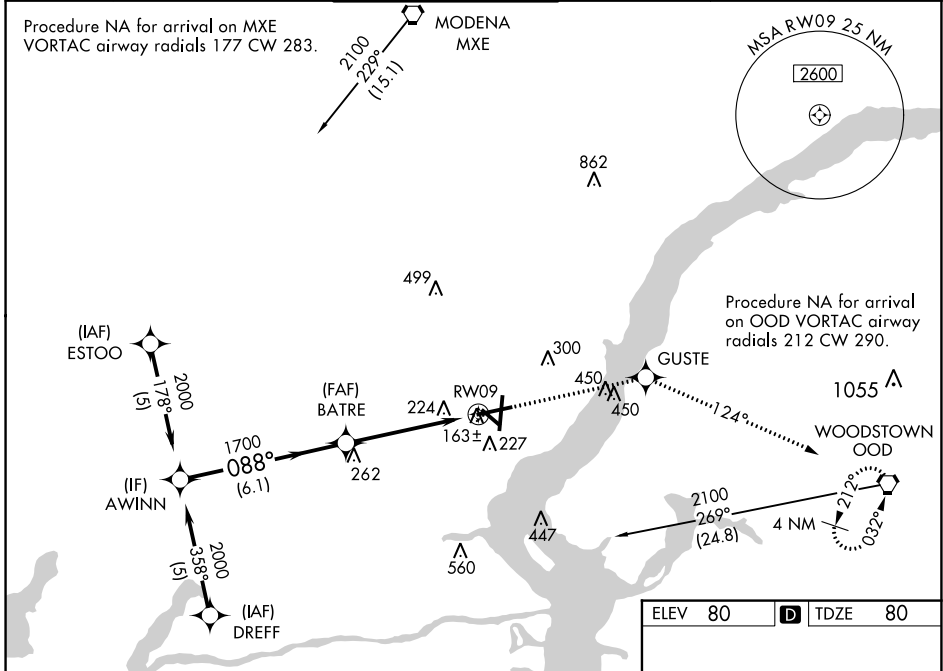
# RNAV (GPS) RWY 9

NEW CASTLE (ILG)

**⚠** For uncompensated Baro-VNAV systems, LNAV/VNAV NA below -15°C (5°F) or above 48°C (118°F). DME/DME RNP-0.3 NA. Helicopter visibility reduction below 3/4 mile NA. VDP and Baro-VNAV NA when using Philadelphia Intl altimeter setting. When local altimeter setting not received, use Philadelphia Intl altimeter setting: increase LPV DA to 448, LNAV/VNAV DA to 568, and all MDAs 60 feet; increase LPV all Cats and Circling Cat D visibility 1/4 SM and LNAV/VNAV all Cats visibility 1/2 SM.

**MSA APPROACH:**  
Climb to 2100 direct GUSTE and via track 124° to OOD VORTAC and hold.

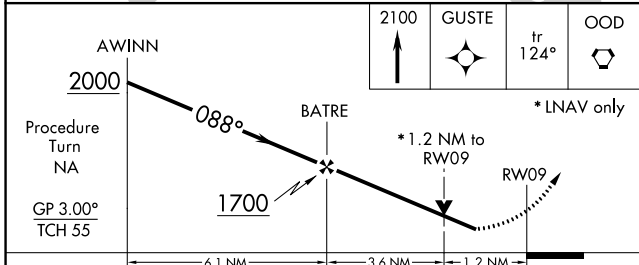
ATIS <b>123.95</b>	PHILADELPHIA APP CON <b>118.35 323.1</b>	WILMINGTON TOWER ★ <b>126.0</b> (CTAF) <b>352.05</b>	GND CON <b>121.7 275.8</b>	CLNC DEL <b>119.95</b>	UNICOM <b>122.95</b>
-----------------------	---	---	-------------------------------	---------------------------	-------------------------



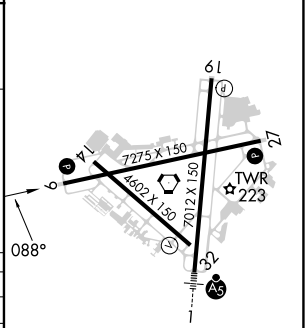
NE-3, 28 NOV 2024 to 26 DEC 2024

NE-3, 28 NOV 2024 to 26 DEC 2024

ELEV 80	<b>D</b> TDZE 80
---------	------------------



CATEGORY	A	B	C	D
LPV DA	394-1 314 (400-1)			
LNAV/ VNAV	521-1½ 441 (500-1½)			
LNAV MDA	520-1 440 (500-1)	520-1¼ 440 (500-1¼)		520-1½ 440 (500-1½)
CIRCLING	540-1 460 (500-1)	560-1 480 (500-1)	600-1½ 520 (600-1½)	800-2¼ 720 (800-2¼)



REIL Rwy 9, 19 and 27  
HIRL Rwy 1-19 and 9-27  
MIRL Rwy 14-32