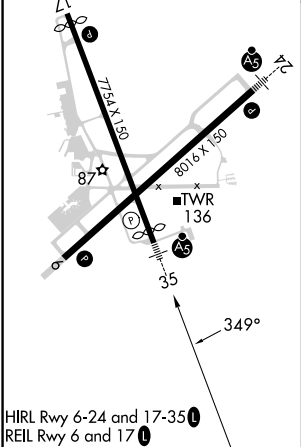
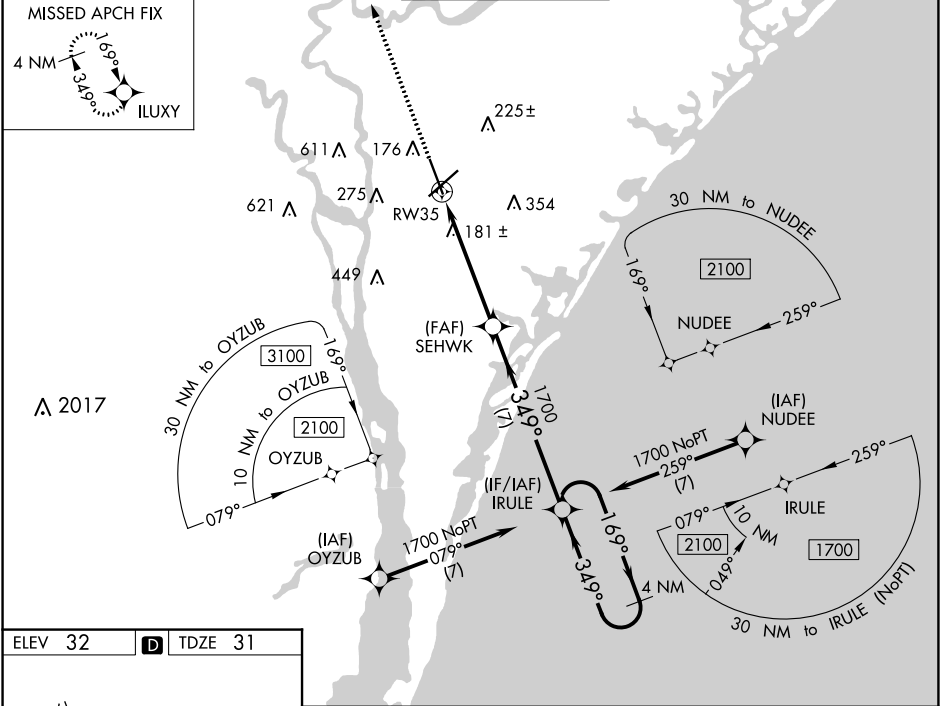


WAAS CH <b>50499</b> <b>W35A</b>	APP CRS <b>349°</b>	Rwy Idg <b>7204</b> TDZE <b>31</b> Apt Elev <b>32</b>
----------------------------------------	------------------------	-------------------------------------------------------------

# RNAV (GPS) RWY 35

WILMINGTON INTL (ILM)

<p><b>⚠</b> For uncompensated Baro-VNAV systems, LNAV/VNAV NA below -7°C (20°F) or above 54°C (130°F). DME/DME RNP-0.3 NA. For inop ALS, increase LNAV Cats C/D visibility to 1½ SM.</p>	<p>MALSR</p>	<p>MISSED APPROACH: Climb to 3000 direct ILUXY and hold.</p>		
<p>ATIS <b>124.975</b></p>	<p>WILMINGTON APP CON ★ <b>118.25 284.65</b> (164°-343°) <b>135.75 317.425</b> (344°-163°)</p>	<p>WILMINGTON TOWER ★ <b>119.9</b>(CTAF) <b>0 239.3</b></p>	<p>GND CON <b>121.9 348.6</b></p>	<p>UNICOM <b>122.95</b></p>



3000 ILUXY	SEHWK 1700	IRULE	4 NM Holding Pattern	
*LNAV only.	*1.4 NM to RW35	1700	1700	
RW35	1.4 NM	3.8 NM	7 NM	
1700	349°	169°	1700	
		349°	GP 3.00° TCH 37	
CATEGORY	A	B	C	D
LPV DA	242/24		211 (300-½)	
LNAV/VNAV DA	426/45		395 (400-¾)	
LNAV MDA	500/24	469 (500-½)		500/50 469 (500-1)
CIRCLING	560-1	528 (600-1)		720-2 920-3 688 (700-2) 888 (900-3)

SE-2, 28 NOV 2024 to 26 DEC 2024

SE-2, 28 NOV 2024 to 26 DEC 2024