

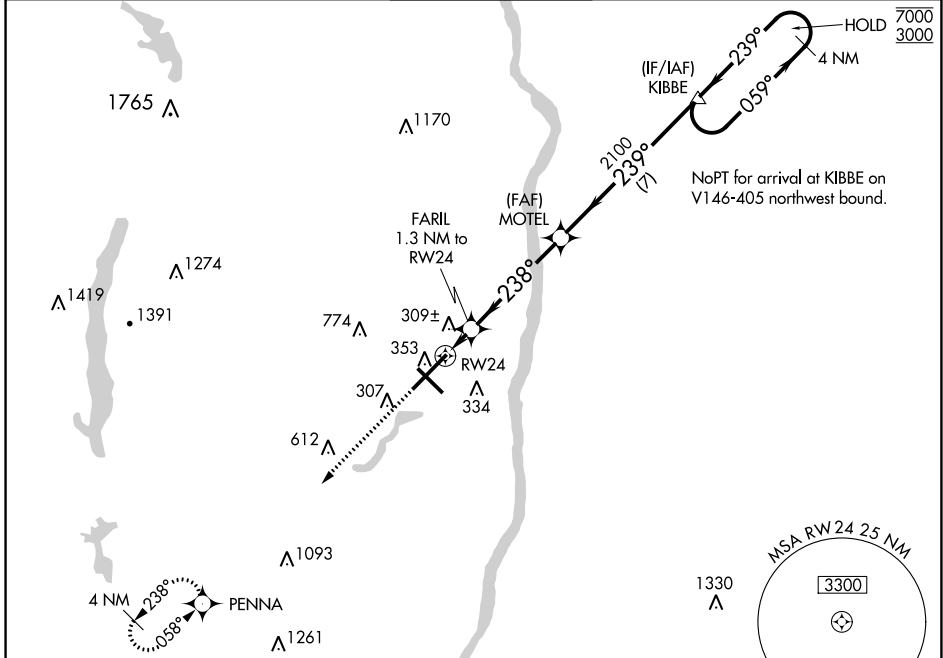
WAAS CH 97310 W24A	APP CRS 238°	Rwy Idg TDZE 170 Apt Elev 173	9509
--	------------------------	---	-------------

RNAV (GPS) Y RWY 24

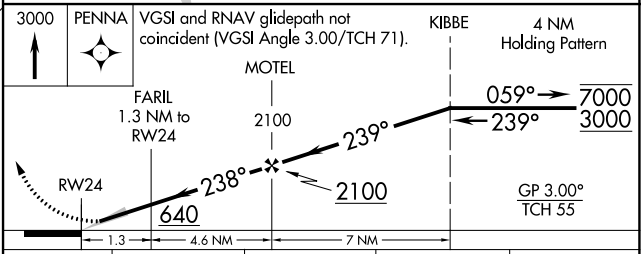
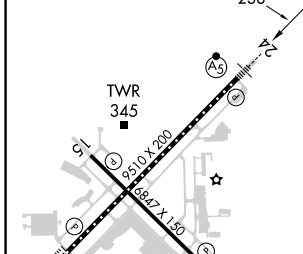
BRADLEY INTL (BDL)

RNP APCH-GPS. ▲ For uncompensated Baro-VNAV systems, LNAV/VNAV NA below -18°C or above 54°C.	MALSRR AS	MISSED APPROACH: Climb to 3000 direct PENNA and hold.
---	--------------	--

D-ATIS 118.15	BRADLEY APP CON 123.95 290.55 (061°-240°) 125.35 281.5 (241°-060°)	BRADLEY TOWER 120.3 351.8	GND CON 121.9 348.6	CLNC DEL 121.75 322.3	CPDLC
-------------------------	--	-------------------------------------	-------------------------------	---------------------------------	-------



ELEV 173	D	TDZE 170
----------	----------	----------



CATEGORY	A	B	C	D
LPV DA	370/18		200 (200-½)	
LNAV/VNAV DA	560/45		390 (400-¾)	
LNAV MDA	560/24 390 (400-½)		560/35 390 (400-¾)	
C CIRCLING	700-1 527 (600-1)		1120-2¾ 947 (1000-2¾) 1220-3 1047 (1100-3)	

HIRL Rwy 6-24 and 15-33
REIL Rwy 6 and 15
TDZ/CL Rwy 6 and 24

NE-1, 28 NOV 2024 to 26 DEC 2024

NE-1, 28 NOV 2024 to 26 DEC 2024