

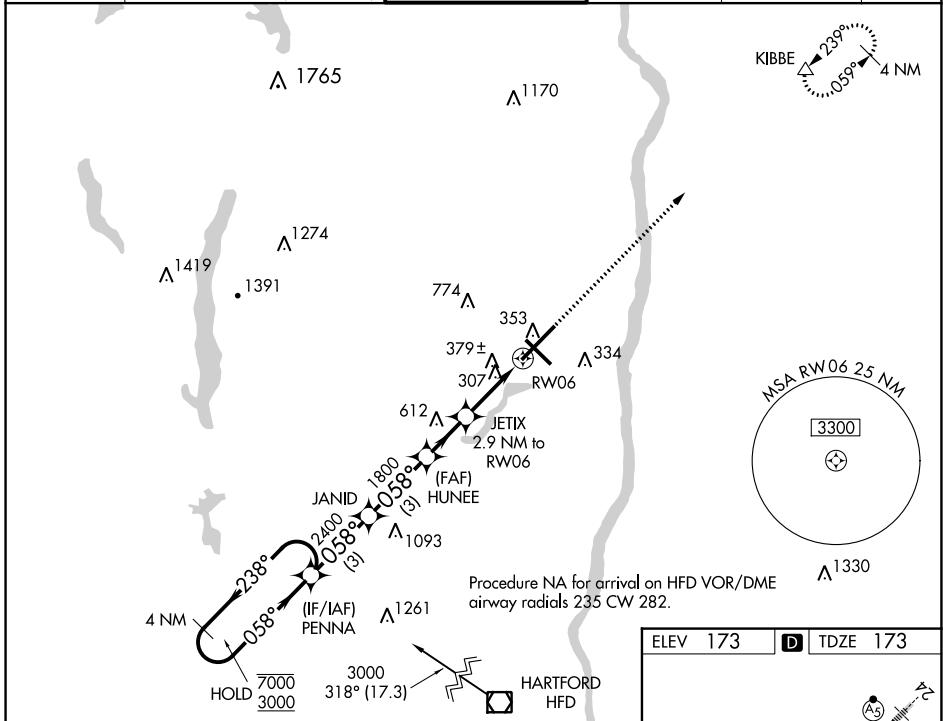
WAAS CH <b>70328</b> <b>W06A</b>	APP CRS <b>058°</b>	Rwy Idg TDZE Apt Elev	<b>9509</b> <b>173</b> <b>173</b>
--	------------------------	-----------------------------	---

# RNAV (GPS) Y RWY 6

BRADLEY INTL (BDL)

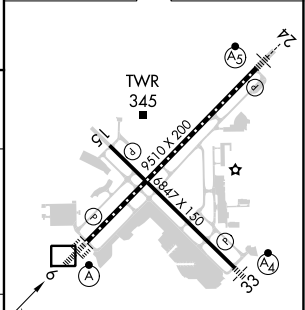
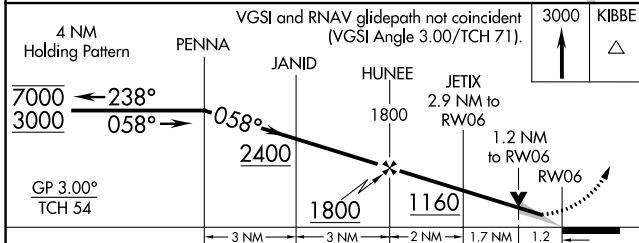
RNP APCH - GPS.		ALSIF-2	MISSED APPROACH: Climb to 3000 direct KIBBE and hold.
For uncompensated Baro-VNAV systems, LNAV/VNAV NA below -17°C or above 54°C.			

D-ATIS <b>118.15</b>	BRADLEY APP CON <b>123.95 290.55</b> (061°-240°) <b>125.35 281.5</b> (241°-060°)	BRADLEY TOWER <b>120.3 351.8</b>	GND CON <b>121.9 348.6</b>	CLNC DEL <b>121.75 322.3</b>	CPDLC
-------------------------	--	-------------------------------------	-------------------------------	---------------------------------	-------



Procedure NA for arrival on HFD VOR/DME  
airway radials 235 CW 282.

ELEV 173	<b>D</b> TDZE 173
----------	-------------------



CATEGORY	A	B	C	D
LPV DA	373/18 200 (300-½)			
LNAV/VNAV DA	640/50 467 (500-1)			
LNAV MDA	640/24 467 (500-½)		640/50 467 (500-1)	
<b>C</b> CIRCLING	700-1 527 (600-1)		1120-2¾ 947 (1000-2¾) 1220-3 1047 (1100-3)	

HIRL Rwy 6-24 and 15-33  
REIL Rwy 6 and 15  
TDZ/CL Rwy 6 and 24

NE-1, 28 NOV 2024 to 26 DEC 2024

NE-1, 28 NOV 2024 to 26 DEC 2024