


LOC I-INT <b>110.3</b>	APP CRS <b>332°</b>	Rwy Idg 6655
		TDZE 941
		Apt Elev 969

# ILS or LOC RWY 33

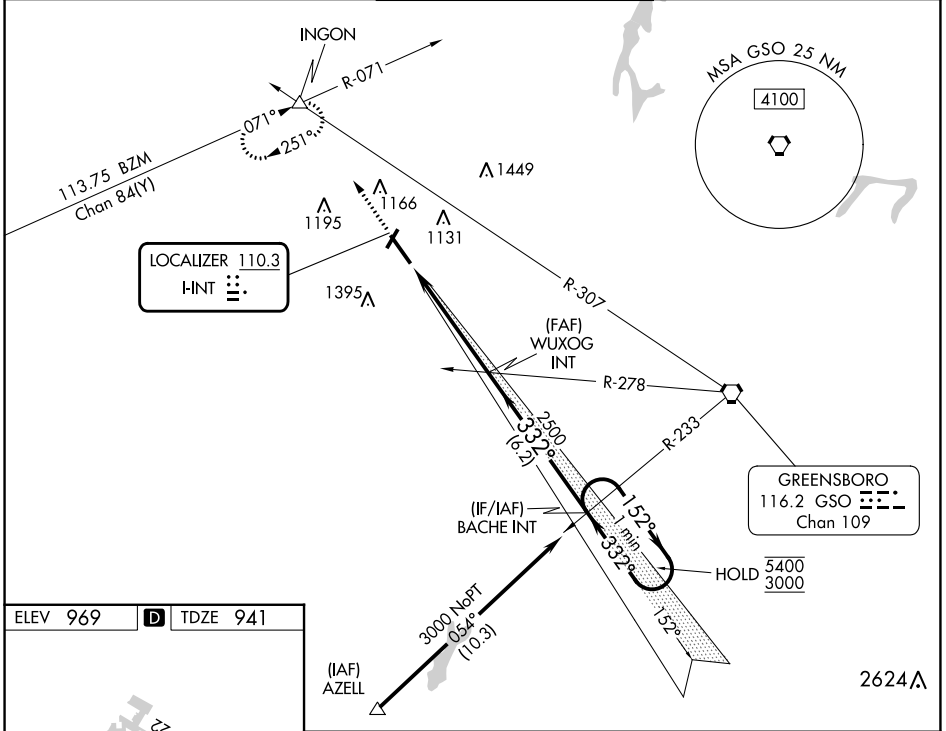
SMITH REYNOLDS (INT)

RNP APCH-GPS, From AZELL.  
 RADAR required for non-GPS equipped aircraft.

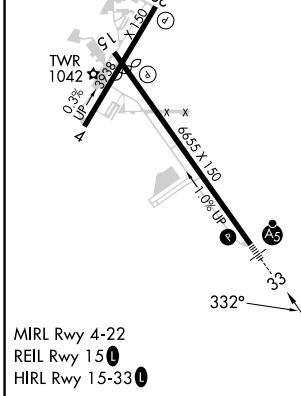
**⚠** \*RVR 1800 authorized with use of FD or AP or HUD to DA.

MALSR  MISSED APPROACH: Climb to 1400 then climbing right turn to 3500 on heading 341° and GSO VORTAC R-307 to INCON INT and hold, continue climb-in-hold to 3500.

ATIS <b>121.3</b>	GREENSBORO APP CON <b>124.35 269.225</b>	WINSTON-SALEM TOWER ★ <b>123.75 (CTAF) 0 257.8</b>	GND CON <b>128.25</b>	UNICOM <b>122.95</b>
----------------------	---	---	--------------------------	-------------------------



ELEV 969	<b>D</b>	TDZE 941
----------	----------	----------



1400	3500	INGON	One Minute Holding Pattern	
↑	hdg 341°	GSO R-307	WUXOG INT	BACHE INT
RW33		2500	2500	5400 3000
4.8 NM		6.2 NM		GS 3.00° TCH 57
CATEGORY	A	B	C	D
S-ILS 33*	1141/24		200 (200-1/2)	
S-LOC 33	1400/24	459 (500-1/2)	1400/45	459 (500-7/8)
CIRCLING	1480-1 511 (600-1)	1580-1 611 (700-1)	1700-2 731 (800-2)	1760-2 1/2 791 (800-2 1/2)

SE-2, 28 NOV 2024 to 26 DEC 2024