

APP CRS	Rwy Idg	7604
094°	TDZE	1099
	Apf Elev	1099

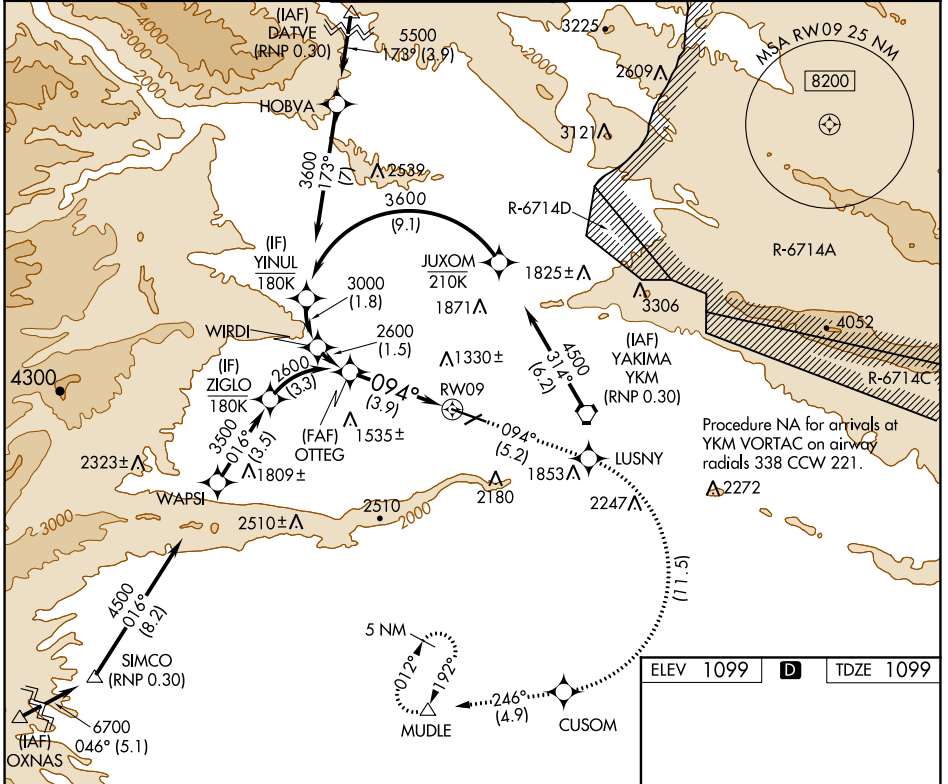
RNAV (RNP) RWY 9

YAKIMA AIR TRML/MCALLISTER FLD (YKM)

RF required. GPS required. For uncompensated Baro-VNAV systems, procedure NA below -17°C (2°F) or above 45°C (113°F). * Missed approach requires a minimum climb of 425 feet per NM to 3000.

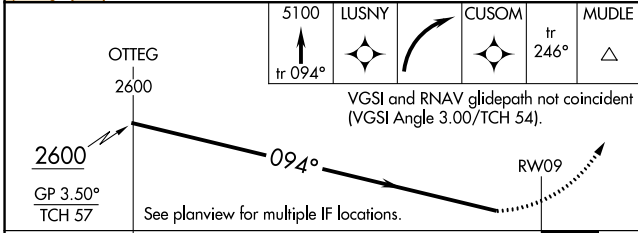
MISSED APPROACH: Climb to 5100 on track 094° to LUSNY right turn to CUSOM and on track 246° to MUDLE and hold.

ATIS 125.25	SPOKANE APP CON* 123.8 263.15	YAKIMA TOWER* 133.25 (CTAF) 0 257.8	GND CON 121.9	CLNC DEL 121.9	UNICOM 122.95
-----------------------	---	---	-------------------------	--------------------------	-------------------------



NW-1, 28 NOV 2024 to 26 DEC 2024

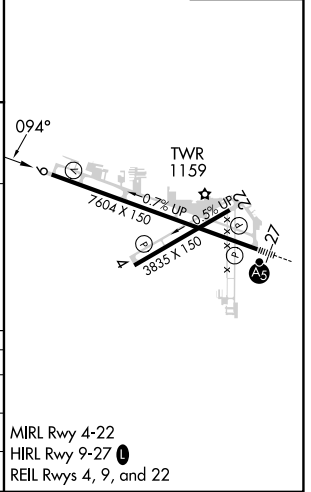
NW-1, 28 NOV 2024 to 26 DEC 2024



ELEV 1099	D	TDZE 1099
-----------	----------	-----------

CATEGORY	A	B	C	D
RNP 0.30 DA*		1473-1 374 (400-1)		NA
RNP 0.30 DA		1934-2½ 835 (900-2½)		NA

AUTHORIZATION REQUIRED



MRL Rwy 4-22
HIRL Rwy 9-27
REIL Rws 4, 9, and 22