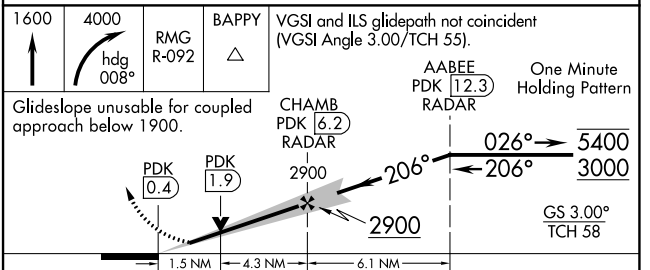
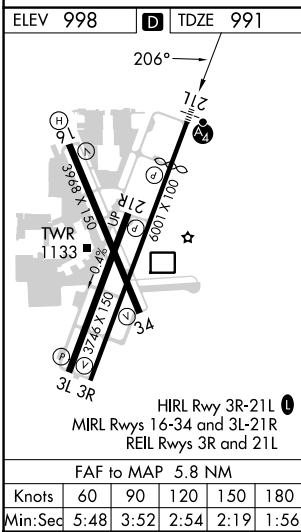
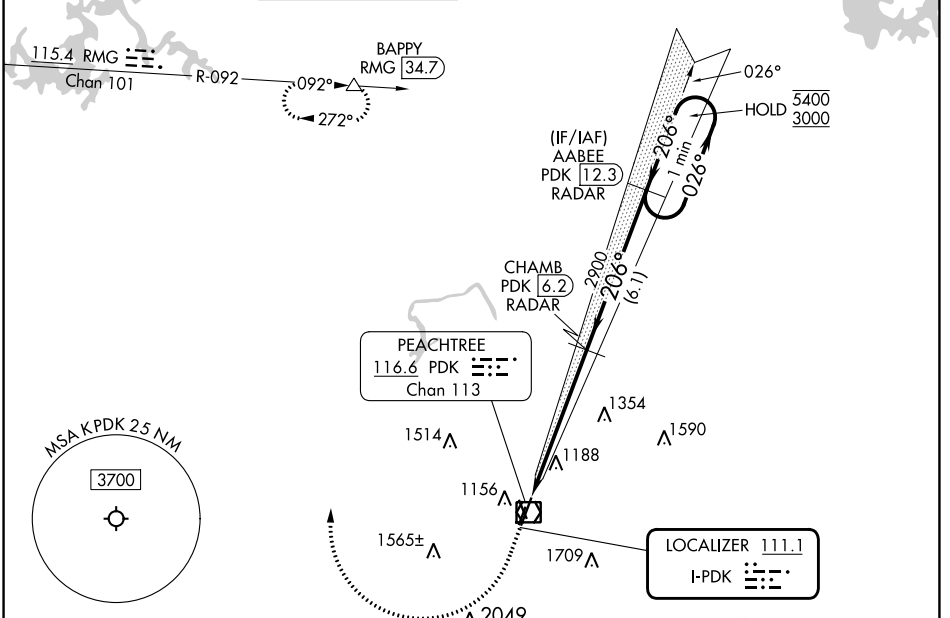


LOC I-PDK 111.1	APP CRS 206°	Rwy Idg TDZE Apt Elev	4996 991 998
---------------------------	------------------------	-----------------------------	---

ILS or LOC RWY 21L

DEKALB-PEACHTREE (PDK)

RADAR required for procedure entry. DME or RADAR required.		MALSF		MISSED APPROACH: Climb to 1600 then climbing right turn to 4000 on heading 008° and RMG VORTAC R-092 to BAPPY/RMG 34.7 DME and hold.			
<p>⚠ Circling Rwy 16, 34 NA at night. DME from PDK VOR/DME. Simultaneous reception of I-PDK and PDK DME required. Rwy 21L helicopter visibility reduction below RVR 4000 NA. For inop ALS, increase S-LOC 21L Cat A/B visibility to RVR 5500.</p>							
ATIS 128.4	ATLANTA APP CON 126.975 239.275	PEACHTREE TOWER ★ 120.9 (CTAF) 281.5	GND CON 121.6	CLNC DEL 125.2	CLNC DEL 120.9 (When twr closed)	UNICOM 122.95	120.0



1600	4000	RMG R-092	BAPPY	VGSI and ILS glidepath not coincident (VGSI Angle 3.00/TCH 55).
↑	hdg 008°			AABEE PDK 12.3 One Minute Holding Pattern
Glide slope unusable for coupled approach below 1900.				
PDK 0.4		PDK 1.9	2900	2900
1.5 NM		4.3 NM	6.1 NM	GS 3.00° TCH 58
CATEGORY	A	B	C	D
S-ILS 21L	1330/40		339 (400-¾)	
S-LOC 21L	1520/40	529 (600-¾)	1520-1¼	529 (600-1¼)
☑ CIRCLING	1520-1 522 (600-1)		1840-2½ 842 (900-2½)	2060-3 1062 (1100-3)

SE-4, 28 NOV 2024 to 26 DEC 2024

SE-4, 28 NOV 2024 to 26 DEC 2024