

PERU, INDIANA

# RNAV (GPS) RWY 5

APCH CRS	Rwy Idg	12,501
046°	TDZE	811
	Arprt Elev	811

(USAF)

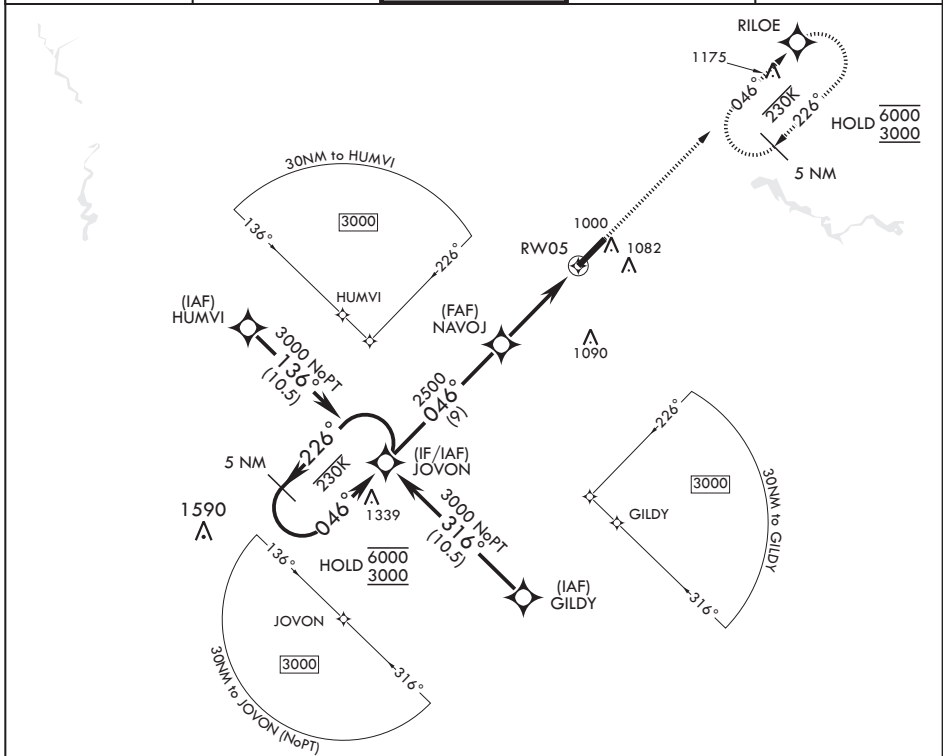
GRISSOM ARB (KGUS)

RNP APCH	ALS-F1	MISSED APPROACH: Climb to 3000 direct RILOE and hold.
----------	--------	---

\* When ALS inop, increase CAT AB RVR to 55 and vis to 1 mile, CAT CDE vis to 1 3/8 miles.



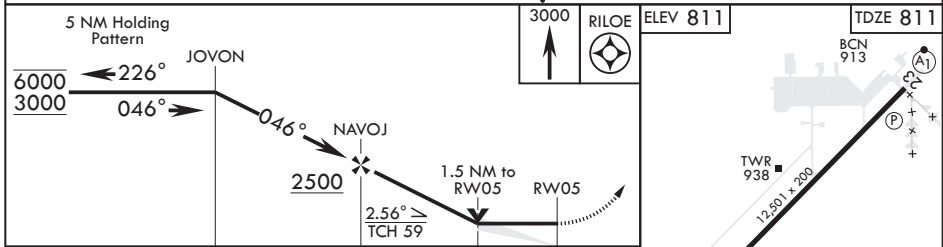
ATIS 108.45 270.8	APP CON/DEP CON 121.05 351.8 E 123.85 291.675 W	TOWER ★ 133.7 290.45	GND CON 128.425 275.8	CLNC DEL 128.425 275.8
----------------------	---	-------------------------	--------------------------	---------------------------



EC-2, 28 NOV 2024 to 26 DEC 2024

EC-2, 28 NOV 2024 to 26 DEC 2024

EMERG SAFE ALT 100 NM 3500



CATEGORY	A	B	C	D	E
RNAV MDA*	1260/24 449 (500-½)		1260/45 449		1260/45 449 (500-¾)
CIRCLING	1340-1 529 (600-1)		1400-1½ 589 (600-1½)	1400-2 589 (600-2)	1440-2¼ 629 (700-2¼)

HIRL all Rwys

PERU, INDIANA

40°39'N - 86°09'W

GRISSOM ARB (KGUS)

Amdt 7 14JUL22

# RNAV (GPS) RWY 5