

CHERRY POINT, NORTH CAROLINA

HI-TACAN Y RWY 32L

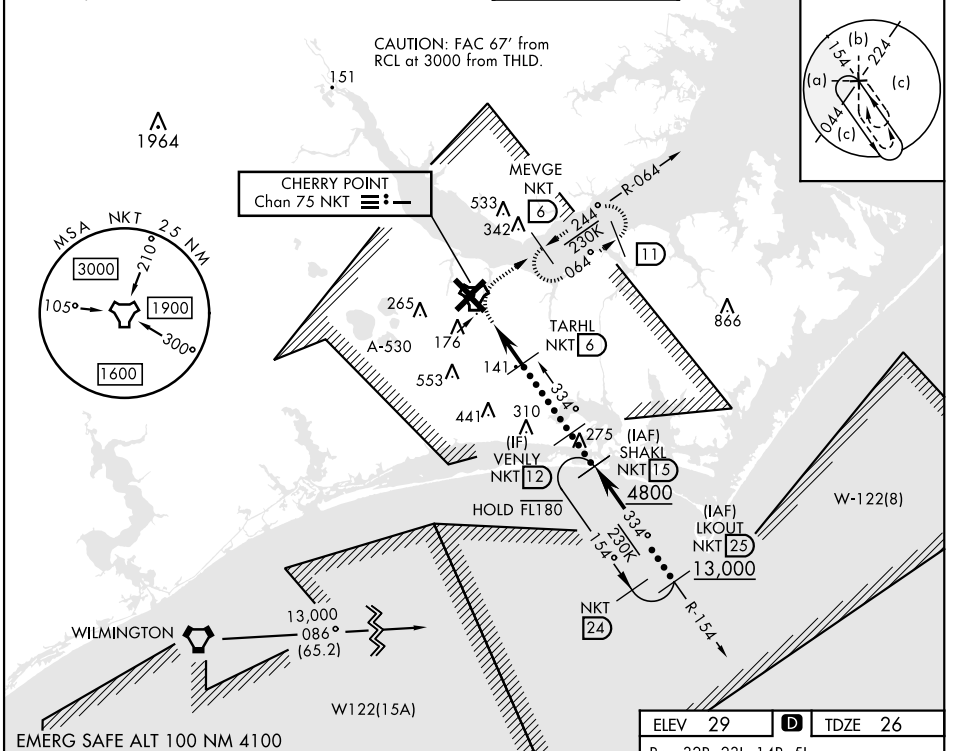
TACAN NKT Chan 75	APCH CRS 334°	Rwy Idg TDZE 7551 Arpt Elev 26 29
--------------------------	----------------------	--

[UN]

CHERRY POINT MCAS (CUNNINGHAM FLD) (KNKT)

<p>▼ * When ALS inop, increase vis to 1 1/2 miles.</p>	<p>ALSF-1 A1</p>	<p>MISSED APPROACH: Climbing right turn to 1600, intercept NKT R-064 to MEVGE and hold.</p>
--	----------------------	---

<p>ATIS 127.475 244.875</p>	<p>(E) 119.75 (E) 132.575 (W) 119.35</p>	<p>APP CON 360.775 (abv 2600') 299.6 (at/blw 2600') 377.175 (N) 124.1 268.7</p>	<p>TOWER 121.3 340.2</p>	<p>GND CON 128.625 239.025</p>	<p>CLNC DEL 125.95 316.125</p>	<p>ASR/PAR</p>
---	---	--	--	--	--	----------------

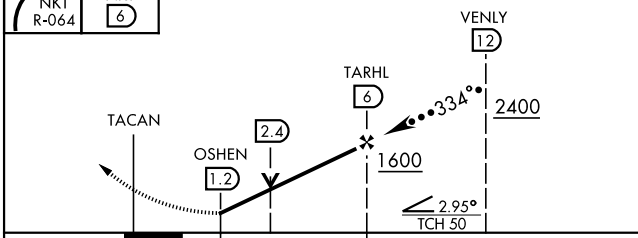


EMERG SAFE ALT 100 NM 4100

1600 NKT R-064

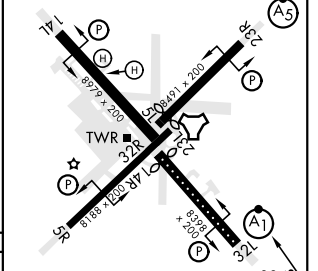
MEVGE NKT 6

VGSI and descent angle not coincident. (VGSI Angle 3.00/TCH 78)



ELEV 29	TDZE 26
----------------	----------------

Rwy 32R, 23L, 14R, 5L marked in center mat area.



CATEGORY	C	D	E
S-32L*	460-3/4	435 (500-3/4)	
CIRCLING	580-1 1/2	580-2	700-2 1/2
	551 (600-1 1/2)	551 (600-2)	671 (700-2 1/2)

HRL all rwys
REIL Rwy 5L and 14R
Rwy 5L-23R Idg 7552'
Rwy 14R-32L Idg 7551'

CHERRY POINT, NORTH CAROLINA 34° 54' N-76° 53' W CHERRY POINT MCAS (CUNNINGHAM FLD) (KNKT)

Amtd 5 02NOV23

HI-TACAN Y RWY 32L

SE-2, 28 NOV 2024 to 26 DEC 2024

SE-2, 28 NOV 2024 to 26 DEC 2024